

1. PORT AVENTURA ENTERTAINMENT, SA UNIPERSONAL.....	3
1.1 MOST DATA INFORMATION ABOUT THE PORTAVENTURA WORLD RESORT.....	4
1.2 PORTAVENTURA PARK: THEMATIC AREAS PORTAVENTURA PARK (PAP)	5
1.3 CARIBBEAN PORTAVENTURA AQUATIC PARK (CAP)	6
1.4 FERRARI LAND (FL)	7
1.3 OUR HOTELS	8
1.4 CONVENTION CENTRE (CDC)	10
1.5 PORTAVENTURA DREAMS VILLAGE (PADV)	11
2. FROM THE BEGINNING, COMMITTED TO THE ENVIRONMENT.....	12
2.1 TIMELINE.....	13
2.2 ENVIRONMENTAL COMMITMENTS	15
3. ENVIRONMENTAL POLICY	17
4. ENVIRONMENTAL MANAGEMENT SYSTEM	19
4.1 SCOPE OF THE MANAGEMENT SYSTEM.....	20
4.2 ORGANISATION.....	20
4.3 RESPONSIBILITY AND AUTHORITY	20
5. DESCRIPTION OF ENVIRONMENTAL ASPECTS	22
6. ENVIRONMENTAL PROGRAMME.....	25
6.1 OBJECTIVES AND TARGETS	26
6.2 NON-COMPLIANCE	48
7. EVALUATION OF ENVIRONMENTAL PERFORMANCE	49
7.1 WASTE	50
7.2 WATER	60
7.3 ENERGY MANAGEMENT	69
7.4 EMISSIONS TO THE ATMOSPHERE.....	74
7.5 CARBON FOOTPRINT / GREENHOUSE GAS EMISSIONS.....	75
7.6 BIODIVERSITY	77
7.7 EFFICIENCY IN THE CONSUMPTION OF SOME MATERIALS	78
8. LEGAL REQUIREMENTS REGARDING THE ENVIRONMENT AND INDUSTRIAL SAFETY.....	79
9. VALIDATION.....	86



1. PORT AVENTURA ENTERTAINMENT, SA UNIPERSONAL

1.1 MOST DATA INFORMATION ABOUT THE PORTAVENTURA WORLD RESORT

- **Activity:** tourism and leisure
- **Location:** Vila-seca/Salou
- **Telephone:** 977 779 000
- **Web:**
www.portaventuraworld.com
- **CIF:** A-63,776,306
- **PortAventura Park/PortAventura Caribe Aquatic Park/Ferrari Land - CNAE Parks:** 93.21
- **PortAventura, El Paso, Caribe, Gold River, Colorado Creek and Mansión de Lucy hotels - CNAE Hotels:** 55.10
- **Convention Centre - CNAE:** 82.30
- **PortAventura Dreams Village**
- **Waste producer code:** P-26916.1
- **EMAS registration number:** ES-CAT-000070
- **ISO 14001:2015 certified registration number:** 3.00.07048
- **Environmental quality standard at the PortAventura, El Paso, Caribe, Gold River and Mansión de Lucy Hotels.**
- **Member of the EMAS Club:** Association of EMAS-registered organisations in Catalonia (www.clubemas.cat).
- **Corporate Responsibility Area:** Head of the Environmental Management System at PortAventura World (SGMA).
- **Environmental investments for the year 2021:** €991,877

1.2 PORTAVENTURA PARK: THEMATIC AREAS

PORTAVENTURA PARK (PAP)

6 completely different and fascinating worlds, each carefully themed down to the very last detail: Mediterranean, Polynesia, China, Mexico, Far West and SésamoAventura.

It offers more than 40 rides, up to 40 daily shows, 47 restaurants, as well as more than 31 shops and 9 game areas for the whole family:

Mediterranean

It pays homage to the different towns on the Catalan coast around the late 19th century and recreates a typical Catalan fishing village.

Polynesia

It recreates Polynesia late 19th century discovered by sailors such as Captain Cook and painted by great artists like Gauguin.

SésamoAventura

An area specially created for the fun of children in company of all the Sesame Street® characters.

China

An exotic monumental tour through the four eastern areas: the People's Republic of China, Imperial China, the Himalayas and Cambodia.

Mexico

A fabulous encounter with the ancient Mayan culture and colonial Mexico. An experience full of monuments, crafts and rides.

Far West

Recreates an American town with all the cowboy spirit and where nothing is missing: from an authentic saloon to a railway station, a mining area... or even a replica of the Grand Canyon of Colorado River.



1.3 CARIBBEAN PORTAVENTURA AQUATIC PARK (CAP)

A fantastic water park with a spectacular theming inspired by the Caribbean islands during the era of the pirates of the South Seas.

Its total area of 50,000 m² has 10 restaurants, 1 shop, 14 rides and slides, waterfalls, immense pools and green areas full of plants and palm trees.



1.4 FERRARI LAND (FL)

A unique theme park in Europe with 70,000 m² of fun. It has 16 fantastic rides and games, and a children's area with 5 rides specially designed for children, an incredible theming inspired by the most authentic Italy, and shows. In addition, we can find 7 restaurants and 6 shops.



Environmental certifications and standards held by our parks



1.3 OUR HOTELS



Hotel PortAventura (HPA): HT-000760 * * * *

It reproduces the character and charm of a small Mediterranean village. The large pool and the town square are the soul of the hotel. 500 rooms, four restaurants, a shop, entertainment, etc. And with direct access to PortAventura Park through the Mediterranean area.



Hotel El Paso (HEP): HT-000770 * * * *

With a colourful Mexican-style, it recreates a traditional hacienda. It has a total of 501 rooms, three restaurants, two bars, one shop and two pools, one of them with a sunken galleon. It offers an All-Inclusive board basis.



Hotel Caribe (HC): HT-000772 * * * *

With a tropical setting, it is surrounded by palm trees and has exceptional open spaces. It has 497 rooms, of which 26 make up the Club San Juan (a private complex with exclusive rooms), four restaurants, four pools (one sandy), a shop and a Wellness Centre.



Hotel Gold River (HGR): HT-000855 * * * *

Recreates a Far West town, emerged after the grip of gold fever. It has 549 rooms, distributed over several buildings that form the most significant parts of a Far West town. 78 of these rooms are located in the exclusive building The Callaghan's. It also has three pools, six restaurants and direct access to the Far West area of PortAventura Park.



Hotel Colorado Creek (HCO): HT-004868

Located in the Far West hotel complex, the Hotel Colorado Creek**** has two buildings with 150 and 141 spacious and exclusive rooms, the Creek Valley building is the new one of this year, and 48 cabins that offer a unique and special environment. The hotel has a spacious lobby, a buffet, a bar, a pool bar and a pool for adults and a children's pool. In addition, it has direct access to the Far West area of PortAventura Park.



Mansión de Lucy Hotel (HMdL): HT-000888

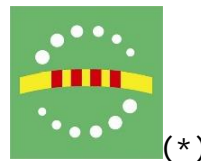
The most majestic and elegant of our hotels is housed in a Victorian-style building. It has 31 spacious rooms with great attention to detail. They are the most exclusive at the Resort. It has a pool, a restaurant, a bar and direct access to the Far West area of PortAventura Park.

Environmental certifications and standards held by our hotels



Sistema de Gestión
ISO 14001:2015

www.tuv.com
ID 9105033144



(*) 2021: The PortAventura, El Paso, Caribe, Gold River and Mansión de Lucy hotels have the environmental quality label issued by the Government of the Generalitat de Catalunya.

1.4 CONVENTION CENTRE (CDC)

PortAventura Convention Centre, with its privileged location between golf courses and excellent views of the sea, combines its Mediterranean-style architecture with the latest technologies. In 2019, the convention centre expanded its infrastructure by more than 6,000 m² to reach 20,000 m² with 24 meeting rooms in total and capacity to host 6,000 people.

The extension has a new room, called "Roma", which is divisible into three parts and has an area of 2,110 m².



1.5 PORTAVENTURA DREAMS VILLAGE (PADV)

A pioneering project in Europe of the PortAventura Foundation, conceived as a playful and interactive space, which aims to generate a positive effect on recovery from a psychological point of view, while allowing the nurture of new moments of family togetherness. The project focuses on minors between the ages of 4 and 17 who suffer (or have suffered) from serious illnesses. The village, a space of 8,850 m², has six houses of 135 m² without architectural barriers. Selected families enjoy a six-day stay totally free of charge. In addition to accommodation in the villas, the package includes access to the three PortAventura World parks and exclusive activities within the village.



Environmental certifications and standards held by PortAventura Convention Centre and PortAventura Dreams Village



Sistema de
Gestión
ISO 14001:2015

www.tuv.com
ID 9105033144





2. FROM THE BEGINNING, COMMITTED TO THE ENVIRONMENT

2.1 TIMELINE

1995	PortAventura is inaugurated, the first theme park in Spain and, among others, its flagship attraction: Dragon Khan.
1997	New roller coaster: Stampida.
1999	The show FiestAventura is presented.
2000	Sea Odyssey attraction: the great underwater simulator.
2001	The Temple of Fire is inaugurated.
2002	PortAventura becomes a tourist destination thanks to the opening of two hotels and a water park.
2003	The doors of the Hotel Caribe open.
2005	Hurakan Condor free fall arrives.
2007	Furius Baco is incorporated: extreme acceleration.
2009	Opening of the Hotel Gold River and the PortAventura Convention Centre.
2010	Celebration of the 15th anniversary.
2011	Opening of SésamoAventura [Sesame Adventure].
2012	New roller coaster: Shambhala. Driving school and road safety for children in China area. Parking Caravaning.
2013	The Resort's water park, PortAventura Caribe Aquatic Park, has been renovated with a new children's area and new attractions. Opening of the Labyrinth El Secreto de los Mayas in PortAventura Park.
2014	Opening of the new attraction Angkor: Adventure in the Lost Kingdom. In the summer of 2014, Cirque du Soleil settles at PortAventura World to represent the world of Kooza.

2015	20th anniversary celebration. Cirque du Soleil presents the Amaluna show at PortAventura World for the first time in Europe. The Callaghan's new building at the Gold River Hotel. Opening of the Hotel Mansión de Lucy: the first 5 * hotel in the Resort.
2016	Work begins on the new unique theme park in Europe: Ferrari Land.
2017	Opening of the Ferrari Land theme park, a unique theme park in Europe. 70,000 m2 with incredible attractions and fascinating spaces dedicated exclusively to the mythical Italian team. Cirque du Soleil visits PortAventura World with its Varekai show.
2018	Opening of a new Children's area in Ferrari Land, with 5 new attractions for the youngest visitors.
2019	Opening of the Hotel Colorado Creek ***** located next to the Mansión de Lucy ***** and Gold River ***** hotels. Opening of Street Mission, the first Sesame Street® dark ride in Europe, located in the SésamoAventura area of PortAventura Park. Expansion of the Convention Centre by more than 6,000 m ² . PortAventura Dreams Village opening.
2020	25 th anniversary celebration.
2021	World premiere of LaLiga TwentyNine's PortAventura World, a new generation sports bar where you can enjoy the excitement of LaLiga and the best sports competitions and The Beat Challenge, an immersive football video game where the digital universe and the visit to the park merge to complete multiple challenges. Enlargement of the Hotel Colorado Creek.



2.2 ENVIRONMENTAL COMMITMENTS



1997

Creation of the “Equip Verd” Environmental Committee.

2001

1st EMAS registration.

2003

1st environmental quality standard (Hotels).

2007

1st ISO 14001:2004 certification.

2008

Member of Catalonia’s Club EMAS.

2008

Commitment to the Global Compact. 10 principles of the Global Compact (www.globalcompact.org).

2009

1st edition of the Corporate Responsibility Report (using 2008 data).

2009

Joined *Travelife*: Sustainable tourism for hotels (until 2013).

2014

Received the *Travelife Gold Award* (until 2020).

2015

Committed to the achievement of the United Nation’s Sustainable Development Goals (SDGs).



2016

Committed to the Global Code of Ethics for Tourism of the World Tourism Organisation (UNWTO).



2017

Involvement in the United Nation's World Tourism Organisation's International Year of Sustainable Tourism for Development.



2018

New Corporate Responsibility Strategy (ESG) 2019-2021.



2019

1st Waste Management Traceability System certificate.

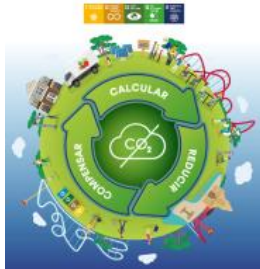


Hotel Colorado Creek, first CO₂ neutral hotel in the resort.



2020

Commitment to the Biodiversity Pact of Fundación Biodiversidad (Ecological Transition Ministry of the Government of Spain).



Extension to the entire Resort the offset of GHG emissions from the calculation of 2020 (scope 1 and 2).



2021

New Corporate Responsibility Strategy (ESG) 2022-2025.

Implementation of the EcoEduca Project.



Identification of climate risks and opportunities according to TCFD.



3. ENVIRONMENTAL POLICY

Port Aventura Entertainment, SAU is the manager and owner of PortAventura World Parks & Resort, a family leisure destination comprising PortAventura Park, PortAventura Caribe Aquatic Park, Ferrari Land, Hotel PortAventura, Hotel El Paso, Hotel Caribe, Hotel Gold River, Hotel Mansión de Lucy, Hotel Colorado Creek, PortAventura Convention Centre, Parking Caravaning and PortAventura Dreams Village and carries out its activities with the utmost respect for the environment and its surroundings.

In order to ensuring its commitment to environmental protection, it continually predicts, measures and improves environmental results. To do this, PortAventura World bases its approach on the following operational principles:

1. Ensure compliance with the legal requirements and other voluntary requirements subscribed to making them an integral part of the Environmental Policy.
2. Assign all the resources and responsibilities necessary to guarantee the achievement of the environmental goals that lead to a continuous improvement of the environmental behaviour, and designing processes that tend to minimize and prevent the environmental impacts of the activities carried out.
3. Ensure compliance with environmental goals through an environmental committee, "Equip Verd", with an advisory and executive nature, in order to lay the foundations to ensure respect for the environment.
4. Educate, train and raise awareness, at all levels, amongst company workforce to create an atmosphere that favours the progress of any environmental measure.
5. Communicate the Environmental Policy to all the people who work for the or on behalf of the organisation, as well as other stakeholders.
6. Identify the environmental aspects and their associated environmental impacts from a life cycle perspective.
7. Promote, to the maximum possible extent, projects that can involve our visitors in respecting the environment.
8. Preserve our region's biodiversity and ecosystems, protecting the species and habitats within it.
9. Work on improvements focused on the prevention and reduction of food loss and wastage, through goals that involve the workforce and visitors.
10. Promote and commit to mitigation and adaptation of practices to climate change: sustainable use of natural resources (water and electricity), promoting sustainable mobility and renewable electricity initiatives; encouraging reuse and minimal generation of wastes, prioritising waste treatment.
11. Guarantee that our suppliers share our same standards in environmental matters and are committed to our Policy within the Resort. Promote environmental criteria in the purchase of products, the contracting of services and the management of events, promoting circular economy initiatives.

Fernando Aldecoa

General Director of Operations and Finance

February 2022





4. ENVIRONMENTAL MANAGEMENT SYSTEM

4.1 SCOPE OF THE MANAGEMENT SYSTEM

Theme Park management: PortAventura Park, PortAventura Caribe Aquatic Park and Ferrari Land.

Hotels and restaurants: Hotel PortAventura, Hotel El Paso, Hotel Caribe, Hotel Gold River, Hotel Mansión de Lucy and Hotel Colorado Creek.

Convention centre: PortAventura Convention Centre.

PortAventura Dreams Village.

4.2 ORGANISATION

Environmental management at PortAventura World is based on two key figures:

Environmental Management System Representative (hereinafter, EMSR):

Has to be a manager. Acts as a liaison with the Management Committee and as the System Representative for regulatory purposes.

Equip Verd (or Environmental Committee):

A work group comprising of representatives from the different company departments, which has as its objective the correct and uniform management of the environment throughout the resort.

4.3 RESPONSIBILITY AND AUTHORITY

The responsibilities for the different roles within the system are:

EMSR

- Supervises the overall application and maintenance of the EMS (Environmental Management System) at PortAventura World.
- Acts as a liaison between the Management Committee and the Equip Verd.
- Appoints the secretary and members of the Equip Verd.
- Determines who is responsible for decision-making for proposals related to the EMS, targeted at improving PortAventura World's Environmental Policy.

Management Committee, Area Managers and Supervisors

- The Management Committee decides who to appoint to carry out the duties of the EMSR.
- Take decisions regarding environmental management of the resort, based on proposals submitted by the EMSR.
- Encourage implementation of the EMS in the respective departments.
- Management approves and signs the Environmental Policy.

Equip Verd (or Environmental Committee)

- Acts as a forum for exchange, debate, study and discussion regarding the PortAventura World EMS.
- Makes decisions on all aspects of the environmental management of the resort, provided that the EMSR believes it is within their competence.
- Puts forward and presents to the EMSR the implementation or development of proposals targeted at environmental improvements or changes in PortAventura World's Environmental Policy.
- Provides the Management Committee with all information related to the environmental decisions to be made.
- Establishes objectives and action for improvement in accordance with PortAventura World's Environmental Policy.
- Ensures strict compliance with applicable environmental and industrial safety legislation, as well as with the voluntary commitments made by the company.

Members of the Equip Verd

- Supervise EMS implementation and maintenance in PortAventura World, within the department/area that they represent.
- Provide Equip Verd with all necessary information on the development of the EMS for the department that they represent. Equip Verd members are responsible for referring EMS decisions, adopted by Equip Verd or by the Management Committee, to the departments or areas that they represent.
- Offer support, in environmental terms, to contract "Managers".



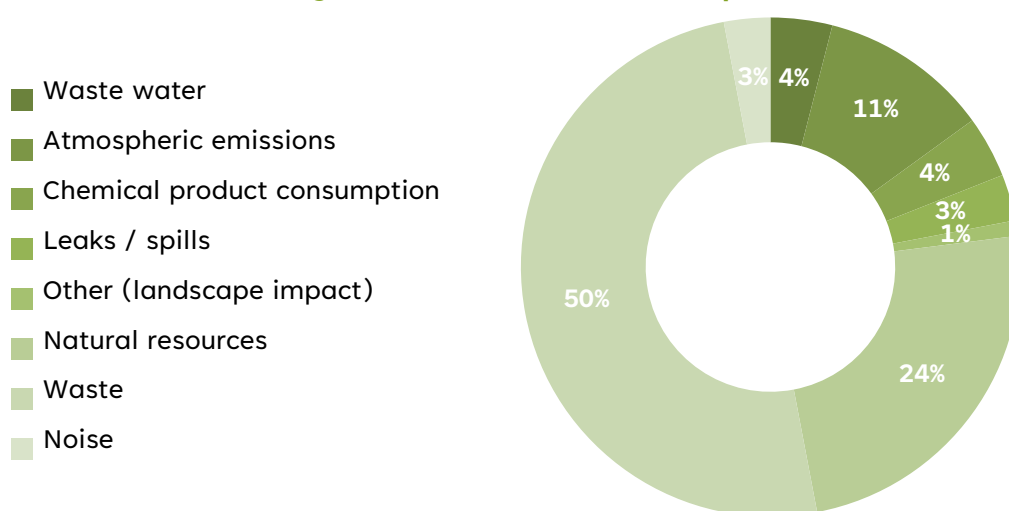


5. DESCRIPTION OF ENVIRONMENTAL ASPECTS

PortAventura World identifies the environmental aspects (under normal, abnormal and emergency conditions) associated with its present and future activities from a life cycle perspective and assesses them according to evaluation criteria that allow the significance and importance of each aspect to be quantified and classified as Significant or Insignificant.

The criteria to determine the significance of the environmental aspects are based on the existence of legislative regulations of the aspect, the linking of the aspect to some type of permit, the importance for stakeholders, the contribution of the aspect in affecting global environmental problems, the quantitative significance in relation to the total operation, the frequency, the consequences in case of emergency and the level of control over its effect.

Percentages for the environmental aspects identified



The significant environmental aspects and their impact are presented in the following table (both direct and indirect):

Significant environmental aspects 2021	Direct/ indirect	Nature of the aspect	Environmental impact
Consumption of water from the municipal mains supply	Direct	Use of natural resources	Depletion of natural resources
Paper/cardboard waste	Direct and indirect	Generation, recycling, reuse and elimination of waste	Soil or water contamination
Emission of gases into the atmosphere from visitors' transport	Indirect	Generation of emissions released into the atmosphere	Impact on air quality

One of the criteria to evaluate the significant environmental aspects is the quantitative significance in relation to the total operation to determine the impact of the aspect considering the global activity. Due to the exceptional situation caused by COVID-19, which was already mentioned in 2020, this quantification has been modified and evaluated in a particular way for each environmental aspect, so in some of them it has been valued in absolute value and not in relative value to the visits / overnight stays of the Resort.

The main reasons for significance are the following:

- The consumption of water from the municipal mains supply is due to the frequency of consumption and the quantity of the aspect.
- Paper and cardboard waste is due to the amount generated and that its raw material may be linked to deforestation.
- Gas emissions from visitors' transport is not an aspect in which PortAventura World can make a significant impact because it depends on the visitors' decision on which transport to use to get to the Resort. Also, PortAventura World carried out initiatives such as advertising campaigns that promote public transport, as well as the gradual installation of electric cars chargers in different car park of the Resort.

Debris waste, which was a significant environmental aspect in 2020, in 2021 it has been mostly recovered, so this aspect is considered insignificant.





6. ENVIRONMENTAL PROGRAMME

2020 AND 2021, YEARS MARKED BY HEALTH MEASURES TO PREVENT COVID-19

The exceptional measures adopted by the health authorities in order to contain COVID-19 did not allow us to offer our customers the PortAventura World experiences for the usual period of time. The Resort opened the season on 15 May until 9 January 2022, applying capacity, distance and disinfection restrictions at all times.

Since the beginning of the pandemic, following the recommendations indicated by international experts and institutions regarding safety against infectious viral diseases, including COVID-19, at PortAventura World we have installed all the necessary prevention processes to guarantee maximum safety and confidence among both our customers and our staff and the service provider companies that operate at the Resort.

Our environmental strategy nonetheless remains unchanged, maintaining our lines of work with respect to those set for the 2019-2021 period.

The final assessment of our objectives and indicators defined over the years 2020-2021 has been directly affected by the pandemic. As shown below, some of them cannot be objectively assessed, as in previous years, due to low activity both in terms of visits and overnight stays, which is why the figures are not in line with the environmental results.

6.1 OBJECTIVES AND TARGETS

The environmental objectives are proposed by the Equip Verd (Environmental Committee) and subsequently approved by the RSGMA (Environmental Management System Representative), together with the director of each department involved.

The environmental objectives are consistent with the environmental policy, the applicable legal requirements and the significant environmental aspects of PortAventura World, and take into account its risks and opportunities. They also include a commitment to continuous improvement in environmental actions.

The meetings of the Equip Verd monitor and track the evolution of these objectives, and the results are recorded in a computer application for environmental management.

In 2018, a new 2019-2021 corporate responsibility strategy was established that allows us to organise, identify and prioritise our actions and projects in the short and medium term in a structured manner. The tasks carried out during the 2021 financial year for the environmental objectives defined in the strategy for this period are shown below.

ENVIRONMENTAL OBJECTIVES OF THE 2019-2021 CORPORATE RESPONSIBILITY STRATEGY (EOB)

CIRCULAR ECONOMY



- Elimination of single-use plastics
- Zero waste
- Food waste minimisation

ENVIRONMENTAL POLICY



Points 6, 9, 10 and 11

GLOBAL COMPACT



Principles 7 and 8

www.globalcompact.org

SUSTAINABLE DEVELOPMENT GOALS



EOB164. ELIMINATION OF SINGLE-USE PLASTIC PACKAGING IN RESTAURANTS ACQUIRED BY PORTAVENTURA WORLD

Percentage of single-use plastic references eliminated or replaced:

2019 goal: 25% 2020 goal: 63% 2021 goal: 91%

Estimated date of completion: 31/12/2021

Compliance level 2021:

2019: 25% of plastic SKUs eliminated or replaced in restaurants.

2020: 79% of plastic SKUs eliminated or replaced in restaurants.

2021: 93% of plastic SKUs eliminated or replaced in restaurants.

Evaluation: period 2021, goal achieved.

Completed tasks:

- **T12. Alternatives to single-use plastic used in restaurants.** The substitution of single-use plastic alternatives for restaurants has been carried out. This year the knife, fork and napkin set were introduced or changed for wooden utensils with a paper wrapper, replacing the plastic set and the PLA material set; wooden dessert spoon wrapped in paper, instead of plastic and PLA material.

Other actions related to the elimination of plastic at the Resort:

- **T13. Replacing raincoats offered to customers with others that are more respectful of the environment.** The existing raincoats have been replaced by raincoats made of PEVA material, more respectful of the environment, including the message "I am an eco-friendly raincoat". They will be brought in at the start of 2022 season.

EOB165. ZERO WASTE

Percentage of recovered waste: goal > 90%

Estimated date of completion: 31/12/2021

Compliance level 2021:

2019: 90.90% of recycled waste

2020: 83.63% of recovered waste

2021: 97.32% of recovered waste

Evaluation: period 2021, goal achieved.

- **T15. AENOR Zero Waste Certification.** In February 2022, the data and waste management for the 2021 period were audited. This certificate guarantees that PortAventura World recovers more than 90% of the waste generated (reuse, recycling, or waste-to-energy), thus avoiding waste management by landfill disposal.



Other tasks implemented in 2021:

- **T10. Good environmental circular economy practices.** For the second consecutive year, the pumpkins used to decorate the Resort during Halloween were donated to a local shepherd, who collects them and uses them to feed his lambs.
- **T12. Reuse of the old litter bins at PortAventura Aquatic Park.** The old litter bins have been refurbished and are used mainly for specific events.
- **T13. Elimination of conventional keys for the opening of master doors by a jump system.**
- **T15. New paper roll holders for hand drying in the central office building.** The hand dryer roll holders have been changed for ones that cut the paper more efficiently, in order to minimize paper consumption and generate less waste.

- **T16. Replacement of traditional toilet paper roll dispensers with a single-dose system** that saves up to 40% of paper, according to a study carried out.

Other planned tasks:

- **T17. PortAventura World Agreement – Training and Work.** PortAventura World and the occupational inclusion company "Formació i Treball" have signed an agreement, applicable in 2022, for the transfer of 50,000 kilograms of organic waste produced at La Cantina restaurant. These leftovers will go to the future community composting centre in Vila-seca, which will be installed with the aim of promoting the social inclusion of young people and women by providing them with skills and jobs in the field of the circular economy, and specifically in closing the cycle and managing organic waste.

EOB166. FOOD WASTE MINIMISATION

Complete 100% of planned tasks

Estimated date of completion: 31/12/2021

Compliance level 2021: 100% of tasks performed (6 tasks achieved out of 6 planned tasks).

Evaluation: period 2021, goal achieved.


Tasks implemented in 2021:

The conditions for contributing to the reduction of food waste generated at the Resort are covered by both the framework of the EMAS/ISO 14001 Certification and the ISO 22000 Certification.

The operational approaches for the actions carried out and the established methodology focused on the following:

- **T3. Quantify donated food.** PortAventura World has implemented a food use project for surplus food (not on display) generated in hotels, table service and self-service restaurants. The food is collected by the "Taller Baix Camp", in collaboration with several entities in the area, which is responsible for distributing it to the Food Bank and to different entities. This year (2021), a total of 5,816 kg was donated (corresponding to a total of 16,616 servings).




The methodology scrupulously complies with applicable food safety standards and, to guarantee traceability, only includes the packaged and labelled product received from the supplier.

- **T4. ISO 22000 certification.** To ensure food safety (i.e., that the food is in suitable condition for consumption), this certification establishes the safety measures to allow food to be safely consumed until the use-by date. In 2021, the ISO 22000 Certification renewal audits were carried out at the PortAventura Hotels, El Paso Hotel Gold River, Colorado Creek and Mansión de Lucy. PortAventura World maintains the commitment to extend the certification to all hotels and the Central Kitchen.
- **T7. Recover food not consumed by customers.** Within the project for the use of food surplus not consumed by customers at self-service and table service restaurants, our customers have the option of taking the leftover food from their meal conveniently packaged and labelled within the guidelines to safeguard the state of the food and allow appropriate consumption.
 
- **T8. Manual of Criteria for the control of food waste.** This Manual was approved on 03/30/2021, and aims to guarantee the correct application of the regulations related to food waste, as well as to establish the methodology to be followed to avoid such waste.
- **T9. Promotion of the consumption of local and seasonal produce.** PortAventura World maintains a commitment to purchase local and seasonal agri-food produce for the restaurant services of the Resort hotels.
- **T10. Incorporate criteria on food waste into the February 2022 revision of the PortAventura World Environmental Policy.** Point nº 9: Work on improvements focused on the prevention and reduction of food losses and waste, through objectives that seek the involvement of workers and visitors.

Tasks planned for 2022:

- **T5. Training of the restaurant team.** A specific training programme has been designed for the restaurant team with the aim of minimising waste and having inventories with just-in-time production, in order to reduce food waste (food safety training). This training will be carried out in 2022 through the use of the "e-learning" platform, where restaurant employees will be trained both at the production level and at the service level, to improve their involvement in combating food waste.

SUSTAINABLE AND SAFE MOBILITY 	<ul style="list-style-type: none"> • Sustainable mobility for employees • Sustainable mobility for service providers within the Resort • Sustainable mobility for visitors
---	---

ENVIRONMENTAL POLICY 	GLOBAL COMPACT 	SUSTAINABLE DEVELOPMENT GOALS 
Points 4, 10 and 11	Principles 7 and 8 www.globalcompact.org	

EOB167. SUSTAINABLE MOBILITY FOR EMPLOYEES
Estimated date of completion: 31/12/2021
Compliance level 2021: 0 scheduled tasks.
Evaluation: period 2021, deferred objective.
As a consequence of the situation derived from COVID-19 and the health measures that must be followed to avoid infection, the Fesedit online platform was not available for workers to share a vehicle when travelling from home to work and vice versa.
EOB168. SUSTAINABLE MOBILITY FOR SERVICE PROVIDERS WITHIN THE RESORT
Service providers operating within the PortAventura World Resort must use electric, hybrid or other more sustainable vehicles:
2019: > 20% compared to the previous year
2021: 100% providers
Estimated date of completion: 31/12/2021
Compliance level 2021: Service providers derived from old contracts and extensions have been updated with the new sustainable vehicle clause. Follow-up is being carried out to define and agree on the steps to be followed together with the contractors.

Evaluation: period 2021, deferred objective.

Implemented tasks:

- **T3. Incorporate the obligation to have sustainable vehicles in tenders for service providers.** A clause has been added to the new tenders with PortAventura World service providers to include sustainable vehicles in their fleet to provide services at the Resort.

Tasks planned for 2022:

- **T4. Promotion of more sustainable vehicles from contractor companies.** After the implementation of the clause in the service provider tenders, they are all being monitored to ensure this implementation in the coming months of 2022. Currently, some service provider companies have already implemented sustainable vehicles in their work fleet.

EOB169. SUSTAINABLE MOBILITY FOR VISITORS

In 2021, 100% of our hotels and car parks for customers must have recharging points for electric vehicles, which will increase according to the demand for this service by our customers.

Estimated date of completion: 31/12/2021

Compliance level 2021: 0 scheduled tasks (electric chargers available throughout the Resort since 2020).

Evaluation: period 2021, goal achieved.

All our hotels and car parks for customers of the parks will have electric chargers for vehicles in 2021.

ENERGY TRANSITION



- Increase in use of renewable energy
- Increase in energy efficiency

ENVIRONMENTAL POLICY



Points 4 and 10
Related environmental aspects: electricity consumption.

GLOBAL COMPACT



www.globalcompact.org

Principles 7 and 9

SUSTAINABLE DEVELOPMENT GOALS



EOB 170. INCREASE IN USE OF RENEWABLE ENERGY

100% electricity from renewable sources

Estimated date of completion: 31/12/2021

Compliance level 2021: 100% of the electrical energy comes from renewable energy sources (certificate of origin guarantee).

Evaluation: period 2021, goal of 100% renewable energy achieved.

According to the Certificate from the National Markets and Competition Commission. A note indicates that: "In the event that when downloading the information on redemptions for a certain CUPS no data appears, it must be considered that the percentage of renewable energies/high-efficiency cogeneration regarding said CUPS is the figure that appears for the corresponding reseller company, according to data from the electricity labelling report".

Tasks in process:

- **T2. Photovoltaic plant.** In accordance with the objectives of mitigating climate change and decarbonising the energy model, PortAventura World continues with the project to install a photovoltaic plant that will provide clean and renewable energy to the Resort. The project, which continues to advance and fulfil the necessary administrative procedures, is currently in the preparation phase of the basic and executive projects, as well as landscape integration. The photovoltaic park will have various spaces that can be visited, such as:
 - Demonstration route and renewable energy educational space.

- Viewpoint integrated into the landscape to view the photovoltaic park.
- Viewpoint and access to the archaeological remains site.
- Hotels for pollinating insects and unique plant species typical of the natural environment.



EOB171. INCREASE IN ENERGY EFFICIENCY

Reduce electrical energy consumption (MWh/1,000 visits-overnight stays/year) compared with the previous year at all the facilities (PAP+CAP, FL, HC, HEP, HPA, HGR, HMdL, CdC and PADV). (NO EVENTS).

Reduce natural gas consumption (MWh/1,000 visits-overnight stays/year) in relation to the previous year at all the facilities (PAP+CAP, FL, HC, HEP, HPA, HGR, HMdL, CdC and PADV). (NO EVENTS).

Estimated date of completion: 31/12/2021

Compliance level 2021:

Electric energy consumption (MWh/1,000 visits-overnight stays/year)	Goal	Real
2019	5.95	5.78
2020	5.74	16.42
2021	10.27	7.94

Natural gas consumption (MWh/1,000 visits-overnight stays/year)	Goal	Real
2019	1.16	1.13
2020	1.13	2.02
2021	1.84	1.51

Evaluation: period 2021, goal achieved.

Implemented tasks:

- **T8. Execution of the plan to replace lamps with LED alternatives** (continuation of the 2020 Plan).
- **T9. Certification of the Main Dreams Building according to the BREEAM reference.** In the month of November 2021, we received the Sustainable Building in Use Certification according to the BREEAM benchmark. This certification certifies that the construction of the main building of PortAventura Dreams Village has been carried out in a sustainable manner, respecting all environmental aspects linked to the life cycle of the building (waste, energy efficiency, energy, water, materials, use soil, environmental pollution, among others).
- **T10. Replacement of equipment with new ones that provide greater energy efficiency.** Equipment has been replaced in various areas of the Resort with greater energy savings and efficiency.
- **T11. New light supply in the South parking area,** to increase control over the light phases.
- **T12. Air conditioning and machines at Hotel Port Aventura.** Air conditioning equipment and machines have been acquired at the Hotel PortAventura with greater energy savings and efficiency.

CLIMATE CHANGE, BIODIVERSITY AND WATER



- Low-carbon resort
- Increase in water efficiency
- Partnerships to conserve biodiversity
- Animal well-being practices

ENVIRONMENTAL POLICY



Points 8 and 10

GLOBAL COMPACT



Principles 7 and 8

SUSTAINABLE DEVELOPMENT GOALS



www.globalcompact.org

EOB172. LOW-CARBON RESORT

Reduce the emission of greenhouse gases (tonnes of CO₂ equivalent per year) in relation to the year 2018* with respect to the ratio of visits-overnight stays

*The calculation and scope of the 2019-2020-2021 categories are shown in the Environmental Declarations corresponding to each year. Source: *Guia pràctica per al càlcul d'emissions de gasos amb efecte d'hivernacle (GEH)* of the Catalan Office for Climate Change on the date of publication indicated in the Environmental Statements corresponding to each year.

Estimated date of completion: 31/12/2021

Level of compliance 2021:

Annual greenhouse gas emissions (equivalent tonnes of CO ₂ /1,000 visits-overnight stays/year)	Goal	Real
2019	<1.21	1.23
2020	<1.14	4.07
2021	<1.31	1.95

Evaluation: period 2021, non-representative valuation.

In this 2021 period, the low level of activity at the Resort due to the situation caused by the COVID-19 Pandemic penalised this indicator, making this year's result unrepresentative. The tasks carried out focused on neutralisation actions and adherence to environmental commitments.

Implemented tasks:

- **T5. Neutralisation of our carbon footprint.** In 2021, 100% of the GHG emissions emitted (scope 1, 2 and some of scope 3) were neutralised during the year 2020, corresponding to 4,351 VCU, certified by VERRA and destined to protect and conserve one of the most important migratory corridors of our planet located on the coast of Guatemala.
- **T6. Adherence to Climate Action commitments by PortAventura World.** In December 2021, PortAventura World requested adherence to the Climate Action commitments in order to continue applying measures that promote low carbon emissions and the fight against climate change.

EOB173. ADAPTATION TO FUTURE CLIMATE SCENARIOS

Execution of TCFD analysis in 2021

Estimated date of completion: 31/12/2021

Compliance level 2021: 100% (1 planned task and 1 achieved task).

Evaluation: period 2021, objective reached.

Implemented tasks:

- **T1. TCFD (Task Force on Climate-related Financial Disclosures).** A sample-based study has been carried out into financial risks and opportunities related to the climate.

In 2021, an analysis of the risks and opportunities of climate change was carried out according to the TCFD methodology at PortAventura World, with recommendations related to the climate taken into account and an assessment of all those real risks and opportunities that climate change poses for PortAventura World.

EOB174. INCREASE IN WATER EFFICIENCY

Reduce the consumption of drinking water (m³/1,000 visits-overnight stays/year) in relation to the previous year, at all the facilities (PA+CAP, FL, HC, HEP, HPA, HGR, HMdL, HCO, CdC and PADV). (NO EVENTS).

Estimated date of completion: 31/12/2021

Compliance level 2021:

Water for human consumption (m ³ /1,000 visits-overnight stays/year)	Goal	Real
2019	123.07	129.81
2020	128.62	370.47
2021	264.14 ⁽¹⁾	216.51

Evaluation: period 2021, objective achieved.

In this 2021 period, activity was not comparable to a normal year as a result of the current situation derived from COVID-19, so the result, although it is within expectations, is not representative and cannot be extrapolated to a normal season.

(1) During 2021, a correction was made to the objective set-in terms of water efficiency. The value was 202.36, but after taking into account the consumption included in the minimum monthly billing, this value was modified to that referenced in the corresponding section.

Completed tasks:

- **T4. Improvement in water saving.** Elements have been installed to improve water saving, such as filtration pumps and softeners in different parts of the Resort.
- **T5. Reduction of water for cleaning due to improvements in coatings and pavements.** During 2021, the coatings of the south lake of the Hotel PortAventura were improved and the rainwater grids in the swimming pools at the Hotel Gold River were upgraded.
- **T6. Improvement of consumption control with the installation of controllers in programmers and meters.** Controllers have been installed to carry out more agile and straightforward telematic control to generate savings in water consumption.

EOB175. PARTNERSHIPS TO CONSERVE BIODIVERSITY

Achievement of 100% of the planned tasks

Estimated date of completion: 31/12/2021

Compliance level 2021: 100% achievement of planned tasks for 2021 (1 task achieved out of 1 planned task).

Evaluation: Period 2021, goal achieved.

Completed tasks:

- **T3. Maintenance of the agreement between SEO/BirdLife and PortAventura World,** for the citizen science programme for the scientific monitoring of birds in Spain.

EOB176. ANIMAL WELL-BEING PRACTICES

Achievement of 100% of the planned tasks

Estimated date of completion: 31/12/2021

Compliance level 2021: 100% achievement (2 tasks achieved out of 2 planned tasks).

Evaluation: 2021 period, goal achieved.

Completed tasks:

- **T7. Collaboration with the administration in terms of birdlife conservation.** During 2021, collaboration was carried out with rural agents for the delivery of a protected species that accessed the facilities, specifically a protected specimen of *Caprimulgus europaeus*, known colloquially as *Enganyapastors*.

- **T8. Protection and awareness of local birds (common house martin).** At PortAventura World we are aware of the need to protect and care for biodiversity, which is why we pay special attention to the colony of Common House Martin (bird of house martin family) that we have in the park. These birds fulfil a very important environmental function, because wherever they are, they become excellent indicators of air and water quality.



Tasks deferred to 2022:

- **Prepare a procedure or document on the management of biodiversity in the Resort.** This document is intended to give importance and consideration to the biodiversity present in the Resort and to jointly prepare a Value Contribution Sheet, an infographic of the park's flora. Currently there is an inventory of the existing flora at the Hotel Colorado Creek.

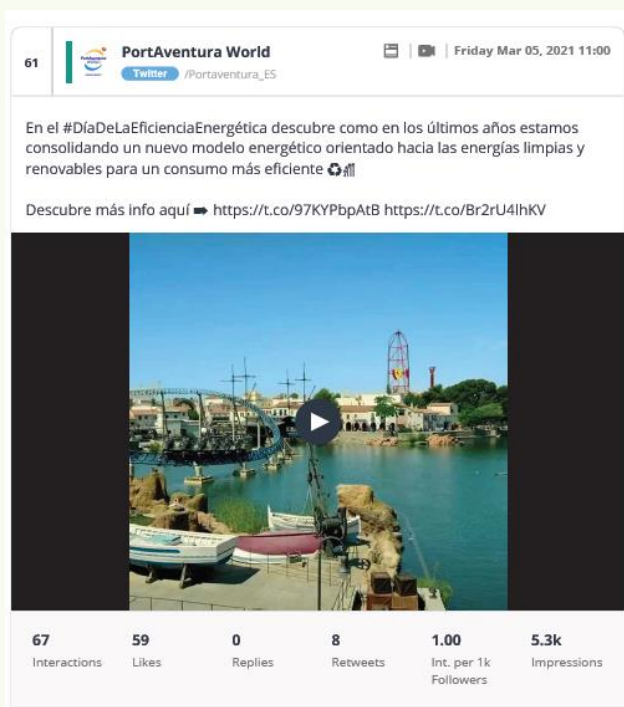
AWARENESS AND ENVIRONMENTAL TRAINING 	<ul style="list-style-type: none"> • Environmental communication and involvement for visitors • Environmental education and awareness for employees
--	---

ENVIRONMENTAL POLICY 	GLOBAL COMPACT  www.globalcompact.org	SUSTAINABLE DEVELOPMENT GOALS 
Points 4 and 7	Principles 7 and 8	

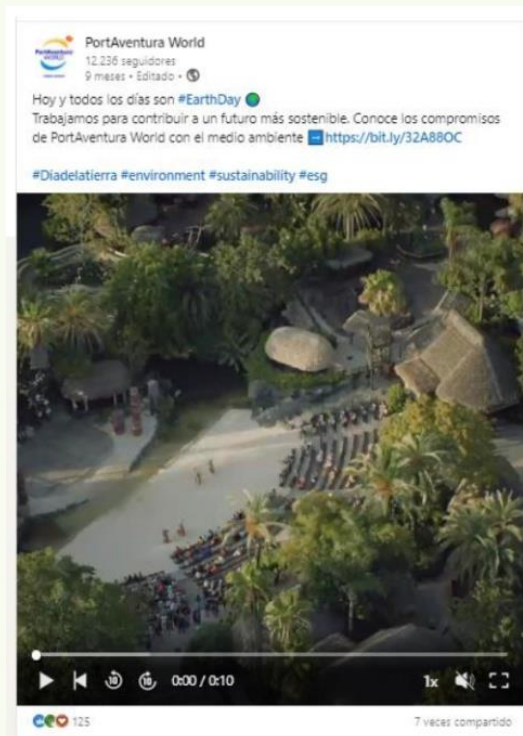
EOB177. ENVIRONMENTAL COMMUNICATION AND INVOLVEMENT FOR VISITORS
Estimated date of completion: 31/12/2021
Compliance level 2021: 100% achievement (10 tasks achieved out of 10 planned tasks).
Evaluation: period 2021, goal achieved.
Completed tasks: <ul style="list-style-type: none"> • T6 and 14. EcoEduca Project. Since being set up in 2020, the PortAventura - EcoEduca programme aims to complement the syllabus of the school period for primary and secondary students with practical and interactive workshops to achieve greater effectiveness in the assimilation of knowledge. It consists of two workshops: Biodiversity and Zero Waste, which are carried out with experts in each of the subjects and are free of charge for schoolchildren. The project was honoured as "best innovative and creative proposal that contributes to sustainable development" at the Jordi Cartanyà 2021 awards, delivered in November in Tarragona by the Tourist Board, recognising the best business initiatives promoted by the tourism sector of the Costa Daurada and Terres de l'Ebre region. The prize money will be donated to the Institut Català d'Ornitologia to collaborate in initiatives that support biodiversity, and especially the protection and care of the largest colony of house martins in Europe, located in PortAventura World. • T11. Co-responsible Yearbook. Publication in the Co-responsible Yearbook of the PortAventura World case study, on 27/11/2021.

- **T13. Implement the 2021 Environmental Communication Plan.** The implementation of the internal and external Communication Plan for the current year has been approved.

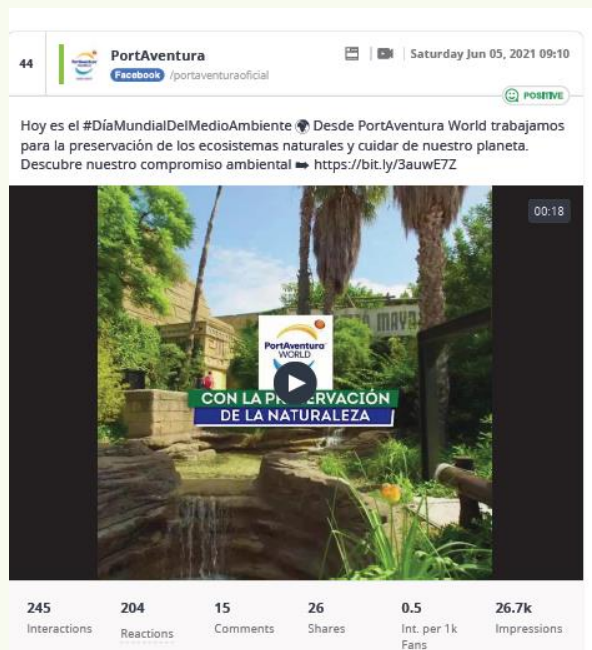
MARCH– #EnergyEfficiencyDay (RSS)



APRIL – #EarthDay – Earth Day (RSS)



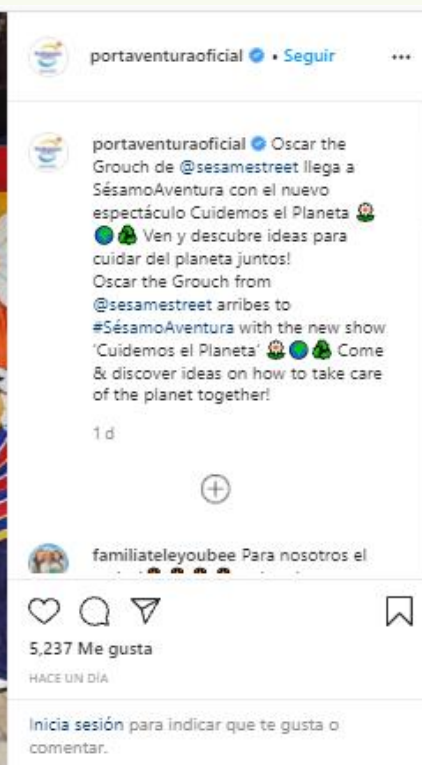
JUNE– #WorldEnvironmentDay (RSS)



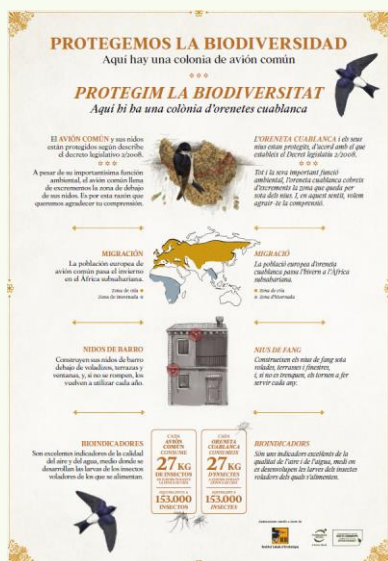
DECEMBER – #HappyBlueXmas (RSS)



- **T15. Oscar the Grouch Show: Let's take care of the planet.** Oscar the Grouch and the characters from Sésamo Aventura star in the new show "Let's take care of the planet", in which little ones learn the values of a sustainable world: the responsible use of resources and the importance of recycling.



- **T16. Awareness towards local birdlife (*common house martin*).** At PortAventura World we are aware of the need to protect and care for biodiversity, which is why we pay special attention to the common house martin colony that we have at the park. These birds fulfil a very important environmental function, because wherever they are, they become excellent indicators of air and water quality.



- T17. Participation of PortAventura World in informative presentations on the environment in 2021.** Throughout 2021, various participations in presentations took place in collaboration with other external entities. These conferences served to present the actions that PortAventura World carries out.
 - 27 September 2021.** Within the framework of the IAAPA (International Association of Amusement Parks and Attractions), face-to-face workshop at PortAventura World for the first edition of Sustainability Day. Presentation by the Director of Sustainability: *Our journey to become a Carbon Neutral Resort*
 - 04 November 2021.** “CSR as a strategic value” presentation within the conference held by the company CTAIMA, where aspects related to the environment, industrial safety and occupational risk prevention were addressed during a three-day event. This presentation was carried out by the Director of Sustainability.
 - June 17, 2021.** Speakers at a virtual workshop organised by the European Commission, to discuss possible future developments of EMAS, with the aim of identifying ways to further strengthen the role of EMAS when addressing the key challenges of environmental and sustainability policies. The presentation was given by the Director of Sustainability.
- T19. QR app sticker on guide dispensers.** PortAventura Word has worked to reinforce the communication of the app to encourage downloads and reduce the consumption of guides in paper format. To this end, stickers have been placed on the guide dispensers themselves, allowing customers to access the guides via their mobile phone.



- T20. Christmas in a shade of blue: Veri Tree.** PortAventura World, firmly committed to respecting the environment and seeking ways to achieve a more conscious and respectful impact on the planet through its activity, has collaborated with Agua de Veri to jointly create a tree of 5,000 r-PET bottles (made with 100% recycled and 100% recyclable PER) used by visitors to the park, six metres high and with the

slogan 'Happy Blue Christmas', for more conscious parties committed to our environment. The project sought to convey to theme park visitors the importance of recycling to generate less waste and make them part of the circular economy, as a fundamental part of the resort's own strategy.

- **T21. PortAventura World on the innovation route (INNOBUS 2021).** PortAventura World took part in Innobus 2021, the innovation route organised by Innobaix and the Barcelona Metropolitan Area, which aims to connect young talent with companies in the territory through innovation challenges. The team of students and the organisers of the programme were able to enjoy a day in the park and a corporate presentation. PortAventura World was also part of the jury at the final gala for the assessment of the innovation projects presented.
- **The IAAPA rewards PortAventura World for its sustainability strategy.** The Global Association for the Attractions Industry (IAAPA) has rewarded PortAventura World for its strategic commitment in terms of sustainability "in both the social and environmental aspects" with the 'Iaapa Emea Award for Extraordinary Efforts'.

Tasks scheduled for 2022:

- **T13. Replacing raincoats offered to customers with others that are more respectful of the environment.** The existing raincoats made of PVC have been replaced by raincoats made of PEVA material, more respectful of the environment. The message "I am an eco-friendly raincoat" has been included to raise awareness among customers. They will be brought in at the start of the 2022 season.

EOB178. ENVIRONMENTAL EDUCATION AND AWARENESS FOR EMPLOYEES

Estimated date of completion: 31/12/2021

Compliance level 2021: 100% achievement (5 planned tasks and 5 achieved tasks).

Evaluation: period 2021, goal achieved.

- **T2. Provide environmental training through e-learning for permanent staff.** Different training sessions on good practices have been carried out through the 'e-learning' platform for permanent staff, as well as face-to-face training on 'Environmental and Industrial Safety Legislation Updates' for the internal team of people involved in the Environmental Management System and the safety of facilities. In total, 1,816 people were trained throughout the year.
- **T10. Implement a new online platform for employee training/awareness.** With the aim of having an appropriate space to carry out the training for employees at the facilities, a new online platform has been implemented to allow users to access training in the form of courses.

- **T11. Sustainability Day IAAPA EXPO EUROPE 2021.** In order to share strategies that promote the development of sustainable and planet-friendly leisure options, Sustainability Day was held at PortAventura World to coincide with the world day for sustainable tourism.



- **T12. Update of the contents of the Manual of Good General Environmental Practices.** The contents of the Manual of Good General Environmental Practices have been updated, including section 12 on Food Waste to inform all PortAventura World staff.
- **T13. Updating of the induction training content for new members of Equip Verd.** The induction training for new members of Equip Verd has been updated, implementing EMAS induction training for non-experts.

NEW ESG STRATEGY (2022-2025)

With the closure of the objectives for the 2019-2021 period, PortAventura World has defined what will be the new Environmental (E), Social (S) and Governance (G) strategy (ESG) for the forthcoming period, covering the years 2022-2025. The preparation of the new strategy is based on a new materiality analysis, which is essential in order to ascertain the needs and expectations of our stakeholders. The environmental objectives are consistent with the environmental policy established by PortAventura World.

ENVIRONMENTAL OBJECTIVES	    
 <p>Energy transition and climate change</p>	<p>Commit to reducing GHG emissions at the Resort in scopes 1 and 2 according to the SBT initiative.¹</p> <p>1/3 of the energy consumed within the Resort derived from renewable energy generated on site by the photovoltaic plant.²</p> <p>Reduce the electrical energy consumption of the Resort.</p>
 <p>Circular economy and efficient resource management</p>	<p>Recover waste generated at the Resort.</p> <p>Reduce food waste generated at the Resort.</p> <p>Reduce the water footprint.</p> <p>Obtain LEED certification for all new projects (refurbishment and new construction).</p>

(1) Included in the SBTi initiative to reduce total GHG emissions by 25% by 2025.

(2) The photovoltaic plant will be in operation in 2023.

6.2 NON-COMPLIANCE

PortAventura World, with the aim of involving staff in the environmental management system (EMS), has carried out awareness-raising work aimed at the entire workforce and has ensured that they know how to act in the event of detecting any anomaly or non-compliance with the requirements of the environmental management system and how to communicate it.

The detection of non-compliances is a great challenge for our company, since it helps us to solve existing incidents and to act proactively, always focusing our actions on continuous improvement.





7. EVALUATION OF ENVIRONMENTAL PERFORMANCE

For the definition of environmental performance indicators, the Sectoral Reference Document (DRS) approved by Decision 2016/611 of the Commission, of April 15, 2016, regarding the reference document on best practices has been taken into account of environmental management, the sectoral indicators of environmental behaviour and the comparative parameters of excellence for the tourism sector.

The results obtained from the indicators mentioned in this environmental performance assessment section have been generally affected by the exceptional health emergency situation experienced by COVID-19. Although the activity of the Resort has been activated, it has been significantly low compared to the number of visitors obtained in 2019.

The Resort has maintained a minimum activity, throughout the period of inactivity, to comply with the legal requirements that affect it, as well as to maintain the ideal conditions of its facilities. For this reason, the result of the environmental behaviour indicators has been affected when evaluated by the ratio of visits-overnight stays.

7.1 WASTE

Since the Resort opened to the public in 1995, driven by a spirit of respect, improvement and commitment to the environment, PortAventura World has progressively increased the amount of waste fractions segregated at source.

PortAventura World has an area that deals with waste management, and for this purpose, contracts specialized companies in the sector. These companies are responsible for installing containers for the collection of the different fractions of waste, their collection and transport to the authorized manager for recovery and disposal.

The waste is accounted for by the total of the resort, so the Sectoral Reference Document indicators cannot be taken into account.

WASTE MANAGEMENT

The number of fractions of waste generated will always be variable, since the operation of the activity is also variable. Due to the particularity of the facilities, the waste varies according to the operational needs.

Within the objective of minimizing the generation of waste, we work with contractor companies and our own personnel on the recycling and proper use of work materials. In the year 2021, 30 waste fractions were segregated. The recovery management channel is maintained as the main waste management channel compared to its elimination.

Below, we present a descriptive table with the main characteristics of the waste management carried out at PortAventura World.

WASTE		Type 1 Waste generated by the operation of the business, produced, directly or indirectly, by our customers	Type 2 Waste generated by support activities and company structure
COLLECTION METHOD		Itinerant	Individual
CONTAINERS	Non-hazardous	1 m ³ /5 m ³ /6 m ³ /drums/big bags	5 m ³ /14 m ³ /20 m ³ /30 m ³ /big bags
	Hazardous	<i>big bags</i> specials/cylinders 150 l/cub containers 1 m ³	<i>big bags</i> specials/cylinders 150 l/cub containers 1 m ³
COLLECTION POINTS	Non-hazardous	All Resort	All Resort
	Hazardous	All Resort	Green points in the areas near buildings number 112 and 113 and in the Resort workshops
NON-HAZARDOUS WASTE FRACTIONS		Cooking oil Paperboard Scrap (kitchen cans) Glass containers light packaging Mixed waste (General and MSW) Batteries Plastic Organic waste	<div>Bulky banal</div> <div>Wood</div> <div>Pumpkins</div> <div>Mixed waste (General and MSW)</div> <div>Copper wire</div> <div>Paperboard</div> <div>Batteries</div> <div>Scrap</div> <div>Tires</div> <div>Glass</div> <div>Plastic</div> <div>Glass containers</div> <div>Vegetable remains, straw</div> <div>Light packaging</div> <div>Luminaires</div> <div>Debris</div> <div>Cooking fats</div>

HAZARDOUS WASTE FRACTIONS	Contaminated packaging	Absorbents	Laboratory chemicals
		Mineral oil	
		Empty aerosol cans	Traces of paint
		Batteries and accumulators	Aqueous cleaning liquids
		Lead battery	Waste paint with solvents
		Used waxes and fats	Organic or hazardous substances
		Electronic scrap	Other solvents and solvent mixtures
		Contaminated packaging	
		Oil filters	Used Mineral Oil
		Gasoline	Silicones
		Hypochlorite out of use	
		Refrigerators	
		Fluorescent	
		Gases in pressure vessels	

Likewise, some PortAventura World suppliers manage their waste directly.

Evolution of the different waste fractions

Waste	ELW	2019		2020		2021	
		Tonnes	t/million visits	Tonnes	t/million visits	Tonnes	t/million visits
Absorbents	150202	3.91	0.61	4.38	4.18	2.88	0.73
Cooking oil	200125	34.53	5.41	7.21	6.89	19.51	4.94
Mineral oil	130205	2.11	0.33	2.47	2.36	1.65	0.42
Empty aerosol Cans	150111	-----	-----	0.16	0.15	0.26	0.07
Bulky banal	200307	72.46	11.34	16.58	15.85	26.16	6.63
Batteries and accumulators ⁽⁶⁾	200133	-----	-----	0.85	0.81	0.55	0.14
Copper wire	170411	-----	-----	1.62	1.55	-----	-----
Carton and paper	200101	455.12	71.25	138.25	132.11	288.75	73.19
Pumpkins ⁽⁵⁾	200302	8.08	1.26	1.70	1.62	-----	-----
Lead batteries ⁽⁶⁾	160601	-----	-----	-----	-----	0.39	0.10
Scrap	200140	127.18	19.91	63.60	60.78	66.18	16.77
Electronic scrap	200135	7.00	1.10	3.67	3.51	4.43	1.12
Non-special electronic scrap	200136	3.12	0.49	1.03	0.98	2.36	0.60
Electronic scrap game machines ⁽⁴⁾	200113	-----	-----	0.34	0.33	-----	-----
Contaminated packaging	150110	10.19	1.59	4.35	4.15	7.45	1.89
Flat glass	200102	3.28	0.51	2.96	2.83	2.18	0.55
Glass containers	150107	73.46	11.50	17.12	16.36	31.96	8.10

Waste	ELW	2019		2020		2021	
		Tonnes	t/million visits	Tonnes	t/million visits	Tonnes	t/million visits
Mixed light packs	150106	252.95	39.60	65.17	62.27	207.47	52.58
Debris	170107	310.42	48.60	208.16	198.92	269.72	68.36
Oil filters	160107	-----	-----	0.03	0.03	-----	-----
Fluorescent	200121	0.91	0.14	0.93	0.89	1.26	0.32
Gases in pressure vessels	160504	0.38	0.08	-----	-----	-----	-----
Cooking fats	20204	35.02	5.48	8.56	8.18	32.94	8.35
Gasoline ⁽⁴⁾	130702	-----	-----	0.02	0.02	-----	-----
Disused hypochlorite, other bases ⁽⁴⁾	60205	-----	-----	0.07	0.07	-----	-----
Luminary	160214	18.17	2.84	3.66	3.50	3.79	0.96
Water with traces of hydrocarbons ⁽¹⁾	130507	21.85	3.42	-----	-----	-----	-----
Wood	200138	181.65	28.44	128.23	122.53	84.24	21.35
Mixed waste (General and MSW)	200301	1,804.27	282.46	500.37	478.15	1063.25	269.49
Tires	160103	2.78	0.44	0.04	0.04	0.24	0.06
Refrigerators	200123	2.14	0.33	1.31	1.25	0.37	0.09
Other solvents and solvent mixtures ⁽²⁾	140603	0.23	0.04	-----	-----	0.08	0.02
Baton stacks	160604	0.31	0.05	0.26	0.25	0.18	0.05
Plastic (not containers)	200139	13.72	2.15	6.33	6.05	12.95	3.28

Waste	ELW	2019		2020		2021	
		Tonnes	t/million visits	Tonnes	t/million visits	Tonnes	t/million visits
Laboratory Chemicals ⁽⁷⁾	160506	0.36	0.06	0.09	0.08	1.58	0.40
Paint waste containing organic solvents or hazardous substances	80111	0.15	0.02	1.70	1.62	0.08	0.02
Organic waste ⁽⁵⁾	200108	584.40	91.49	156.10	149.17	502.31	127.31
Vegetable remains, straw	200201	33.76	5.29	16.54	15.81	72.40	18.35
contaminated land	170503	-----	-----	-----	-----	-----	-----
Textile	200111	11.20	1.75	1.34	1.28	-----	-----
Toner ⁽³⁾	80318	0.02	0	-----	-----	-----	-----
Total tonnes of waste generated		4,075.11	638	1,365.18	1,304.57	2,707.56	686.25

Tonnes of waste generated rounded to 2 decimal places.

(1) ELW 130507 Water with traces of hydrocarbons. It has not been generated in 2021 compared to 2019 since after the supervision of the manholes it was not necessary to empty them.

(2) ELW 140603 Other solvents and solvent mixtures It has not been generated in 2020 since this waste depends on the cleaning of maintenance parts by Safety Kleen. In 2021, with the improvement in activity, this waste has been produced again.

(3) ELW 080318 Toner has not been generated since 2019 because it is managed by the company that maintains the printing machines.

(4) ELW waste that was generated in 2020 and has not been generated in 2021 is waste derived from the maintenance activity that was prioritized due to the low activity of the Resort as a result of the COVID-19 pandemic situation.

(5) ELW 200302 Pumpkins. They have not been generated in 2021 compared to 2020 since those pumpkins that have not been donated to a local shepherd, as can be evidenced in the EOB165 "Zero Waste", have been managed by carrying out a new system implemented and are currently managed by the ELW 200108 "Organic waste".

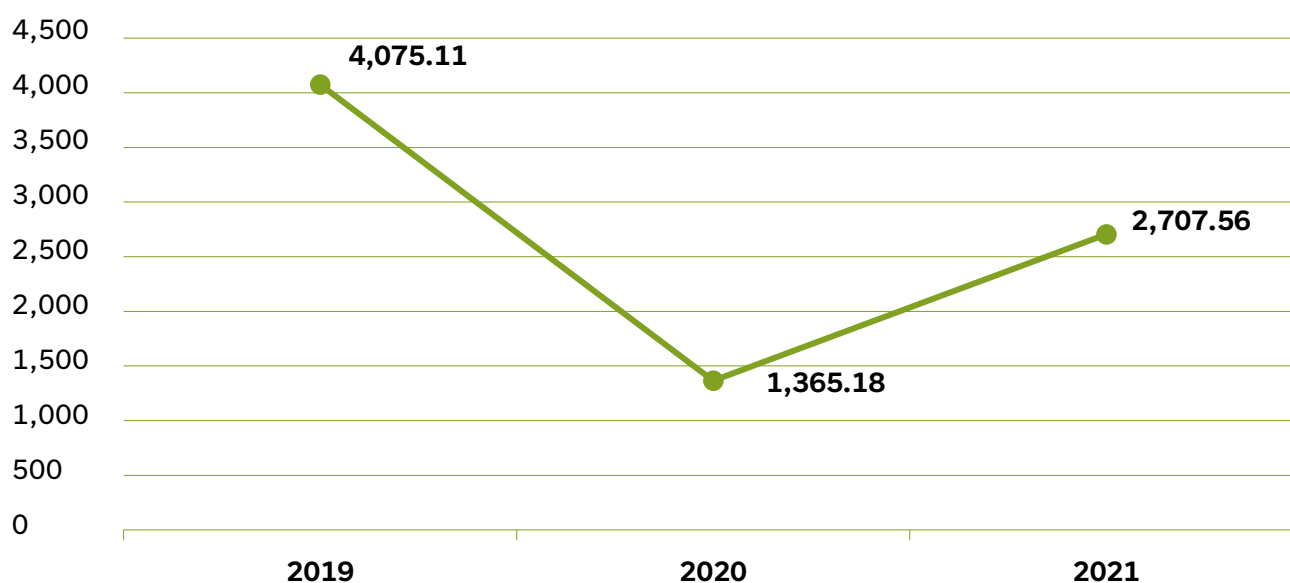
(6) ELW 160601 Lead batteries. This waste was generated in 2021, due to its typology as an electrical and electronic device, the management of this type of waste has had to be done with a different code from that of batteries and accumulators.

(7) ELW 160506 Laboratory chemical products. As a result of the growth of the Resort, the activity of the PortAventura World internal laboratory has increased, carrying out more controls at the level of ornamental waters and in hotel circuits, which has produced an increase in waste in 2021.

	2019	2020	2021
Total visits-overnight stays Resort	6,387,655	1,046,462	3,945,453

PortAventura World's waste management is coordinated throughout the resort.

General evolution of wastes (t)



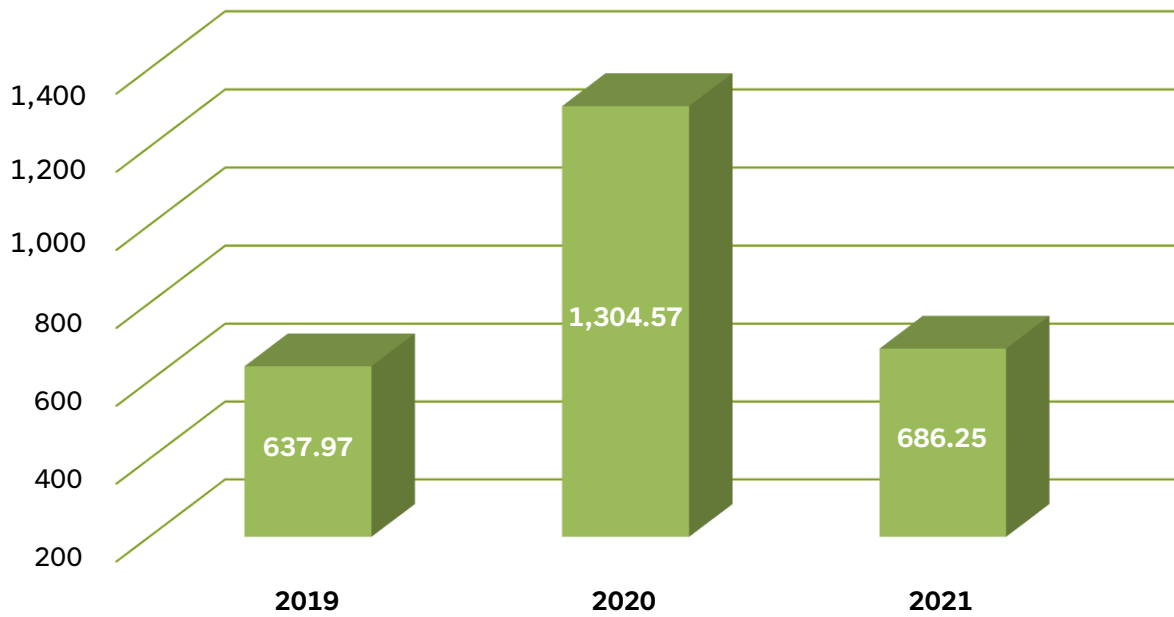
Tonnes rounded to 2 decimal places.

In absolute values, in 2021, the generation of waste has increased by 98.33% compared to 2020, but has decreased by 33.56% compared to 2019, which is for us a representative year in terms of normal activity in the Resort. This reduction in waste is justified by the reduction in the number of visits during the months when the Resort is open to the public.

Consequently, the tonnes of waste per million visits have increased by 7.57% compared to 2019, since the visits received during the year have not been representative as a result of a shorter opening schedule and the current COVID-19 virus.

The following graph shows the evolution of waste generation per million visits during the period between the years 2019-2021.

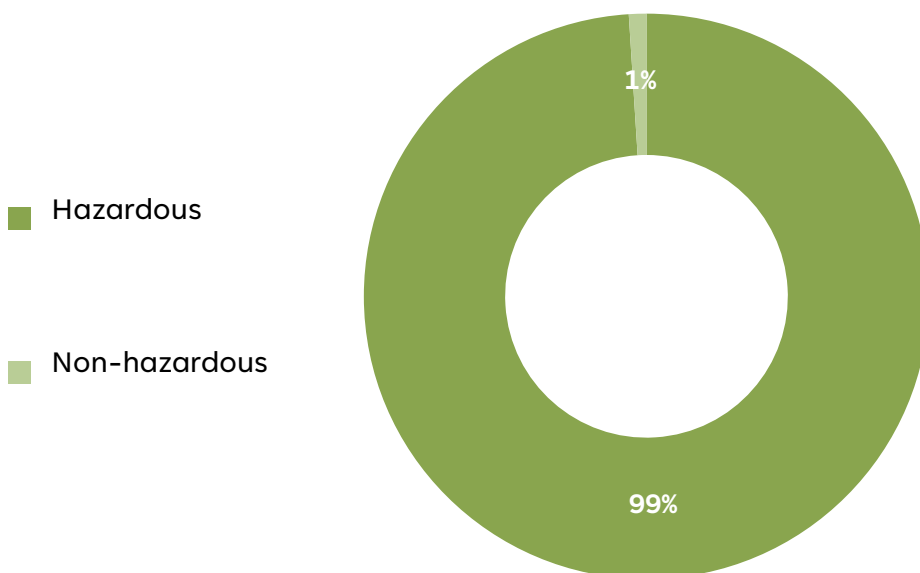
Evolution of waste generation per million visits (t)



Tonnes rounded to 2 decimal places.

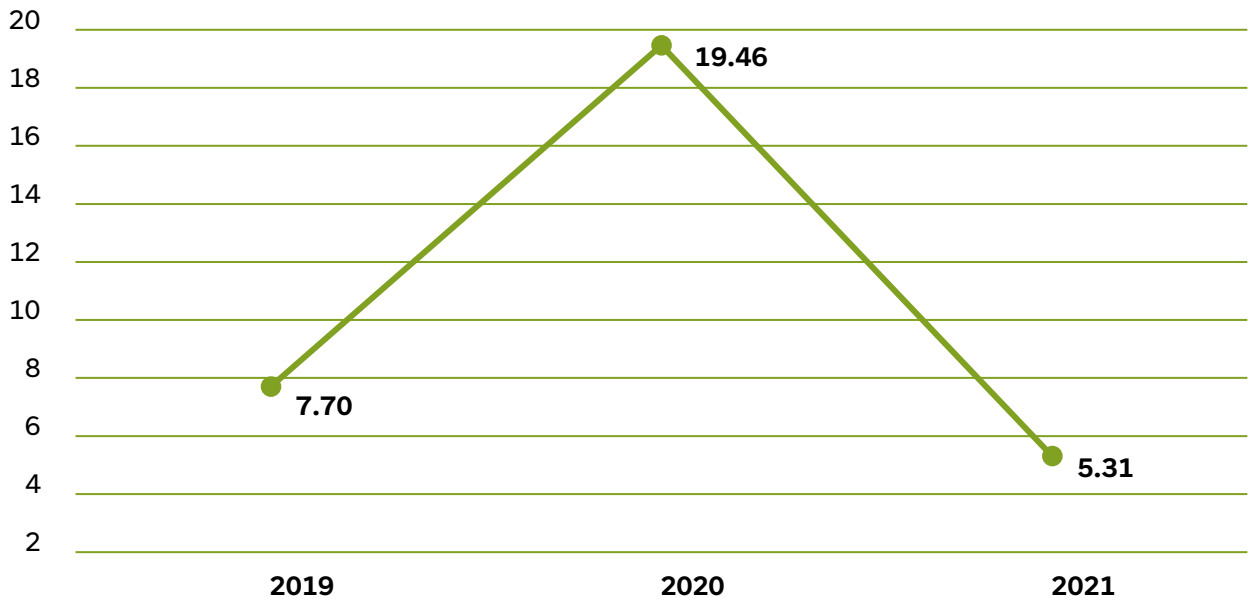
HAZARDOUS WASTE

Waste sorting. Year 2021



In 2021, hazardous waste represented 1% of the total waste generated.

Evolution of hazardous waste per million visits (t)



Tonnes rounded to 2 decimal places.

The tonnes of hazardous waste per million visits have decreased by 72.70% compared to 2020; as well as they have also decreased by 31.03% compared to 2019. The low activity of the park due to the COVID-19 pandemic has marked the entire year, and it cannot be considered a representative value for a normal year, but it is useful for the positive evolution of the years.



MANAGEMENT WAYS

The waste has been managed in the following ways:



EVOLUTION OF WASTE MANAGEMENT ROUTE DISTRIBUTION			
Management	2019	2020	2021
Recovery (%)	91	84	97
Landfill (%)	9	16	3



7.2 WATER

Water is a fundamental element in the operation and theme of our Resort. We are aware that water is an essential resource for life and that it represents a key factor for the socioeconomic, industrial and tourist development of the environment.

PortAventura World's environmental policy establishes the objectives and goals related to water and how our management approach adjusts to public policies and the local context.

WATER CONSUMPTION BY SOURCE AND USE

PortAventura World presents different types of water uses:

- **Water for human consumption.** Drawn from the municipal mains supply, this is used for restaurants and toilets, personal hygiene, cleaning, etc. Much of this use is dependent on our customers' behaviour, as the major consumers of water. Practically 100% is converted into waste water.
- **Recreational and bathing water.** Recreational water is used in water attractions (and ornamental fountains), and is maintained with appropriate residual disinfectant levels in accordance with the Resort's internal criterion. Bathing water is filtered and treated, and only a small percentage is discharged as waste water, after the filters are washed. The water is renewed in accordance with the specific regulations.
- **Regenerated water for irrigation.** Treated waste water subjected to an additional or supplementary treatment process, to give it appropriate quality for irrigation, in our case. The regenerated water use at PortAventura World has been sourced from tertiary treatment at the Vilaseca and Salou Waste Water Treatment Plant (WWTP) since 1996, and is used only for watering plants.
- **Other water for irrigation.** On occasion, water from the Waste Water Treatment Plant (WWTP) is not suitable to water the gardens, either because of conductivity (concentration of salts), biological contamination, or high turbidity. In such situations, alternative sources must be used to ensure the survival of the flora. Such consumption, and hence the corresponding indicators, is entirely dependent on the quality of the water sent by the Vila-seca and Salou WWTP.

m³ Water drawn from the municipal mains	2019		2020		2021	
	Consumption m³/year	m³ per 1,000 visits-overnight stays/year	Consumption m³/year	m³ per 1,000 visits-overnight stays/year	Consumption m³/year	m³ per 1,000 visits-overnight stays/year
WATER FOR HUMAN CONSUMPTION – Total Resort	694,148	108.67	274,598	262.41	596,637	151.22
Total parks	444,156	85.76	171,025	201.81	362,561	113.79
PortAventura Park/PortAventura Caribe Aquatic Park	420,231	102.62	169,888	258.65	362,302	143.43
Ferrari land	23,925	22.07	1,137	5.96	259	0.39
Total hotels	249,343	218.91	103,430	529.95	233,235	319.29
Hotel PortAventura	64,448	298.04	42,386	752.69	48,501	275.04
Hotel El Paso	52,318	164.04	7,108	866.24	28,277	191.45
Hotel Caribe	52,919	250.99	5,118	NA (3)	28,073	421.66
Hotel Gold River	57,386	212.40	37,726	389.13	105,185	485.02
Hotel Mansión de Lucy	1,875	113.30	790	135.93	1,282	97.70
Hotel Colorado Creek ⁽¹⁾	10,397	175.65	10,301	369.37	21,917	199.49
PortAventura Dreams Village⁽²⁾	-----	-----	12	157.8	837	456.13
PortAventura Convention Centre	649	9.33	131	34.86	3	0.11
RECREATIONAL AND BATHING WATER ⁽⁴⁾ – Total Resort	329,448	51.58	126,026	120.43	257,054	65.15
Total parks	174,294	33.65	85,618	101.03	115,801	36.34
PortAventura Park	92,456	24.55	78,154	118.99	67,355	28.27
PortAventura Caribe Aquatic Park	81,838	248.07	7,464	NA	48,446	337.25
Total hotels	155,154	136.22	40,408	207.04	141,253	193.37
Hotel PortAventura	39,708	183.63	28,618	508.20	57,070	323.63
Hotel El Paso	13,446	42.16	375	45.70	11,360	76.91

m ³ Water drawn from the municipal mains	2019		2020		2021	
	Consumption m ³ /year	m ³ per 1,000 visits-overnight stays/year	Consumption m ³ /year	m ³ per 1,000 visits-overnight stays/year	Consumption m ³ /year	m ³ per 1,000 visits-overnight stays/year
Hotel Caribe	90,958	431.41	134	NA (3)	39,304	590.35
Hotel Gold River	10,000	31.52	5,737	59.18	21,263	98.05
Hotel Mansión de Lucy	511	30.88	355	61.08	663	50.53
Hotel Colorado Creek	531	8.97	5,189	186.07	11,593	105.52
	2019		2020		2021	
	Consumption m ³ /year	m ³ per 1,000 m ² landscaped/ year	Consumption m ³ /year	m ³ per 1,000 m ² landscaped/ year	Consumption m ³ /year	m ³ per 1,000 m ² landscaped/ year
OTHER WATER FOR IRRIGATION⁽⁵⁾ – Total Resort	2,134.00	3.18	2,065.59	3.06	525.55	0.78
Total parks	1,774.00	3.64	1,773.80	3.64	378.01	0.77
PortAventura Park/PortAventura Caribe Aquatic Park	1,650.00	3.55	1,649.48	3.55	351.55	0.75
Ferrari land	124.00	5.57	124.32	5.59	26.46	1.19
Total hotels	360.00	2.21	289.79	1.78	146.67	0.90
Hotel PortAventura	103.00	3.04	87.46	2.58	45.27	1.33
Hotel El Paso	188.00	8.94	125.21	5.95	59.10	2.81
Hotel Gold River / Hotel Mansión de Lucy	70.00	1.32	77.12	1.48	42.30	0.81
PortAventura Dreams Village⁽²⁾	-----	-----	2.00	0.55	0.87	0.24
WATER DRAWN FROM THE MUNICIPAL MAINS – Total Resort	1,025,731	160.58	402,689.59	384.81	854,216.55	216.51

m ³	2019		2020		2021	
	Consumption m ³ /year	m ³ per 1,000 m ² landscaped/year	Consumption m ³ /year	m ³ per 1,000 m ² landscaped/ year	Consumption m ³ /year	m ³ per 1,000 m ² landscaped/ year
Reclaimed water for irrigation from WWTP						
REGENERATED WATER FOR IRRIGATION FROM THE WWTP – Total Resort	353,397	526.41	303,731	449.98	381,985	565.15
Total parks	232,593	477.1	204,036	0.42	266,129	544.88
PortAventura Park/PortAventura Caribe Aquatic Park	217,944	468.42	187,698	403.41	247,910	531.80
Ferrari land	14,649	658.59	16,338	734.54	18,219	819.09
Total hotels	106,701	654.03	75,125	460.48	95,739	586.83
Hotel PortAventura	21,810	643.08	11,400	336.13	15,473	456.21
Hotel El Paso	26,409	1255.3	18,523	880.44	19,388	921.55
Hotel Caribe	40,020	1229.95	34,860	1071.36	48,085	1,477.81
Hotel Gold River / Hotel Mansión de Lucy	18,462	353.31	10,342	197.92	12,793	244.83
Hotel Colorado Creek ⁽¹⁾	0	0.00	0	0	0	0.00
PortAventura Dreams Village⁽²⁾	-----	-----	298	81.46	298	81.47
PortAventura Convention Centre	14,103	682.16	24,272	1174.04	19,819	958.65

Figures rounded to 2 decimals place.

(1) The Colorado Creek Hotel began activity in July 2019.

(2) PortAventura Dreams Village began its activity in January 2020.

(3) The Hotel Caribe has not received visits during the year 2020, and the value of the indicator consumption/visits-overnight stays is not applicable.

(4) In the Ferrari Land Park and in the PortAventura Convention Centre, neither recreational nor swimming water is consumed.

(5) The Caribe Hotel, the Colorado Creek Hotel and the PortAventura Convention Centre do not consume other water for irrigation.

Total water consumption (m³ of water throughout the Resort)		2019	2020	2021
Consumption of water from the municipal mains for human consumption, bathing and recreational use at PortAventura World (m ³ /year)		1,023,596	400,624	853,691
Total consumption of water from the municipal mains for human consumption, bathing and recreational use in PortAventura World (m ³ per 1,000 visits-overnight stays/year)		160.25	382.84	216.37
Total consumption of water for irrigation (m ³ /year)	Other water for irrigation	2,134.00	2,065.59	525.55
	Water from the WWTP	353,397	303,731	381,985
Total consumption of water for irrigation (m ³ per 1,000 m ² landscaped/year)	Other water for irrigation	3.18	3.06	0.78
	Water from the WWTP	529.41	449.98	565.15

	2019	2020	2021
Total visits-overnight stays Resort	6,387,655	1,046,462	3,945,453
Total parks	5,179,104	847,461	3,186,342
PortAventura Park	3,765,301	656,832	2,382,416
Port Aventura Caribe Aquatic Park	329,896	0	143,649
Ferrari land	1,083,907	190,629	660,277
Total hotels	1,139,002	195,168	730,479
Hotel PortAventura	216,239	56,313	176,343
Hotel El Paso	318,928	8,206	147,701
Hotel Caribe	210,839	0	66,578
Hotel Gold River	317,257	96,949	216,869
Hotel Mansión de Lucy	16,549	5,812	13,122

	2019	2020	2021
Total visits-overnight stays Resort	6,387,655	1,046,462	3,945,453
Hotel Colorado Creek	59,190	27,888	109,866
PortAventura Dreams Village	-----	75	1,835
PortAventura Convention Centre	69,549	3,758	26,797

	2019	2020	2021
Landscaped areas m² - Total Resort	671,336	674,994	675,894
Total parks	487,517	487,517	488,417
PortAventura Park	446,255	446,255	447,155
Port Aventura Caribe Aquatic Park	19,019	19,019	19,019
Ferrari land	22,243	22,243	22,243
Total hotels	163,145	163,145	163,145
Hotel PortAventura	33,915	33,915	33,915
Hotel El Paso	21,038	21,038	21,038
Hotel Caribe	32,538	32,538	32,538
Hotel Gold River	46,712	46,712	46,712
Hotel Mansión de Lucy	5,542	5,542	5,542
Hotel Colorado Creek	23,400	23,400	23,400
PortAventura Dreams Village	-----	3,658	3,658
PortAventura Convention Centre	20,674	20,674	20,674

WATER CATEGORISED BY INTENDED USE

Depending on their final destination, the waters of PortAventura World can be classified as:

- Waste water
- Stormwater

The entire PortAventura World Resort has been built on a separate network project that allows the different types of water to be channelled to the most appropriate final destination.

WASTE WATER

Discharges of waste water generated at the Resort are centralized at two discharge points, both destined for the Vila-Seca and Salou Waste water Treatment Plant (WWTP)., in which a tertiary treatment is completed that regenerates the water for use as irrigation water in the Resort, and even in some parks and gardens in the municipality of Vila-seca.

Annually, controls are carried out on the quality of the water discharged in the four existing collectors: Vila-seca, General (Salou), Hotel El Paso and Hotel Caribe. This allows us to have a set of data to promote improvement actions if necessary.

The results of the analyses linked to the self-monitoring for the last 3 years are shown below. In 2021, it has not been held at Hotel Caribe as it has a reduced operating schedule and is considered unrepresentative.

Vila-Seca sewer (30/07/2021)	2019	2020	2021
Suspended matter (mg/l)	383	120	104
IM (Equitox/ m ³)	<3.0	<3.0	<3.0
COD (not decanted) (mg O ₂ /l)	720	104	210
COD (decanted 2h) (mg O ₂ /l)	232	85	154
Conductivity at 25°C (µs/cm)	1,553	3,950	2,673
pH at 25°C (u)	6.8	7.5	6.6
Chlorides (mg/l)	107.0	779.5	657.5
Kjeldahl Nitrogen (mg/l)	57.1	2.6	15.5
Total Phosphorus (mg/l)	7.2	3.8	7.45
Ammonium (mg/l)	18.6	<0.5	11.7
Oils and fats (mg/l)	2.0	1.4	1.3

Salou General sewer (30/07/2021)	2019	2020	2021
Suspended matter (mg/l)	63	22	384
IM (Equitox/ m ³)	<3.0	<3.0	4.4
COD (not decanted) (mg O ₂ /l)	42	<10	419
COD (decanted 2h) (mg O ₂ /l)	twenty	<10	303
Conductivity at 25°C (µs/cm)	1,446	2020	1,838
pH at 25°C (u)	7.1	7.3	7.0
Chlorides (mg/l)	232.0	213.5	249.0
Kjeldahl Nitrogen (mg/l)	26.8	1.2	60.6
Total Phosphorus (mg/l)	2.2	1.7	8.65
Ammonium (mg/l)	26.9	<0.5	55.7
Oils and fats (mg/l)	1.3	<0.50	3.4

Hotel El Paso sewer (08/07/2021)	2019	2020 ⁽¹⁾	2021
Suspended matter (mg/l)	291	-----	188
IM (Equitox/ m ³)	6.3	-----	<3.0
COD (not decanted) (mg O ₂ /l)	612	-----	599
COD (decanted 2h) (mg O ₂ /l)	304	-----	295
Conductivity at 25°C (µs/cm)	1,559	-----	2,684
pH at 25°C (u)	6.5	-----	6.9
Chlorides (mg/l)	106.0	-----	609.5
Kjeldahl Nitrogen (mg/l)	8.4	-----	13.3
Total Phosphorus (mg/l)	8.5	-----	1.70
Ammonium (mg/l)	0.8	-----	3.4
Oils and fats (mg/l)	2.0	-----	8.8

Hotel Caribe sewer	2019	2020 ⁽¹⁾	2021 ⁽²⁾
Suspended matter (mg/l)	195	-----	-----
IM (Equitox/ m ³)	4.6	-----	-----
COD (not decanted) (mg O ₂ /l)	552	-----	-----
COD (decanted 2h) (mg O ₂ /l)	145	-----	-----
Conductivity at 25°C (µs/cm)	1,527	-----	-----
pH at 25°C (u)	6.6	-----	-----
Chlorides (mg/l)	174.5	-----	-----
Kjeldahl Nitrogen (mg/l)	6.1	-----	-----
Total Phosphorus (mg/l)	5.3	-----	-----
Ammonium (mg/l)	3.8	-----	-----
Oils and fats (mg/l)	1.1	-----	-----

(1) In 2020, no self-controls were carried out at the Hotel El Paso and Hotel Caribe collectors as these two hotels remained inactive as a result of the COVID-19 pandemic.

(2) In 2021, it has not been carried out at Hotel Caribe as it has a reduced operating schedule and is considered unrepresentative.

STORMWATER

Traditionally, and due to the torrential regime of the Mediterranean, rainwater constitutes a testimonial part in water management. However, the resort has a water network that separates waste water from rainwater.



7.3 ENERGY MANAGEMENT

Along with water, electricity and natural gas are the main natural resources consumed at PortAventura World.

ELECTRICITY

PortAventura World has an energy management system that is controlled from a central computer. This system centralizes programmable logic controllers (PLC), responsible for controlling the main energy consumers distributed throughout the park facilities and hotels.

We also have resources to save electricity and thus mitigate our footprint. Some of the resources we use are low consumption/LED light bulbs, electrical consumption control through a computer system, etc. In addition, the hotels also include a connection key to have energy in the room, disconnection of the air conditioning when opening the window, etc.

ORIGIN OF ELECTRICITY

Since 2016, 100% of the supply comes exclusively from renewable energy sources without CO₂ emissions, with Guarantee of Origin (GdO).

Electricity consumption in 2021 represents 82.21% of total energy consumption at PortAventura World.

ORIGIN OF NATURAL GAS

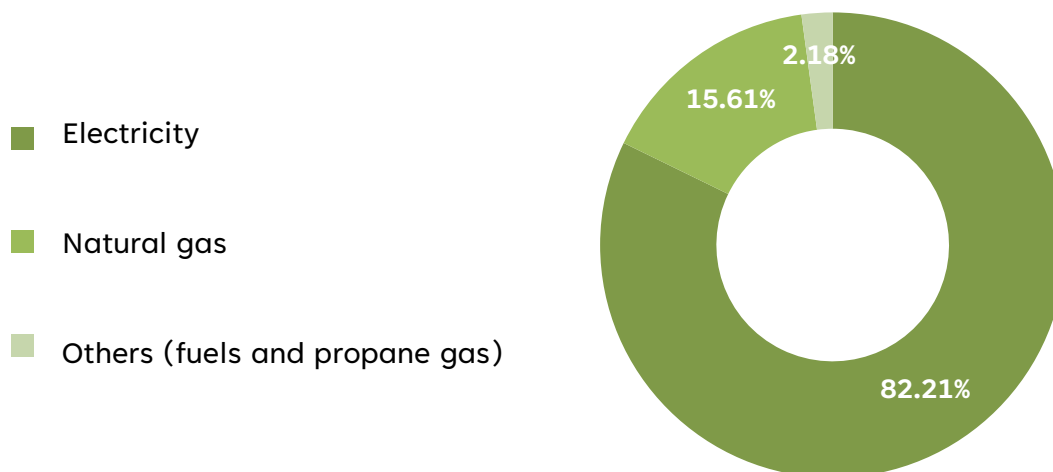
This type of energy is mainly used in our centres for the production of domestic hot water and in the kitchens, as well as for heating. This represents 15.61% of the total energy consumption throughout the Resort.



ORIGIN OF OTHER ENERGIES

This concept encompasses the energy that comes from fuel (both those in fixed tanks and the consumption of the fleet of vehicles that are not owned by PortAventura World, but of which management control is controlled), and also from the energy of propane gas. This represents 2.18% of total energy consumption.

Percentage of energy consumption in PortAventura World in 2021



Figures rounded to 2 decimals place.

Total direct energy consumption (electricity, gas and other energies)

MWh	2019		2020		2021	
	Consumption MWh/year	MWh per 1,000 visits-overnight stays/year	Consumption MWh/year	MWh per 1,000 visits-overnight stays/year	Consumption MWh/year	MWh per 1,000 visits-overnight stays/year
ELECTRICITY - Total Resort	40,858.82	6.4	17,568.45	16.79	31,329.84	7.94
Total parks	25,566.58	4.94	11,968.62	14.12	19,437.06	6.1
PortAventura						
Park/PortAventura	22,031.64	5.38	10,495.85	15.98	16,631.96	6.58
Caribe Aquatic Park						
Ferrari land	3,534.94	3.26	1,472.78	7.73	2,805.10	4.25
Total hotels	13,586.76	11.93	4,855.70	24.88	11,042.01	15.12
Hotel PortAventura	2,828.98	13.08	1,532.58	27.22	2,689.18	15.25
Hotel El Paso	2,955.49	9.27	339.82	41.41	2,065.70	13.99

MWh	2019		2020		2021	
	Consumption MWh/year	MWh per 1,000 visits-overnight stays/year	Consumption MWh/year	MWh per 1,000 visits-overnight stays/year	Consumption MWh/year	MWh per 1,000 visits-overnight stays/year
Hotel Caribe	3,075.99	14.59	594.45	NA (2)	1,641.83	24.66
Hotel Gold River	3,495.34	11.02	1,773.00	18.29	3,012.58	13.89
Hotel Mansión de Lucy	278.32	16.82	138.23	23.78	241.15	18.38
Hotel Colorado Creek (1)	952.65	16.09	477.63	17.13	1,391.58	12.67
PortAventura Dreams Village⁽¹⁾	-----	-----	1.33	17.67	23.24	12.67
PortAventura Convention Centre	1,705.48	24.52	742.81	197.66	827.53	30.88
NATURAL GAS Total Resort⁽³⁾	8,195.14	1.28	2,322.87	2.22	5,950.55	1.51
Total parks	1,581.69	0.31	414.85	0.49	693.80	0.22
PortAventura/ PortAventura Caribe Aquatic Park	1,516.49	0.37	405.9	0.62	669.79	0.27
Ferrari land	65.2	0.06	8.95	0.05	24.01	0.04
Total hotels	6,609.25	5.8	1,902.66	9.75	5210.93	7.13
Hotel PortAventura	1,526.69	7.06	1,013.03	17.99	1269.22	7.20
Hotel El Paso	1,303.91	4.09	34.53	4.21	852.39	5.77
Hotel Caribe	1,294.65	6.14	2.08	NA (2)	451.92	6.79
Hotel Gold River / Hotel Mansión de Lucy	2,106.47	6.31	704.89	6.86	2114.40	9.19
Hotel Colorado Creek ⁽¹⁾	377.54	6.38	148.13	5.31	523.01	4.76
PortAventura Convention Centre	4.21	0.06	5.37	1.43	45.82	1.71

MWh	2019		2020		2021	
	Consumption MWh/year	MWh per 1,000 visits-overnight stays/year	Consumption MWh/year	MWh per 1,000 visits-overnight stays/year	Consumption MWh/year	MWh per 1,000 visits-overnight stays/year
OTHER ENERGIES Total Resort⁽⁶⁾	1,135.40	N/A	461.88	N/A	830.18	N/A
Fuels	1,016	N/A	452	N/A	756	N/A
Diesel B	31.52 ⁽⁴⁾	N/A	0	N/A	0	N/A
Diesel A ⁽⁵⁾	650.38 ⁽⁴⁾	N/A	289.87	N/A	470.58	N/A
Gasoline ⁽⁵⁾	333.98 ⁽⁴⁾	N/A	162.25	N/A	285.51	N/A
Propane gas	119	N/A	9.88	N/A	74.09	N/A
ENERGY CONSUMPTION Total Resort	50,189.24	7.86	20,353.34	19.45	38,110.57	9.66

Figures rounded to 2 decimals place.

(1) The Hotel Colorado Creek began its activity in July 2019 and PortAventura Dreams Village began its activity in January 2020.

(2) The Hotel Caribe did not receive visits during the year 2020 and the value of the indicator consumption/visits-overnight stays was not applicable.

(3) PortAventura Dreams Village does not use natural gas resources.

(4) Regarding other energies, in 2019, it must be taken into account that one of the internal gas stations has been closed from 12/27/18 to 04/23/19, from 08/07/19 to 14/ 08/19 and from 12/11/19 to 12/16/19 and, during its closure, there were restrictions on the use of certain users.

(5) As of 2019, the fuel consumption of the fleet of vehicles that are not owned by PortAventura World, but of which it does have management control, is included. The calculation has been made by distributing the diesel and gasoline of these vehicles according to the distribution by autonomous community, type and fuel corresponding to the year 2018 published by the General Directorate of Traffic (DGT).

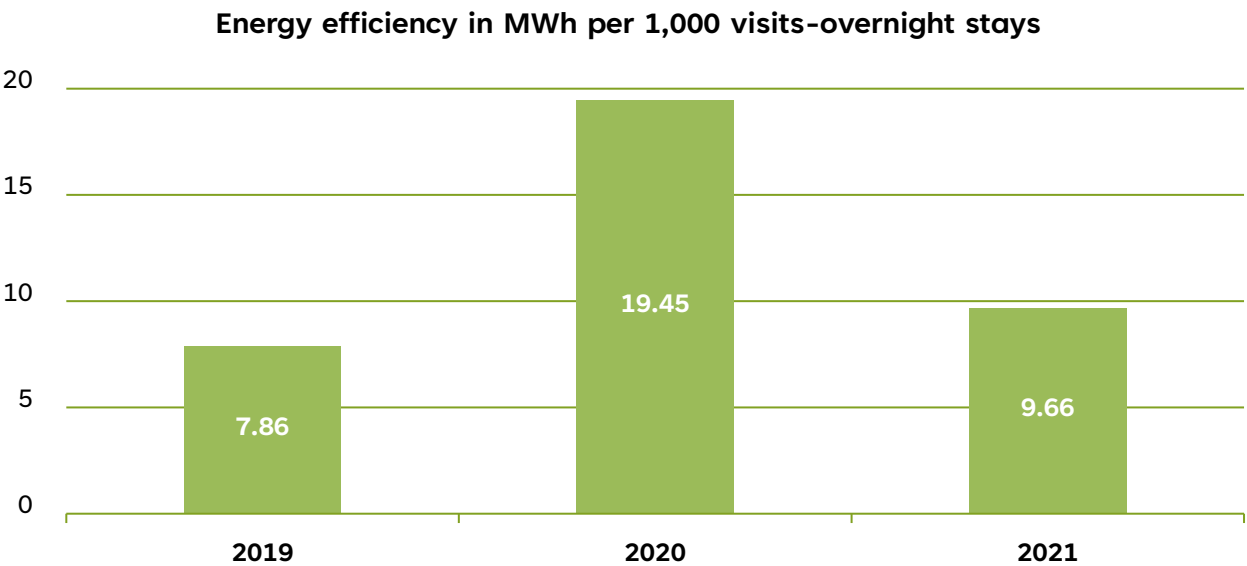
(6) The Other energy consumption indicator per number of visitors is not representative due to the high number of visitors received by the Resort.

Note: The data related to visits and overnight stays at the Resort can be found on page number 64.

The savings in the consumption of natural gas and electricity are the result of the intensification of the tasks dedicated to the monitoring and control of consumption, the plan to renew LED-type lights and the change of capacitor banks to improve energy efficiency.

ENERGY EFFICIENCY

The energy efficiency of the entire Resort is the sum of all energy consumption (electricity, natural gas, fuel and propane gas) in MWh/year.



7.4 EMISSIONS TO THE ATMOSPHERE

We pay attention to monitoring emissions into the atmosphere, although they are not relevant to our activity and their environmental impact on air quality is limited. We carry out controls of the emitting sources every 5 years and those other corresponding controls in accordance with the current applicable regulations, Decree 139/2018 on the regimes of atmospheric environmental intervention of the establishments where potentially polluting activities of the atmosphere are carried out.

The emission points are diesel train locomotives, natural gas heating or hot water boilers, carpentry and painting, motor vehicles and natural gas combustion in the Temple of Fire and FiestAventura.

The last voluntary measurement was carried out in 2018, without having to take corrective measures in this regard.

It is considered that the indicator of total annual emissions into the air of SO₂, NO_x and PM derived from the direct consumption of liquid fuels used for transport is not relevant if we take into account all the activity of PortAventura World.



7.5 CARBON FOOTPRINT / GREENHOUSE GAS EMISSIONS

At PortAventura World, the carbon footprint of its activity is calculated, and greenhouse gas emissions expressed in tonnes of CO₂ are quantified. The calculations are based on the *Guia pràctica per al càlcul d'emissions de gasos amb efecte d'hivernacle (GEH)* of the Catalan Office for Climate Change, according to the current annual version: '*Font per al càlcul dels factors d'emissió: guia pràctica per al càlcul d'emissions de gasos amb efecte d'hivernacle (GEH)*'.

This calculation includes the following categories:

- **Direct emissions (scope 1):** fixed source fuel consumption, mobile source fuel consumption, and fugitive emissions.
- **Indirect emissions associated with electricity purchased (scope 2):** consumption of electrical energy.
- **Indirect emissions (scope 3):** employees transport to and from work and on business trips, and services used by the organisation, including waste processing (municipal and equivalent), and water consumption.

CARBON FOOTPRINT/GREENHOUSE GAS EMISSIONS	2019 ⁽¹⁾	2020 ⁽²⁾	2021 ⁽³⁾
Total annual emissions of greenhouse gases expressed in equivalent tonnes of CO ₂	7,838	4,351	7,705
Direct greenhouse gas emissions (scope 1)	6,014	3,019	5,155
Indirect greenhouse gas emissions associated with electricity (scope 2)	0	0	0
Other indirect greenhouse gas emissions (scope 3)	1,824	1,332	2,551
Annual greenhouse gas emissions expressed in equivalent tonnes of CO ₂ per 1,000 visits-overnight stays and year ⁽¹⁾	1.23	4.16	1.95

Figures rounded to 2 decimals place.

Since 2016, the indirect emissions associated with electricity consumption are 0 tonnes of CO₂/kWh due to the fact that 100% of the supply comes exclusively from renewable energy sources without CO₂ emissions, with Guarantee of Origin (GdO).

(1) The actual data on natural gas consumption for the month of December 2019, shown in the previous environmental statement and estimated from meter readings, is updated.

(1) In 2019, the fuel consumption of vehicles managed by PortAventura World is included. The calculation has been made by distributing the diesel and gasoline of these vehicles according to the distribution by

autonomous community, type and corresponding fuel published by the DGT according to the version in force. For 2020 this criterion has also been used.

(2) In 2020, indirect emissions from commuting transportation of personnel and business trips are included.

(3) To calculate year 2021, the emission factors of CH₄ and N₂O gases from the categories of combustion in fixed sources and combustion in mobile sources are incorporated.

To calculate greenhouse gas emissions for the period 2021, the emissions factor calculation source used was "*Guia pràctica per al càlcul d'emissions de gasos amb efecte d'hivernacle (GEH)*" from Oficina Catalana de Canvi Climàtic, April 2022 version. To calculate greenhouse gas emissions corresponding to business travel by plane, the emissions factor calculation source was "*ICAO Carbon Emissions Calculator*".

In 2022 we will offset 100% of the scope 1 and 2 greenhouse gas emissions generated in 2021 by the development of our activity, calculated according to the emission factors of the *Guia pràctica per al càlcul d'emissions de gasos amb efecte d'hivernacle (GEH)* of the Catalan Office for Climate Change, according to the April 2022 version.

Emissions from 2021 will be offset through the purchase of carbon credits intended to protect and conserve one of the most important migration corridors on our planet. Located on the coast of Guatemala and with an area of 54,000 hectares, the project is located in the forest area of the corridor, the natural habitat of 10% of the known bird species in the world. Climate finance works to protect the remaining forests of Guatemala's Conservation Coast region by addressing the drivers of deforestation through effective law enforcement, land use planning, education, opportunities economic and sustainable agroforestry initiatives. There are also important benefits for biodiversity. More than 400 species of birds have been documented in the project area and 120 species depend on the corridor to support their long journeys. The Guatemala Conservation Coast project protects the habitat of a large number of mammals and reptiles, including 30 high conservation value (HCV) species.



7.6 BIODIVERSITY

m ² constructed area	2019	2020	2021
Total m² constructed area	488,017.75	491,418.29	492,481.94
PortAventura Park	264,649.58	265,248.08	266,311.73
Port Aventura Caribe Aquatic Park	5,832.36	5,832.36	5,832.36
Ferrari Land	58,872.46	58,872.46	58,872.46
Hotel PortAventura	33,839.91	33,839.91	33,839.91
Hotel El Paso	26,827.69	26,827.69	26,827.69
Hotel Caribe	30,708.47	30,708.47	30,708.47
Hotel Gold River / Hotel Mansión de Lucy	36,851.04	36,851.04	36,851.04
PortAventura Convention Centre	18,350.39	18,350.39	18,350.39
Hotel Colorado Creek	10,295.60	13,097.64	13,097.64
PortAventura Dreams Village	1,790.25	1,790.25	1,790.25

Figures rounded to 2 decimals place.

Sealed surface	2019	2020	2021
Total m²	2,029,337.00	2,029,337.00	2,029,337.00
m ² sealed	1,001,179.75	1,007,599.19	1,007,426.96
Percentage of m ² sealed	49.34%	49.65%	49.64%

Figures rounded to 2 decimals place.

The sealed area is the sum of the m² built, the roads, the car parks and the water surface of the total Resort.

7.7 EFFICIENCY IN THE CONSUMPTION OF SOME MATERIALS

Materials	environmental aspect	2019	2020	2021
Chemical products in the main pool and lake maintenance (kg)	Consumption of chemical products	673,927.80	360,478.99	523,576.00
Light fittings (units)	Emission of luminous flux into the atmosphere	18,413.00	6,228.00	9,763.00
Bags for the sale of products at Resort stores (units) ⁽¹⁾	Consumption of natural resources	572,966.00	165,263.00	145,093.00 ⁽²⁾
Cleaning products (kg)	Consumption of chemical products	99,311.80	49,550.71	93,579.37
Oils and lubricants (kg)	Consumption of chemical products	7,805.89	3,750.50	6,294.90
Office paper (kg)	Consumption of natural resources	19,230.80	5,626.00	7,635.00

Figures rounded to 2 decimals place.

(1) In 2020, the consumption of bags of the new references consumed is included.

(2) In 2021. Plastic bags are not provided for the sale of products in stores.



8. LEGAL REQUIREMENTS REGARDING THE ENVIRONMENT AND INDUSTRIAL SAFETY

One of the principles of PortAventura World's Environmental Policy is to ensure compliance with the legal requirements regarding the environment and other voluntary requirements to which it subscribes.

Through an external company specialized in legal regulations, PortAventura World has updated the identification and evaluation of compliance with the applicable legal requirements and other requirements that we voluntarily subscribe to. This identifies the regulations applicable to the organisation and has its scope in environmental and industrial safety matters at the international, European, state, regional and local levels, as well as other requirements that are managed and controlled through a computer application.

Annually, a group of experts carry out the evaluation of legal compliance with the aim of guaranteeing that the company complies with the applicable legal requirements. Likewise, according to the regulatory periodicity, the company is subject to audits carried out by accredited control entities that verify strict compliance with environmental and industrial safety regulations.

In the year 2021, the regulations have been affected in the first half of the year by coexistence with the COVID-19 virus. However, PortAventura World has dealt with the situation and continues to make efforts to coexist with its presence. With the start of the second half of the year, the regulatory framework at the environmental and industrial safety level has been activated, and PortAventura World has been adapting all areas of the Resort to the new regulations drawn up. Below are some of the most important legal requirements and the actions that PortAventura World has implemented for its success in compliance or current and effective management of them:

Vector	Legal reference	Legal requirements
Environmental authorization	Law 20/2009, of December 4, on prevention and environmental control of activities.	The PortAventura World environmental authorization resolution is available on July 31, 2013, and its subsequent non-substantial change resolutions. For example: Angkor (2014) or the expansion of the Hotel Gold River (2014), Hotel Mansión de Lucy (2015), the inauguration of Ferrari Land (2016), the Hotel Colorado Creek (2019) and PortAventura Dreams Village (2021). The LaLiga 29's Restaurant (2021) has no environmental impact and will be controlled in the next periodic control to be carried out by PortAventura World.
Water consumption	Royal Legislative Decree 1/2001, of July 20, which approves the revised text of the Water Law.	The reclaimed water concession is available through which the concession is granted for the use of reclaimed water from the Vila-seca and Salou WWTP for the irrigation of green areas in parks and hotels.
Discharge of	Decree 130/2003, of May 13,	The 2013 environmental authorization is available,

Vector	Legal reference	Legal requirements
water	which approves the Regulation of Public Sanitation Services.	which includes the waste water discharge permit.
Noises	Decree 176/2009 of November 10, which approves the Regulation of Law 16/2002 of June 28, on protection against noise pollution that is adapted in its annexes.	Voluntary controls of noise emissions are carried out every three years, to verify compliance with the requirements set forth in the applicable regulations.
Fluorinated greenhouse gases	Regulation (EU) No. 517/2014 of the European Parliament and Council, of April 16, 2014, on fluorinated greenhouse gases and repealing Regulation (EC) No. 842/2006.	Leak checks are carried out on equipment containing fluorinated gases according to the frequency established in the Regulation based on equivalent tonnes of CO ₂ .
Light pollution	Decree 190/2015, of August 25, implementing Law 6/2001, of May 31, on environmental planning of lighting for the protection of the night environment.	At the end of a new project that includes outdoor lighting installations, the compliance of said luminaires with the applicable regulations is verified, as well as with the prescriptions established in the environmental authorization, and said compliance is evidenced through the issuance of a certificate by the Engineering responsible for the execution of the project. As for Ferrari Land, a specific control of the light vector has been carried out with a favourable report. We are currently in the process of managing the specific control of the light vector of the PortAventura World resort.
Waste	Law 22/2011, of July 28, on waste and contaminated soil. Royal Decree 553/2020, of June 2, which regulates the transfer of waste within the territory of the State.	Waste is managed and measures are promoted to prevent its generation and mitigate the adverse impacts on human health and the environment associated with its generation and management, prioritizing the recovery of waste. Previous contracts and notifications with the corresponding waste managers are available.
Food waste	Law 3/2020, of March 11, on the prevention of food losses and waste.	In compliance with Law 3/2020 for the prevention of food losses and waste, there is a Criteria Manual for the control of food waste through which compliance with the requirements derived from said regulations is monitored.
Energy Efficiency –	Royal Decree 56/2016, of February 12, which transposes	The last energy audit carried out to validate regulatory compliance corresponding to the year

Vector	Legal reference	Legal requirements
energy audits	Directive 2012/27/EU of the European Parliament and of the Council, of October 25, 2012, regarding energy efficiency, in relation to energy audits, accreditation of service suppliers and energy auditors and promotion of energy supply efficiency.	2020 was carried out in January 2021. An action plan for improvement focused on energy savings for the period 2020-2024 has been extracted from said audit.
Environmental Quality Standard	Resolution TES/2807/2016, of November 28, which establishes the environmental criteria for granting the environmental quality guarantee badge to hotel establishments.	In 2021, the following Environmental Quality Guarantee Distinctions are available for: Hotel PortAventura Hotel El Paso Hotel Caribe Hotel Gold River Hotel Mansión de Lucy
Energy efficiency – certification of energy efficiency in buildings	Royal Decree 564/2017, of June 2, which modifies Royal Decree 235/2013, of April 5, which approves the basic procedure for the certification of the energy efficiency of buildings. Royal Decree 390/2021, of June 1, which approves the basic procedure for the certification and energy efficiency of buildings.	All buildings within the scope of application of Royal Decree 564/2017 have the corresponding energy efficiency certificate. With the entry into force of the new Royal Decree, PortAventura World is in the process of identifying the buildings affected by Royal Decree 390/2021 in order to obtain the corresponding energy efficiency certificate.
Self-protection plan	Decree 30/2015, of March 3, which approves the catalogue of activities and centres required to adopt self-protection measures and sets the content of these measures.	Approved by Civil Protection on October 8, 2013. In 2017, the PAU was reviewed and on 09/19/2019 it was approved by Civil Protection.
Fire protection	Royal Decree 513/2017, of May 22, which approves the Regulation of fire protection installations.	The maintenance of the fire protection installations and the quarterly, semi-annual and annual revision of the fire protection systems are carried out, as well as the rest of the multiannual reviews for all existing fire protection equipment.
Pressure equipment	Royal Decree 809/2021, of September 21, which approves the Regulation of pressure equipment and its	The existing pressure equipment in the facilities is registered and its periodic inspections are carried out based on the categorization they have according to the Royal Decree of application.

Vector	Legal reference	Legal requirements
	complementary technical instructions	Maintenance of all equipment is also carried out.
Thermal facilities	<p>Royal Decree 238/2013, of April 5, which modifies certain articles and technical instructions of the Regulation of Thermal Installations in Buildings, approved by Royal Decree 1027/2007, of July 20.</p> <p>Royal Decree 178/2021, of March 23, which modifies Royal Decree 1027/2007, of July 20, which approves the Regulation of Thermal Installations in Buildings.</p>	<p>The energy efficiency of the systems of the air conditioning installations of nominal useful power by sum of installed powers equal to or greater than 70 kW is inspected.</p> <p>Thermal installations in heating and domestic hot water systems with a power equal to or greater than 70 kW are inspected.</p> <p>The maintenance continues to be carried out under the same periodicities already marked in the previous Royal Decree, taking into account that it has not been a point that has been modified with the entry into force of the new one.</p>
High voltage	Royal Decree 337/2014, of May 9, which approves the Regulation on technical conditions and safety guarantees in high-voltage electrical installations and its Complementary Technical Instructions ITC-RAT 01 to 23.	There is legalization of the high voltage facilities, and the corresponding inspections are carried out.
Hazardous goods	Royal Decree 97/2014, of February 14, which regulates the transport operations of hazardous goods by road in Spanish territory.	There is a Security Advisor, the annual report is delivered to the competent body in the first quarter of the year. The annual technical visit is carried out with its corresponding report.
Chemical storage	Royal Decree 656/2017, of June 23, which approves the Chemical Products Storage Regulation and its Complementary Technical Instructions MIE APQ 0 to 10.	The existing chemical product warehouses in the facilities are legalized. All of them pass their corresponding annual reviews and five-year regulatory inspections. If a new storage of chemical products is required, it will be carried out in accordance with the provisions of this Royal Decree.
Registration of pesticide and biocide establishments and services	Royal Decree 285/2021, of April 20, which establishes the conditions of storage, marketing, import or export, official control and authorization of tests with	The use of phytosanitary products by personnel assigned to these functions is verified by the company through a platform that the personnel who use the products have regulatory accreditation and use personal protection

Vector	Legal reference	Legal requirements
	phytosanitary products, and modifies Royal Decree 1311/2012, of April 14 September, which establishes the method of action to achieve a sustainable use of plant protection products.	equipment. The warehouse intended for the storage of phytosanitary products is legalized and passes its corresponding regulatory reviews and inspections.
Water for human consumption	Royal Decree 902/2018, of July 20, which modifies Royal Decree 140/2003, of February 7, which establishes the health criteria for the quality of water for human consumption, and the specifications of the analysis methods of Royal Decree 1798/2010, of December 30, which regulates the exploitation and marketing of natural mineral waters and bottled spring waters for human consumption, and of Royal Decree 1799/2010, of December 30, which regulates the process of elaboration and commercialization of prepared waters packaged for human consumption.	Control analyses of water for human consumption are carried out according to the parameters and in accordance with the provisions of art. 18 of Royal Decree 140/2003.
Atmospheres	Decree 139/2018, of July 3, on the atmospheric environmental intervention regimes of establishments where potentially atmospheric polluting activities are carried out.	The emitting sources of PortAventura World, based on their potential to pollute the atmosphere, are categorized as having no assigned group within the catalogue of activities potentially polluting the atmosphere (CAPCA-2010). All the outbreaks are registered in the electronic registry of Government of the Generalitat de Catalunya.
EMAS	Regulation (EU) 2018/2026 of the Commission, of December 19, 2018, which modifies Annex IV of Regulation (EC) No. 1221/2009 of the European Parliament and of the Council, regarding the voluntary participation of organisations in a community environmental management and audit scheme	Modification of Annex IV of Regulation (EC) No. 1221/2009, on environmental reporting.


Vector	Legal reference	Legal requirements
	(EMAS).	
Hazardous goods	Amended text of Annexes A and B of the European Agreement on the International Carriage of hazardous Goods by Road (ADR 2021) with the Amendments adopted during the 105th, 106th, 107th Sessions of the Working Group on Transport of Hazardous Goods of the United Nations Economic Commission for Europe (UNECE).	Compliance with the requirements regarding the international transport of hazardous goods by road (ADR) contained in this standard, both those actions necessary to send a merchandise before carrying out the transport itself (classification, choice of containers, generation of the documentation, controls prior to the departure of the expedition, etc.), such as those referring to circulation and choice of vehicle, driving, choice of driver and equipment.
Refrigeration installations	Royal Decree 552/2019, of September 27, approving the Safety Regulations for refrigeration installations and their complementary technical instructions.	In accordance with the Royal Decree of application, the regulatory leak controls are carried out based on the amount of CO ₂ equivalent of each of the equipment, as well as the corresponding reviews and inspections.
Compulsory vehicle test	Royal Decree 265/2021, of April 13, on vehicles at the end of their useful life and amending the General Vehicle Regulations, approved by Royal Decree 2822/1998, of December 23.	Upon reaching the end of their useful life, the vehicles belonging to PortAventura World are properly managed, handing them over to an authorized vehicle treatment centre for dismantling and proper management of their components as waste.



9. VALIDATION

Updated Environmental Statement in accordance with the requirements established in Annex IV of the European Regulation (EU) 2018/2026 of the Commission of December 19, 2018, that modifies Regulation (EC) No. 1221/2009 of the European Parliament and of the Council, regarding the voluntary participation of organisations in a Community Environmental Management and Audit Scheme (EMAS).

Almudena
Bouza
Martínez



Firmado digitalmente
por Almudena Bouza
Martínez
Fecha: 2022.09.16
12:55:42 +02'00'



PORTAVENTURAWORLD.COM

