



# PortAventura® WORLD

PARKS & RESORT

# ENVIRONMENTAL STATEMENT

JANUARY-DECEMBER 2016

31 JUL. 2017

Declaración Validada







1	PORT AVENTURA ENTERTAINMENT, S.A. UNIPERSONAL .....	4
1.1	KEY DATA ON PORTAVENTURA RESORT .....	4
1.2	PORTAVENTURA PARK: THEME AREAS .....	5
1.3	OUR HOTELS.....	7
1.4	CONVENTION CENTRE .....	8
2	FOR THE ENVIRONMENT SINCE THE BEGINNING .....	9
2.1	CHRONOLOGY .....	9
2.2	ENVIRONMENTAL CERTIFICATIONS AND SEALS.....	10
3	ENVIRONMENTAL POLICY .....	11
4	ENVIRONMENTAL MANAGEMENT SYSTEM .....	12
4.1	ORGANISATION .....	12
4.2	RESPONSIBILITY AND AUTHORITY .....	12
5	DESCRIPTION OF THE ENVIRONMENTAL ASPECTS .....	14
6	ENVIRONMENTAL PROGRAMME .....	16
6.1	OBJECTIVES AND TARGETS .....	16
6.2	NON-COMPLIANCE .....	24
7	EVALUATION OF ENVIRONMENTAL BEHAVIOURS .....	25
7.1	WASTES.....	25
7.2	WATER .....	32
7.3	ENERGY MANAGEMENT .....	42
7.4	AIR EMISSIONS AND NOISE.....	48
7.5	CARBON FOOTPRINT / GREENHOUSE GAS EMISSIONS .....	49
7.6	BIODIVERSITY .....	50
7.7	EFFICIENT CONSUMPTION OF CERTAIN MATERIALS .....	51
8	ENVIRONMENTAL LEGISLATION.....	52
9	VALIDATION.....	55





# 1 PORT AVENTURA ENTERTAINMENT, S.A. UNIPERSONAL

## 1.1 KEY DATA ON PORTAVENTURA RESORT

- **Sector:** Tourism and Leisure
- **Location:** Vila-seca/Salou
- **Telephone:** 977 779 000
- **Website:**  
[www.portaventuraworld.com](http://www.portaventuraworld.com)
- **Tax Ref.:** A-63.776.306
- **PortAventura Park/PortAventura Caribe Aquatic Park - CNAE Industry Classification Parks:** 93.21
- **Hotels: PortAventura, El Paso, Caribe, Gold River and Mansión de Lucy - CNAE Industry Classification Hotels:** 55.10
- **Convention Centre - CNAE Industry Classification:** 82.30
- **Waste Producer Code:** P-26916.1
- **Shareholders:** 100% PAESA ENTERTAINMENT HOLDING, S.L.U.
- **EMAS Registration Number:** ES-CAT-000070
- **ISO 14001/2004 Certificate Number:** 3.00.07048
- **Environmental Management Standard for the hotels PortAventura, El Paso, Caribe, Gold River and Mansión de Lucy.**
- **EMAS Club Member:** association of EMAS-registered organisations in Catalonia ([www.clubemas.cat](http://www.clubemas.cat))
- **Area of Corporate Responsibility:** responsible for the PortAventura Environmental Management System (EMS)
- **Environmental investments for the year 2016:** €629 thousand



## 1.2 PORTAVENTURA PARK: THEME AREAS

### PORTAVENTURA PARK

It is divided into 6 completely different and fascinating worlds, each carefully themed down to the very last detail: Mediterrània, Polynesia, China, Mèxico, Far West and SésamoAventura.

PortAventura Park has 40 rides, up to 40 daily shows, more than 20 restaurants and another 60 food and beverage outlets, as well as 20 shops and numerous games.

#### Mediterrània:

This area pays homage to the different towns on the Catalan coast around the late 19<sup>th</sup> century, and recreates a typical Catalan fishing village.

#### Polynesia:

This area recreates late 19<sup>th</sup> century Polynesia as discovered by sailors such as Captain Cook and painted by great artists like Gauguin.

#### SésamoAventura:

A theme area created especially for families with children: 12,413 m<sup>2</sup> of fun in the company of all the Sesame Street characters.

#### China:

An exotic and monumental journey around the four eastern areas: The People's Republic of China, Imperial China, the Himalayas and Cambodia.

#### Mèxico:

A fabulous encounter with the ancient Mayan culture and colonial Mexico. An experience full of monuments, crafts and attractions.

#### Far West:

This area recreates an American town full of cowboy spirit and attention to detail: from a real Saloon to a railway station, a mining area... and even a replica of the Grand Canyon.



## CARIBE AQUATIC PARK

One of the best water parks in Europe: a large island with more than 50,000 m<sup>2</sup> dedicated to tropical adventures. With 16 thrilling attractions and slides, the water park is carefully themed and features waterfalls, huge pools, lush green areas filled with plants and palm trees and an amazing pirate ship manned by a crew of Sesame Street characters.

### Environmental certifications and standards held by our parks



## 1.3 OUR HOTELS



### Hotel PortAventura\*\*\*\*

Recreates the character and charm of a small Mediterranean village. The large pool and town square form the soul of the hotel. 500 rooms, 4 restaurants, a shop, shows, a Wellness Center, a solarium, etc. And with direct access to PortAventura Park via the Mediterrània area.



### Hotel Caribe\*\*\*\*

Set in the tropics, this hotel is surrounded by palm trees and features exceptional open spaces. It has 497 rooms, of which 26 make up Club San Juan (a private complex with exclusive rooms), 4 restaurants, 4 swimming pools (one sandy), a shop and a Wellness Centre.



### Hotel Gold River\*\*\*\*

Emulates a Far West town in the grip of gold fever.

It has 549 rooms, distributed over several buildings that form a reconstruction of the most important parts of a Far West town. 78 of its rooms are in the exclusive building The Callaghan's, which opened in 2015. It also features 3 pools, 6 food and beverage outlets and direct access to the Far West area of PortAventura Park.



### Hotel El Paso\*\*\*\*

A colourful Mexican-style hotel that recreates a traditional hacienda. There are a total of 501 rooms, 3 restaurants, 2 bars, 1 shop and 2 pools, one with a sunken galleon. It offers an All-Inclusive board basis, as well as Full Board.





### Hotel Mansión de Lucy\*\*\*\*\*

The most majestic and elegant of our hotels, located in a Victorian building. 31 spacious and high-quality rooms, the most exclusive that the resort has to offer, with all manner of extras. It has 1 pool, 1 restaurant, 1 bar and direct access to the Far West area of PortAventura Park.



### Environmental certifications and standards held by our hotels



## 1.4 CONVENTION CENTRE

With its privileged location in the midst of golf courses and excellent sea views, the PortAventura Convention Centre combines Mediterranean-style architecture with cutting-edge technology. The Convention Centre has 18 multi-functional, modular and versatile rooms, distributed over two levels and with the capacity to welcome groups of 10 to 3,000 people within a surface area of 13,000 m<sup>2</sup>.







## 2 FOR THE ENVIRONMENT SINCE THE BEGINNING

### 2.1 CHRONOLOGY

<b>1995</b>	PortAventura opens its doors, becoming the first theme park in Spain. Its most symbolic ride is Dragon Khan.
<b>1997</b>	New roller coaster: Stampida.
<b>1999</b>	Introduction of the show FiestAventura.
<b>2000</b>	New attraction Sea Odyssey: a fantastic submarine simulator.
<b>2001</b>	Launch of Templo del Fuego.
<b>2002</b>	PortAventura is transformed into a tourist destination, thanks to the opening of two hotels and a water park.
<b>2003</b>	Hotel Caribe opens its doors for the first time.
<b>2005</b>	The arrival of the free fall tower Hurakan Condor.
<b>2007</b>	The park welcomes Furius Baco: extreme acceleration.
<b>2009</b>	Opening of Hotel Gold River and PortAventura Convention Centre.
<b>2010</b>	Celebration of 15 <sup>th</sup> Anniversary.
<b>2011</b>	Opening of SésamoAventura.
<b>2012</b>	Shambhala (Europe's highest roller coaster). Driving and road safety school for children in the China area. Parking Caravanning.
<b>2013</b>	Renovations are carried out on the resort's water park, PortAventura Caribe Aquatic Park, with the addition of a new children's area, Europe's highest water slide and new attractions. Opening of the maze El Secreto de los Mayas in PortAventura Park.
<b>2014</b>	Launch of the new attraction Angkor: Adventure in the Lost Kingdom. Cirque du Soleil sets up base at PortAventura World to perform during summer 2014, inviting audiences into the world of <i>Kooza</i> .
<b>2015</b>	Celebration of 20 <sup>th</sup> Anniversary. Cirque du Soleil presents the show <i>Amaluna</i> at PortAventura World for the first time in Europe. New building – The Callaghan's at Hotel Gold River. Opening of Hotel Mansión de Lucy: the Resort's first 5* hotel.
<b>2016</b>	Work starts on a new theme park that is unique in Europe, Ferrari Land.



## 2.2 ENVIRONMENTAL CERTIFICATIONS AND SEALS



**1997**  
Creation of the Environmental Committee's Equip Verd



**2008**  
Commitment to The Global Compact



**2001**  
1<sup>st</sup> EMAS Registration



**2009**  
Joined Travelife: Sustainable Tourism – Hotels



**2003**  
1<sup>st</sup> Distintiu Garantia Qualitat Ambiental (Hotels)



**2014**  
Received the Travelife Gold Award



**2007**  
1<sup>st</sup> ISO 14001/2004 Certification.



**2015**  
2015 Committed to the achievement of the United Nations' Sustainable Development Goals (SDGs)



**2008**  
Member of Catalonia's Club EMAS



**2016**  
Committed to the Global Code of Ethics for Tourism of the World Tourism Organisation (UNWTO)







### 3 ENVIRONMENTAL POLICY

Port Aventura Entertainment, S.A.U., managing company of PortAventura World Parks & Resort, family leisure destination that encompasses PortAventura Park, PortAventura Caribe Aquatic Park, Ferrari Land, Hotel PortAventura, Hotel El Paso, Hotel Caribe, Hotel Gold River, Hotel Mansión de Lucy, PortAventura Convention Centre and Parking Caravanning, carries out its activities with maximum respect for the environment and its surroundings.

In order to fulfil its commitment to protection of the environment and continual improvement of environmental results, PortAventura's actions are governed by the following principles:

1. To ensure compliance with and exceed the demands of applicable environmental laws, in addition to optional requirements, making them an integral part of its Environmental Policy.
2. To assign all means and responsibilities necessary in order to guarantee the attainment of objectives leading to continual improvements in environmentally-friendly behaviours, designing processes that aim to minimise and prevent activities impacting upon the environment.
3. To ensure compliance with environmental objectives through an environmental consultancy and executive board, in order to consolidate the basis for the promotion of respect for the environment.
4. To educate, train and raise awareness, at all levels, amongst company personnel in order to create an atmosphere conducive to the progression of all environmental measures.
5. To communicate the Environmental Policy to everybody working within or on behalf of the organisation, including contractors and suppliers, as well as other stakeholders.
6. To identify the environmental aspects and associated environmental impact of new and/or scheduled activities.
7. To promote, to the maximum possible extent, projects that encourage our visits to respect the environment.
8. To preserve our region's biodiversity and ecosystems and the species and habitats within it.
9. To encourage and commit to sustainable use of natural resources (water and electricity) by encouraging reuse and minimal generation of wastes, prioritising waste treatment and thereby promoting mitigation of and adaptation of practices to climate change.
10. To promote environmental criteria in product purchasing, contracting of services and events management, guaranteeing that our suppliers share the same environmental standards.

**Fernando Aldecoa**  
General Manager

February 2017





## 4 ENVIRONMENTAL MANAGEMENT SYSTEM

### 4.1 ORGANISATION

Environmental Management in PortAventura is based on two key figures:

**Environmental Management System Representative (hereinafter EMSR):**

It is necessary to have a manager to act as a liaison with the Management Committee and as the System Representative for regulatory purposes.

**Equip Verd (or Environmental Committee):**

A work group comprising of representatives from the different company departments, which has as its objective the correct and uniform management of the environment throughout the resort.

### 4.2 RESPONSIBILITY AND AUTHORITY

The responsibilities for the different roles within the system are:

**EMSR:**

- Supervises the overall application and maintenance of the Environmental Management System (hereinafter EMS) in PortAventura World.
- Acts as a liaison between the Management Committee and Equip Verd, and vice versa.
- Appoints the Secretary and members of the Equip Verd.
- Determines who is responsible for decision-making for proposals related to the EMS, targeted at improving PortAventura World's Environmental Policy.

**Management Committee, Area Managers and Supervisors:**

- The Management Committee decides who to appoint to carry out the duties of the EMS Representative.
- Take decisions regarding environmental management of the resort, based on proposals submitted by the EMSR.
- Encourage implementation of the EMS in the respective departments.
- Management approves and signs the Environmental Policy.





### Equip Verd (or Environmental Committee)

- Acts as a forum for exchange, debate, study and discussion regarding the PortAventura World EMS.
- Takes decisions on all aspects of Environmental Management of the resort, provided that the EMSR believes it is within their competence.
- Puts forward and presents to the EMSR the implementation or development of proposals targeted at environmental improvements or changes in PortAventura World's Environmental Policy.
- Provides the Management Committee with all information related to the environmental decisions to be taken.
- Establishes objectives for improvement in accordance with PortAventura World's Environmental Policy.

### Members of the Equip Verd

- Supervise EMS implementation and maintenance in PortAventura, within the department/area that they represent.
- Provide Equip Verd with all necessary information on the development of the EMS for the department that they represent. Equip Verd members are responsible for referring EMS decisions, adopted by Equip Verd or by the Management Committee, to the departments or areas that they represent.
- Offer support, in environmental terms, to contract "Managers".



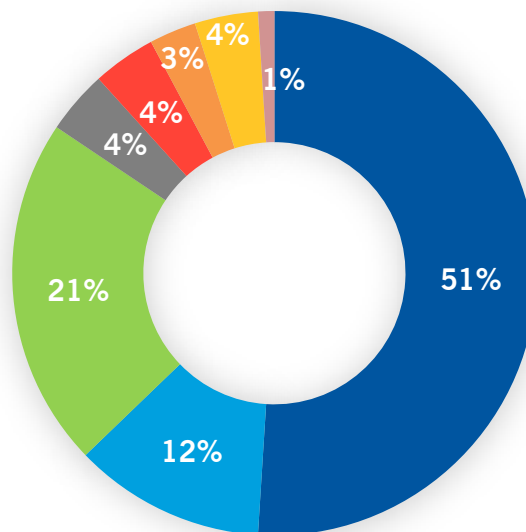


## 5 DESCRIPTION OF THE ENVIRONMENTAL ASPECTS

PortAventura identifies its environmental aspects (under normal and abnormal conditions and in emergency situations), associated with present and future activities from a life cycle perspective, and assesses them according to evaluation criteria that allow the significance and importance of each aspect to be quantified and classified as Significant or Insignificant.

Percentual relationship of the environmental aspects identified

- Wastes
- Air emissions
- Natural resources
- Waste Waters
- Spillages/discharges
- Noise
- Consumption of chemical products
- Other (impact on landscape)





Significant environmental aspects and their impact are shown in the table below (both direct and indirect):

<b>SIGNIFICANT ENVIRONMENTAL ASPECTS 2016</b>	<b>DIRECT/INDIRECT</b>	<b>NATURE OF THE ASPECT</b>	<b>ENVIRONMENTAL IMPACT</b>
<b>Consumption of drinking water</b>	Direct	Use of natural resources	Depletion of natural resources
<b>Consumption of electricity</b>	Direct	Use of natural resources	
<b>Waste paper/cardboard.</b>	Direct and indirect	Generation, recycling, reuse and elimination of wastes	Contamination of soil and/or water
<b>Vila-seca sanitary wastewater collection system</b>	Direct	Generation of wastewater	
<b>General wastewater collection system</b>	Direct	Generation of wastewater	
<b>Emission of gases into the atmosphere from visits' vehicles</b>	Indirect	Generation of emissions released into the atmosphere	Impact on the quality of air.

The significant environmental aspects remain the same as for the previous year: consumption of drinking water, consumption of electricity, waste paper and cardboard and wastewater from the Vila-seca and general collection systems.

This year emission of gases into the atmosphere from visits' vehicles is classified as a significant environmental aspect. This is a new aspect identified following analysis from a life cycle perspective.

Residual debris is no longer classified as a significant environmental aspect.





## 6 ENVIRONMENTAL PROGRAMME

### 6.1 OBJECTIVES AND TARGETS

Environmental objectives are proposed by the Equip Verd and then approved by the Environmental Management System Representative, together with the Head of each department concerned.

All environmental objectives are consistent with the Environmental Policy, applicable laws and PortAventura World's significant environmental aspects, taking associated risks and opportunities into consideration, and include a commitment to the continuous improvement of environmental strategies.

Our water and energy targets are established based on the opening calendar that is approved by Management each year. However, this calendar is always subject to modifications based on requests for events and/or opening/closing of facilities depending on current occupancy.

At the Equip Verd Environmental Committee meetings, the progress of these objectives is monitored and the outcomes logged in the Environmental Management software.

Below are the tasks carried out in the 2016 financial year aimed at achieving the objectives defined.





## Environmental Objective (EOB) Tasks for 2016

### EOB138. ENVIRONMENTAL ASSESSMENT OF ALL SUPPLIERS (100 %) AND IMPROVEMENT OF ENVIRONMENTAL PERFORMANCE

#### ENVIRONMENTAL POLICY



Items 5 and 10

#### GLOBAL COMPACT



Network Spain  
WE SUPPORT

10 principles

[www.unglobalcompact.org](http://www.unglobalcompact.org)

#### SUSTAINABLE DEVELOPMENT GOALS



**Estimated date of completion:** 31/12/2017

**Evaluation:** All suppliers working for PortAventura are evaluated.

#### Tasks carried out:

- **Task T12:** Supplier portal.  
We use this new portal, accessible via PortAventura World's corporate website, to carry out the supplier approval process. The Corporate Responsibility screening criteria ensure that our suppliers act in line with PortAventura World's environmental and sustainability principles.

### EOB147. SUSTAINABLE ENERGY CONSUMPTION

0.94% reduction in overall on-site electricity consumption (Kw/room nights) in 2016 compared to 2015.

#### ENVIRONMENTAL POLICY



Item 9

Related environmental aspects:  
consumption of electricity.

#### GLOBAL COMPACT



Network Spain  
WE SUPPORT

7 and 8 principles

[www.unglobalcompact.org](http://www.unglobalcompact.org)

#### SUSTAINABLE DEVELOPMENT GOALS



**Environmental impact:** depletion of natural resources.

**Estimated date of completion:** 31/12/2016

**Evaluation:** In 2016 electricity consumption (Kw/room nights) for the whole of the facilities decreased by 1.96% compared to 2015.



**Tasks carried out:**

- **Task T1:** Change lighting to LEDS in Hotel El Paso.
- **Task T2:** Installation of presence sensors in park and hotel technical rooms.
- **Task T3:** Change lighting to LEDS in Mediterrània shop 231.
- **Task T4:** Improvements to window and door fittings in Mediterrània shop 231.
- **Task T5:** Actions to reduce consumption in food and beverage outlets: weekly programming with schedules for different kitchens, rooms, etc., depending on events or work in order to adjust lighting schedules.
- **Task T6:** Define and monitor operational hours of hotel air conditioning based on the actual and operational needs.
- **Task T7:** Improve roof insulation in La Cantina.
- **Task T8:** Improvements in lighting and air conditioning control systems in different units: Capitán Refuge, Iron Horse, Jeremias and Hotel Gold River swimming pool area.

**EOB148. NEW ENVIRONMENTAL TRAINING PLAN**

Increase the number of environmental training actions and their content.

Increase the number of employees trained.

Carry out training through environmentally friendly technologies such as e-learning.

**ENVIRONMENTAL POLICY**



Item 4

**GLOBAL COMPACT**



Network Spain  
WE SUPPORT  
7 and 8 principles  
[www.unglobalcompact.org](http://www.unglobalcompact.org)

**SUSTAINABLE DEVELOPMENT GOALS**



**Estimated date of completion:** 31/12/2017

**Evaluation:** The tasks planned for this objective have been completed.

**Tasks carried out:**

- **Task T1:** Define the platform to deliver training through environmentally-friendly technology.
- **Task T2:** Establish the new training plan.
- **Task T3:** Define Initial corporate training/orientation “Commitments to the Environment”.





## EOB149. IMPROVEMENT OF WASTE MANAGEMENT

To reduce the overall amount of waste generated on site (T/million visits) by 0.5 % in 2016, compared to 2015.

Improvement of differentiation of wastes: to reduce the overall amount of mixed waste generated on site (general + MSW) by 0.5 % in 2016, compared to 2015.

### ENVIRONMENTAL POLICY



Item 9

### GLOBAL COMPACT



Network Spain  
WE SUPPORT

7 and 8 principles  
[www.unglobalcompact.org](http://www.unglobalcompact.org)

### SUSTAINABLE DEVELOPMENT GOALS



**Environmental impact:** contamination of soil and/or water.

**Estimated date of completion:** 31/12/2016

**Evaluation:** In 2016, the waste generated per million visits decreased by 0.9%, compared to 2015.

In 2016 the mix of general waste and MSW generated per million visits increased by 3.1%, compared to 2015. Actions will be defined to improve this fraction in 2017.

### Tasks carried out:

- **Task T1:** Change of the packaging of cleaning products in the food and beverage area to bag in box, thus reducing the volume of contaminated packaging waste.
- **Task T2:** To promote the reuse of materials by donating obsolete materials to social organisations (e.g. material from the replacement of furniture in our hotels).
- **Task T4:** Improve the identification of waste bins to facilitate segregation of waste by visits.
- **Task T7:** Reduce organic food wastage:
  - In the hotel buffets there is a totem featuring a picture of the Sesame Street character Oscar and messages about wasting food, encouraging our younger hotel guests to share in this initiative.
  - In the cafeteria for Cantina employees, a series of informative posters on food wastage have been put up (see image in EOB 151, task 7).



## EOB150. SUSTAINABLE CONSUMPTION OF DRINKING WATER (Water for human consumption, water for recreation and for swimming and other water for irrigation)

Reduce overall consumption of drinking water on site by 1.67% (m<sup>3</sup>/room nights) in 2016 compared to 2015.

### ENVIRONMENTAL POLICY



Related Significant environmental aspects: consumption of drinking water.

### GLOBAL COMPACT



Network Spain  
WE SUPPORT 7 and 8 principles  
[www.unglobalcompact.org](http://www.unglobalcompact.org)

### SUSTAINABLE DEVELOPMENT GOALS



**Environmental impact:** consumption of natural resources and contamination of water.

**Estimated date of completion:** 31/12/2016

**Evaluation:** In 2016, the consumption of drinking water in m<sup>3</sup>/room nights decreased by 3.99% compared to 2015.

#### Tasks carried out:

- **Task T1:** Installation of micro-diffusion devices in taps situated in the Mediterrània area of PortAventura Park to reduce flow.
- **Task T3:** Installation of automated meters to measure the consumption of drinking water in the hotels Hotel PortAventura, Hotel Gold River, Hotel El Paso and Hotel Caribe in order to increase control consumption.

## EOB151. IMPROVEMENT OF ENVIRONMENTALLY-FRIENDLY BEHAVIOURS THROUGH INTERNAL AWARENESS CAMPAIGN

Reduce overall consumption of drinking water on site by 1.67% (m<sup>3</sup>/room nights) in 2016 compared to 2015.

### ENVIRONMENTAL POLICY



Item 2

### GLOBAL COMPACT



Network Spain  
WE SUPPORT 7, 8 and 9 principles  
[www.unglobalcompact.org](http://www.unglobalcompact.org)

### SUSTAINABLE DEVELOPMENT GOALS



**Estimated date of completion:** 31/12/2016

**Evaluation:** 90 % of planned initiatives implemented.

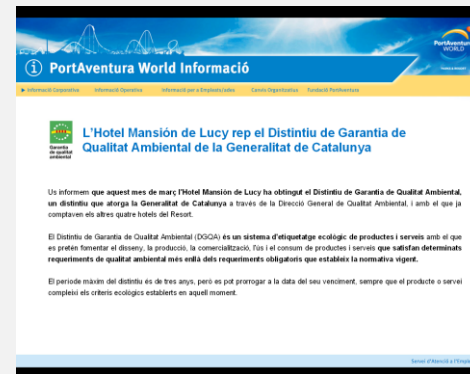




## Tasks carried out:

2016 internal communication plan to raise environmental awareness:

- **Task T1:** Start-up of the E-payroll service, emailing of payslips.
- **Task T2:** Notification of adhesion to the UN's 17 Sustainable Development Goals.
- **Task T3:** Notification of all environmental certifications and seals held by the Company.
- **Task T4:** Notification of revision or publication of corporate documents on environmental matters.
- **Task T5:** Notification of set-up of the Corporate Responsibility Committee.
- **Task T6:** Dissemination of the Good Environmental Practices handbook.
- **Task T7:** Notifications to raise awareness of food wastage.
- **Task T8:** Awareness-raising communications related to relevant dates for the Environment, e.g. International Water Day.
- **Task T10:** Explanation of PortAventura World's understanding of Corporate Responsibility expressed through infographics.





<h2>EOB152. IMPLEMENTATION OF INITIATIVES TO ENCOURAGE VISITS TO RESPECT THE ENVIRONMENT</h2>		
<p><b>ENVIRONMENTAL POLICY</b></p>  <p>Item 7</p>	<p><b>GLOBAL COMPACT</b></p>  <p>Network Spain WE SUPPORT</p> <p>7principle</p> <p><a href="http://www.unglobalcompact.org">www.unglobalcompact.org</a></p>	<p><b>SUSTAINABLE DEVELOPMENT GOALS</b></p>  <p>13 CLIMATE ACTION</p>

**Estimated date of completion:** 31/12/2018

**Evaluation:** 57 % of planned initiatives implemented.

The initiatives deferred to 2017 are the following:

- Sustainable events handbook
- Waste paper bins in the drop-off area of PortAventura Park
- Waste segregation containers in large food and beverage areas in PortAventura Park



**Tasks carried out:**

**Task T1:** In 2016 we worked on the development of a Convention Centre Sustainable Events Handbook that details the services that clients can contract if they opt for an environmentally responsible event. Other measures that contribute to the sustainability of events are the use of recycled and reusable materials, low-energy lighting, digital documentation, integration into the environment with planting of native species and the preparation of menus (Brain Food) based on organic and local products.

**Task T2:** Communicate our Corporate Responsibility commitment through the internal TV channels in our hotels.

**Task T3:** New recycling bins inside Hotel PortAventura and Hotel Gold River.

**Task T4:** Inclusion of environmental message on resort self-service restaurant tablecloths.

**Task T5:** Inclusion of environmental message in the Welcome leaflets in our hotels.

**EOB153. SUSTAINABLE MOBILITY**

**ENVIRONMENTAL POLICY**



Items 7 and 9

**GLOBAL COMPACT**



Network Spain  
WE SUPPORT 8 principle

[www.unglobalcompact.org](http://www.unglobalcompact.org)

**SUSTAINABLE DEVELOPMENT GOALS**



**Estimated date of completion:** 31/12/2018

**Evaluation:** The tasks planned for this period were implemented in 2016.

**Tasks carried out:**

**Task T1:** Purchase of 4 electric buggies in 2016 for internal transportation.

**Task T2:** Promote use of electric vehicles among subcontractors by supplying free electricity at charging points.





## 6.2 NON-COMPLIANCE

PortAventura World, with the aim of involving staff in the Environmental Management System, has worked to raise awareness among all employees so that they know what action should be taken following detection of any anomalies or breaches of the requirements of our Environmental Management System.

Detecting instances of non-compliance is a great challenge for our company, as it helps us to resolve existing problems and be proactive in focusing our actions on continuous improvement. Regular operational control audits are carried out in the different centres in order to verify correct development of environmental measures, detect any existing or potential deviations and establish, respectively, suitable corrective and preventive measures.





## 7 EVALUATION OF ENVIRONMENTAL BEHAVIOURS

### 7.1 WASTES

Since the resort opened in 1995, motivated by the spirit for improvement and environmental commitment, PortAventura World has progressively increased the quantities of fractions of wastes segregated at source.

PortAventura World has a waste management area and contracts companies specialising in the sector for this purpose. These specialist companies take charge of installing containers for the different types of waste, and deal with collection and transportation to an authorised agent for treatment and conversion.

#### WASTE MANAGEMENT

As operations are variable, the number of waste fractions generated will also always vary due to the unique nature of the facilities. wastes vary according to operational needs.

As part of the objective to minimise the generation of waste, we are working with contractors and our own staff in regard to recycling and the proper use of work materials. In 2016, 39 fractions of waste were segregated. Recovery of wastes is the main route for waste management, preferable to treatment or landfills.

The following table presents the main characteristics of PortAventura World's waste management system:



<b>WASTES</b>		<b>Type 1</b> Wastes generated in the course of normal business operations, directly or indirectly produced by our clients	<b>Type 2</b> Wastes generated by company support and structural activities
<b>METHOD OF COLLECTION</b>		Itinerant	Individual
<b>CONTAINERS</b>	<b>Non-hazardous</b>	1 m <sup>3</sup> /5 m <sup>3</sup> /6 m <sup>3</sup> /bins/big bags	5 m <sup>3</sup> /14 m <sup>3</sup> /20 m <sup>3</sup> /30 m <sup>3</sup> /big bags
	<b>Hazardous</b>	Special big bags/150 l cylinders/1 m <sup>3</sup> cubic containers	Special big bags/150 l cylinders/1 m <sup>3</sup> cubic containers
<b>COLLECTION POINTS</b>	<b>Non-hazardous</b>	Throughout the resort	Throughout the resort
	<b>Hazardous</b>	Throughout the resort	Recycling points near buildings 112 and 113 and in resort workshops
<b>NON-HAZARDOUS WASTE FRACTIONS</b>		Cooking oil Cardboard Food cans Glass containers Lightweight packaging Mixed waste (General and MSW) Batteries Plastic Organic wastes	Bulky general waste Copper cabling Cardboard Scrap metal Lightweight packaging Debris Wood Mixed waste (general and MSW) Batteries Tyres Plastic Animal remains Plant waste, straw Toner Cooking fats
<b>HAZARDOUS WASTE FRACTIONS</b>		Contaminated containers	Absorbents Mineral oil Empty aerosols Batteries and accumulators Used fats and waxes Electronic scrap Contaminated containers Cooking fats Oil filters Fridges Fluorescents Gases in pressurised containers Laboratory chemicals Waste paint Water-based cleaning fluids Paint waste with organic solvents or hazardous substances Other solvents and mixed solvents Silicone

It should be noted that some PortAventura World suppliers directly manage their own wastes.



## EVOLUTION OF THE DIFFERENT WASTE FRACTIONS

Waste	CER	Tonnes (2014)	t/million visits (2014)	Tonnes (2015)	t/million visits (2015)	Tonnes (2016)	t/million visits (2016)
Absorbents	150202	4.36	0.93	4.74	0.95	5.15	1.04
Cooking oil	200125	25.98	5.53	26.95	5.41	26.56	5.37
Mineral oil	130205	4.21	0.90	3.21	0.64	1.89	0.38
Empty aerosols	150111	0.26	0.05	0.25	0.05	0.26	0.05
Acid	060106	-----	-----	-----	-----	1.02	0.21
Bulky general waste	200307	32.06	6.82	34.04	6.83	30.79	6.22
Batteries and accumulators	200133	1.85	0.39	2.25	0.45	2.44	0.49
Copper cabling	170411	-----	-----	0.80	0.16	5.82	1.18
Cardboard	200101	376.43	80.13	412.20	82.70	408.33	82.55
Pumpkins	200302	9.30	1.98	17.98	3.61	15.40	3.11
Ni-Cd accumulators	160602	0.59	0.13	0.34	0.07	0.36	0.07
Used fats and waxes	120112	0.02	0.01	0.30	0.06	0.23	0.05
Scrap metal	200140	87.40	18.61	105.20	21.11	89.29	18.05
Electronic scrap	200135	1.58	0.34	0.03	0.01	-----	-----
Non-hazardous electronic scrap	200136	7.38	1.57	3.78	0.76	7.51	1.52
Expired cosmetics	70699	2.50	0.53	-----	-----	-----	-----
Solvents	140602	-----	-----	0.03	0.01	-----	-----
Non-halogenated solvents	140603	-----	-----	0.07	0.01	0.68	0.14
Contaminated containers	150110	5.28	1.12	5.78	1.16	5.81	1.17
Glass containers	200102	80.00	17.03	76.78	15.41	76.42	15.45
Mixed lightweight packaging	150106	125.86	26.79	153.34	30.77	153.60	31.05
Debris	170107	443.78	94.47	250.28	50.22	316.98	64.08
Oil filters	160107	-----	-----	0.01	0.003	0.12	0.024
Fluorescents	200121	1.20	0.26	1.26	0.25	1.80	0.363
Gases in pressurised containers	160504	-----	-----	0.16	0.03	-----	-----
Cooking fats	020204	44.25	9.42	80.28	16.11	17.96	3.63

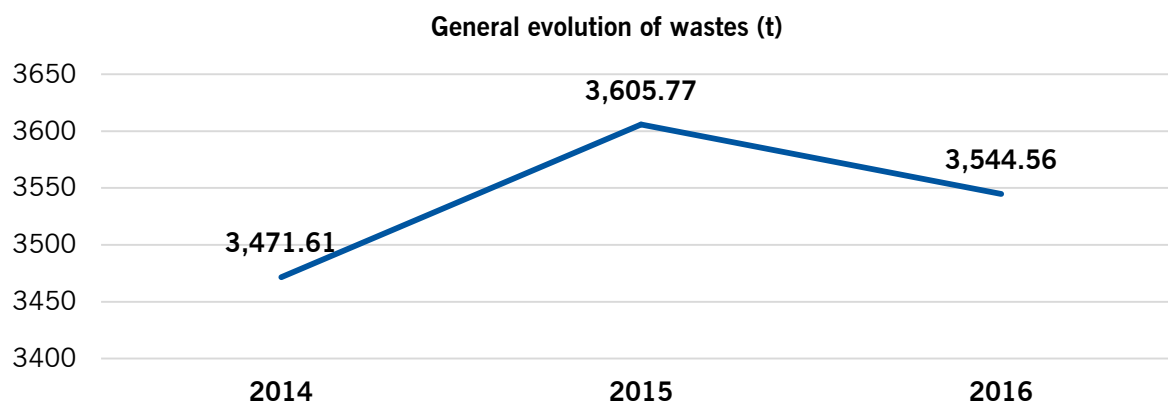
Waste	CER	Tonnes (2014)	t/million visits (2014)	Tonnes (2015)	t/million visits (2015)	Tonnes (2016)	t/million visits (2016)
Lighting	160214	0.39	0.08	0.97	0.20	3.71	0.75
Water-based cleaning fluids	120301	-----	-----	0.05	0.01	0.61	0.12
Water containing hydrocarbons	160708	4.06	0.86	35.24	7.07	0.02	0.00
Wood	200138	97.33	20.72	128.06	25.69	104.67	21.16
Mixed waste (general and MSW)	200301	1.559.58	332.00	1.697.58	340.60	1737.29	351.22
Tyres	160103	-----	-----	-----	-----	0.32	0.07
Fridges	200123	-----	-----	-----	-----	0.70	0.14
Other solvents and mixed solvents	140603	0.11	0.02	0.17	0.03	-----	-----
Wooden pallets	150103	22.28	4.74	-----	-----	-----	-----
Pencil batteries	160604	0.17	0.04	0.25	0.05	0.19	0.04
Plastic	200139	4.83	1.03	6.98	1.40	9.11	1.84
Laboratory chemicals	160506	0.03	0.01	0.11	0.02	0.04	0.01
Inorganic chemicals	160507	0.57	0.12	0.18	0.04	0.82	0.17
Water-based wastes with hazardous substances	161001	-----	-----	1.06	0.21	-----	-----
Paint waste containing organic solvents or hazardous substances	080111	0.48	0.10	1.58	0.32	0.83	0.17
Organic wastes	200108	471.56	100.38	529.36	106.21	499.68	101.02
Plant waste, straw	200201	10.36	2.21	14.10	2.83		
Plant waste, straw	200202	45.22	9.63	9.86	1.98	18.12	3.66
Silicone	080409	0.02	0.005	-----	-----	0.04	0.01
Contaminated soil	170503	0.16	0.03	-----	-----	-----	-----
Toner	080318	0.19	0.04	0.15	0.03	0.01	0.00



Waste	CER	Tonnes (2014)	t/million visits (2014)	Tonnes (2015)	t/million visits (2015)	Tonnes (2016)	t/million visits (2016)
<b>Total waste generated in tonnes</b>		<b>3471.61</b>	<b>739.02</b>	<b>3605.77</b>	<b>723.46</b>	<b>3544.56</b>	<b>716.60</b>

PortAventura World's waste management is coordinated throughout the resort.

Tonnes of waste generated are rounded to 2 decimal places.



Tonnes rounded to 2 decimal places.

In absolute terms, in 2016 waste generation decreased by 1.70% compared to 2015. This decrease was largely due to efforts made in the revision of work processes, where it was sought to carry out works whilst generating the least amount of waste possible;

- For example cooking fat wastes were reduced by improving the process for collecting this waste, separating the residual fats from the water as much as possible.
- We continue to work on the goal of reusing resources by looking for businesses or individuals that can give a second life to objects that for us have become waste.
- The number of investments directly affects the volume of waste generated (renovation of assets, works, special maintenance, etc.)

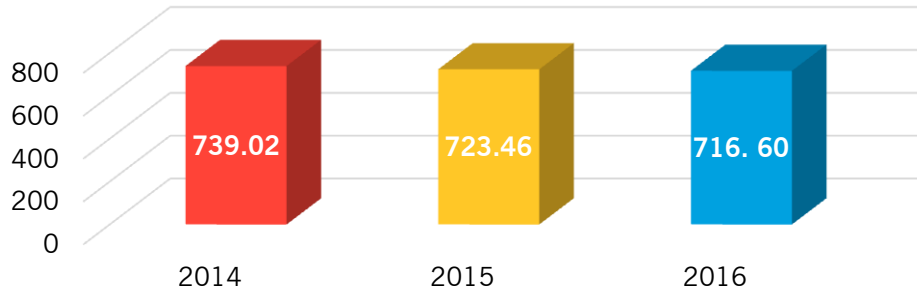
716.60 tonnes of waste have been generated per million visits.

The following graph shows the evolution of waste generation per million visits during the period 2014-2016.





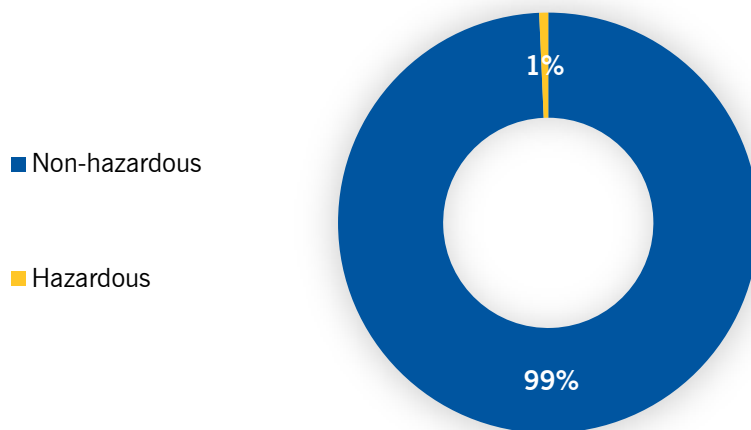
### Evolution of waste generation per million visits (t)



Tonnes rounded to 2 decimal places.

### HAZARDOUS WASTES

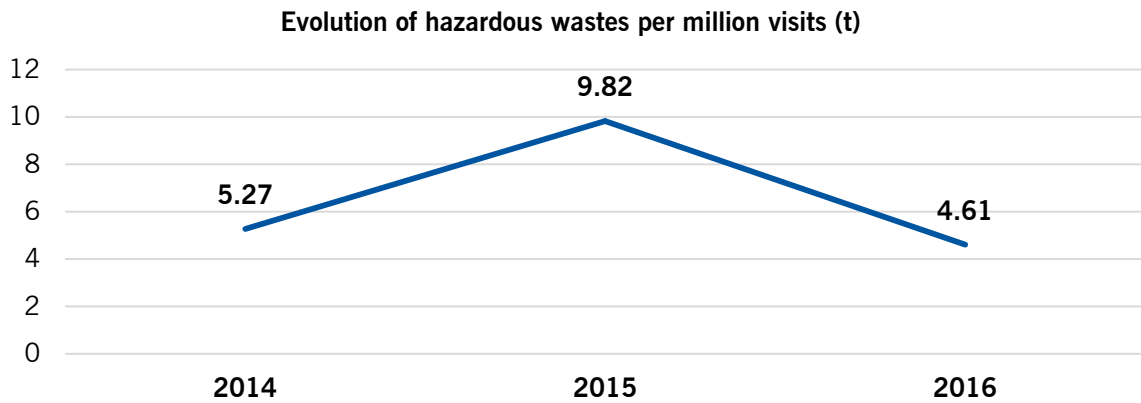
#### Waste classification. 2016



In 2016 hazardous wastes represented 1% of the total of wastes generated, which remains the same percentage as in previous years.

Although the amounts of hazardous and non-hazardous wastes have not changed, in 2016 there was actually a decrease in the % of hazardous waste generated compared to 2015.



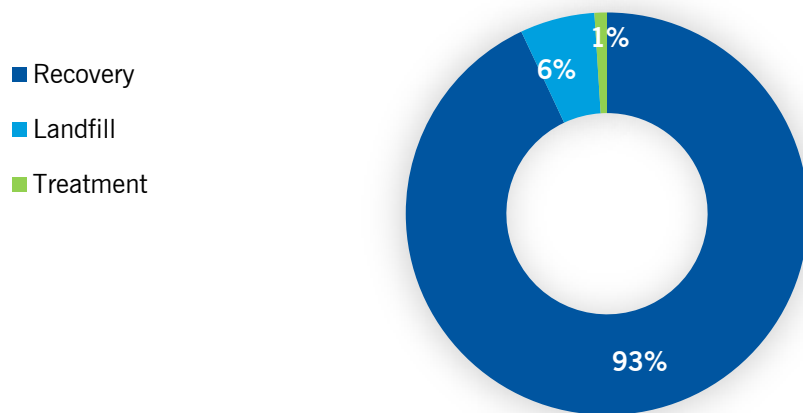


Tonnes rounded to 2 decimal places.

### MANAGEMENT ROUTES

Wastes were handled according to the following management routes:

#### Percentage distribution of waste management by management route 2016



EVOLUTION OF WASTE MANAGEMENT ROUTE DISTRIBUTION			
Management	2014	2015	2016
Recovery (%)	89	93	93
Treatment (%)	4	3	1
Landfill (%)	7	4	6



## 7.2 WATER

Water plays a fundamental role in the operation and theming of our resort. Since the beginning, PortAventura World has always been conscious that water is a vital resource for life and represents a key factor for surrounding socio-economic, industrial and tourism development.

Correct water management is one of PortAventura World's greatest challenges.

### WATER CATEGORISED ACCORDING TO SOURCE AND USE

In regard to source and use, at PortAventura World we are able to differentiate between four different types of water:

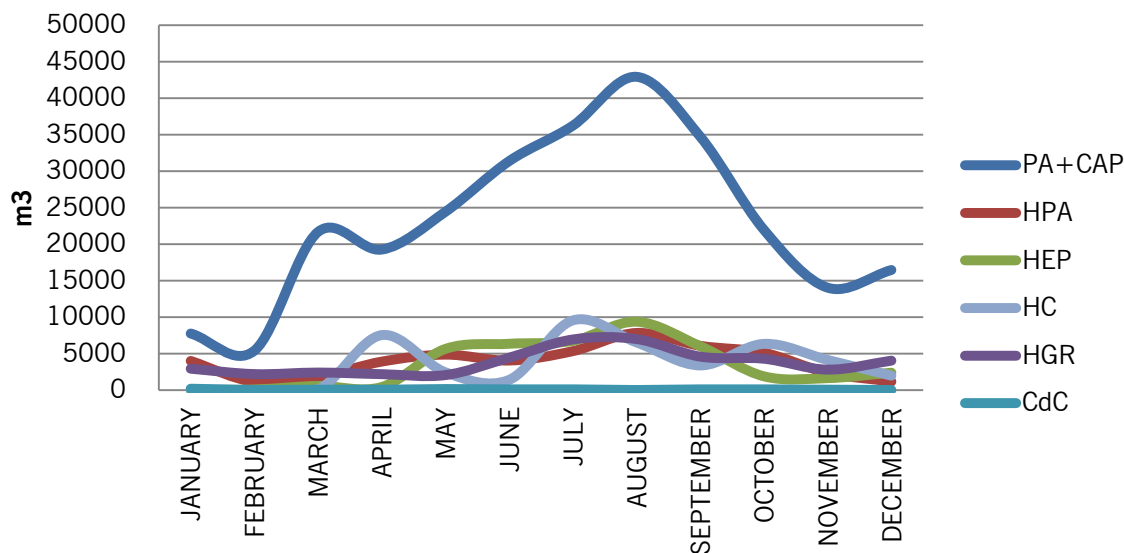
- Water for human consumption
- Water for recreation and/or for swimming
- Reclaimed water for irrigation
- Other water for irrigation





## WATER FOR HUMAN CONSUMPTION

Water for human consumption. 2016



Water for human consumption, in m³ per 1,000 visits/room night

	2014	2015	2016
PortAventura Park/Caribe Aquatic Park	73.55	82.31	70.82
Hotel PortAventura	175.43	125.67	151.64
Hotel El Paso	174.44	207.54	199.75
Hotel Caribe	207.25	197.57	193.83
Hotel Gold River	172.06	191.70	204.35
Hotel Mansión de Lucy	-----	108.31	148.18
Convention Centre	13.20	11.42	10.28

Figures rounded to 2 decimal places.



**Water for human consumption, in m<sup>3</sup> and visits/room nights (2016)**

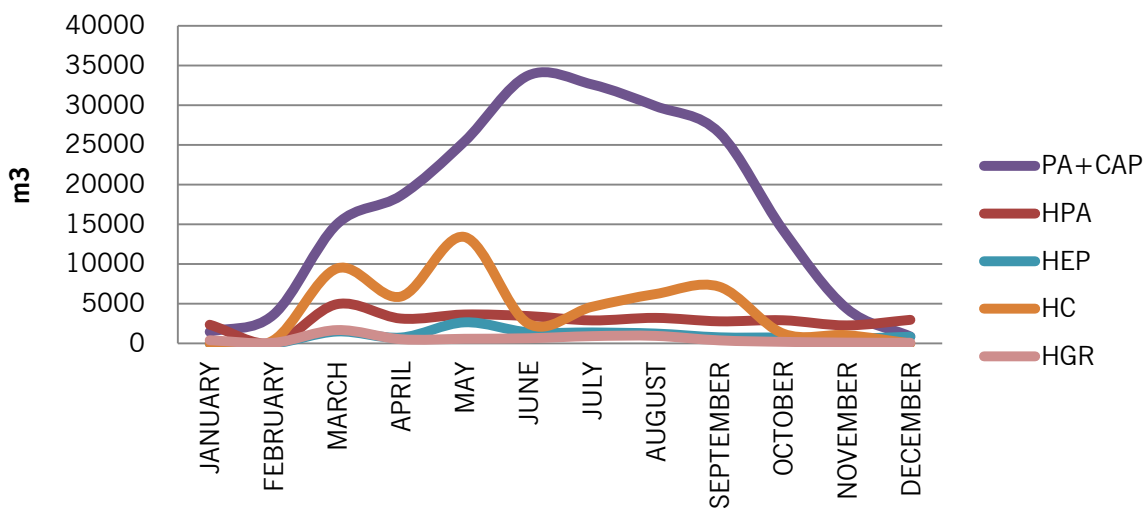
	human water consumption, m <sup>3</sup> (2016)	visits/room nights (2016)
PortAventura Park	275,969	3,528,908
Caribe Aquatic Park		367,993
Hotel PortAventura	47,365	312,362
Hotel El Paso	40,822	204,362
Hotel Caribe	43,248	223,126
Hotel Gold River	45,571	223,005
Hotel Mansión de Lucy	2,100	14,172
Convention Centre	745	72,461

Water coming from the municipal supply. It is used fundamentally in restaurants, toilets, for personal hygiene, for cleaning etc. Practically 100% becomes wastewater.

We would like to point out that this indicator regarding water management is highly dependent upon the correct behaviour of our customers. In this regard, our customers are the main consumers of this type of water.

**WATER FOR RECREATION AND SWIMMING**

**Water for recreation and swimming. 2016**



**Water for recreation and swimming, in m<sup>3</sup> per 1,000 visits/room night**

	2014	2015	2016
<b>PortAventura Park</b>	<b>39.14</b>	<b>27.68</b>	<b>41.24</b>
<b>Caribe Aquatic Park</b>	<b>193.39</b>	<b>187.39</b>	<b>165.49</b>
<b>Hotel PortAventura</b>	<b>109.72</b>	<b>114.01</b>	<b>110.76</b>
<b>Hotel El Paso</b>	<b>79.97</b>	<b>58.18</b>	<b>58.10</b>
<b>Hotel Caribe</b>	<b>303.55</b>	<b>314.89</b>	<b>232.33</b>
<b>Hotel Gold River</b>	<b>56.75</b>	<b>71.16</b>	<b>29.01</b>
<b>Hotel Mansión de Lucy</b>	<b>-----</b>	<b>46.39</b>	<b>31.19</b>

Figures rounded to 2 decimal places. The Convention Centre does not use this category of water in its facilities.

**Water for recreation and swimming, in m<sup>3</sup> and visits/room nights (2016)**

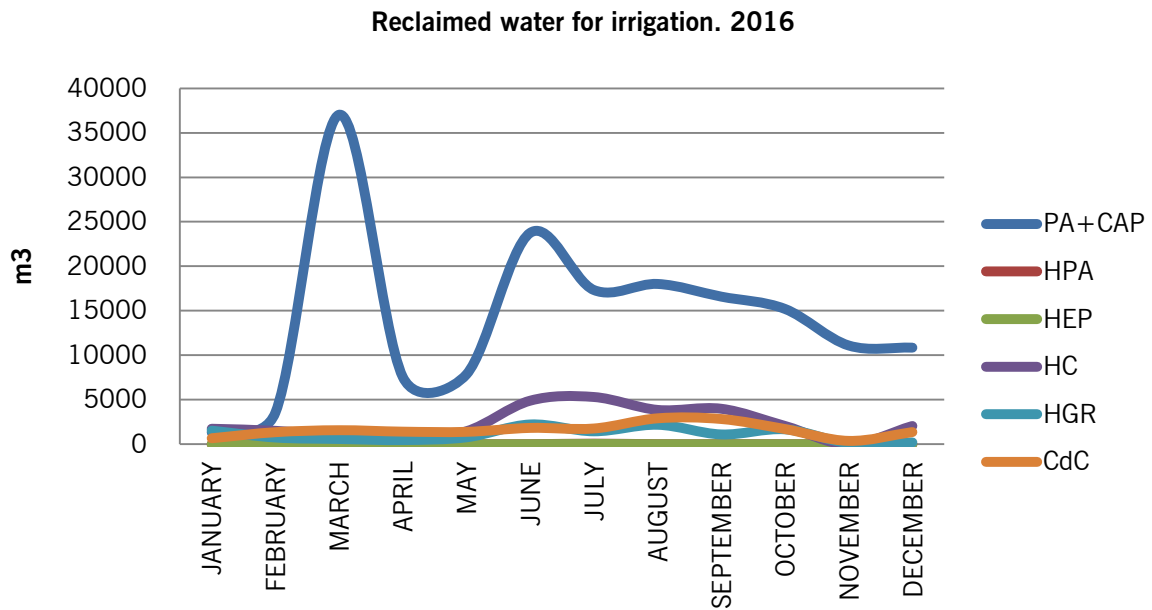
	Water for recreation and swimming, m <sup>3</sup> (2016)	visits/room nights (2016)
<b>PortAventura Park</b>	145,518	3,528,908
<b>Caribe Aquatic Park</b>	60,899	367,993
<b>Hotel PortAventura</b>	34,597	312,362
<b>Hotel El Paso</b>	11,874	204,362
<b>Hotel Caribe</b>	51,838	223,126
<b>Hotel Gold River</b>	6,470	223,005
<b>Hotel Mansión de Lucy</b>	442	14,172

In our system, we have differentiated records for the consumption of water for recreational use and for swimming. This type of water is for human use and has the same source as that in the previous section, although this type of water is kept in a closed circuit by filtering and treatment, and only a small percentage is poured away as wastewater after washing filters.



## RECLAIMED WATER FOR IRRIGATION

This type of water consists of purified waste water that has undergone an additional or supplementary treatment process, allowing it to be used for certain purposes – in this case, irrigation. The reclaimed water reused in PortAventura World comes from tertiary treatment at the Wastewater Treatment Plant in Vila-seca and Salou, and since 1996 has been used exclusively to water the vegetation.





Reclaimed water for irrigation in m<sup>3</sup> per 1,000 m<sup>2</sup> landscaped area

	2014	2015	2016
PortAventura Park/Caribe Aquatic Park	276.24	231.36	366.85
Hotel PortAventura	377.12	399.82	486.81
Hotel El Paso	604.29	708.19	785.58
Hotel Caribe	708.22	780.44	872.06
Hotel Gold River/Hotel Mansión de Lucy	268.65	314.62	280.11
Convention Centre	226.76	469.45	982.90

Figures rounded to 2 decimal places.

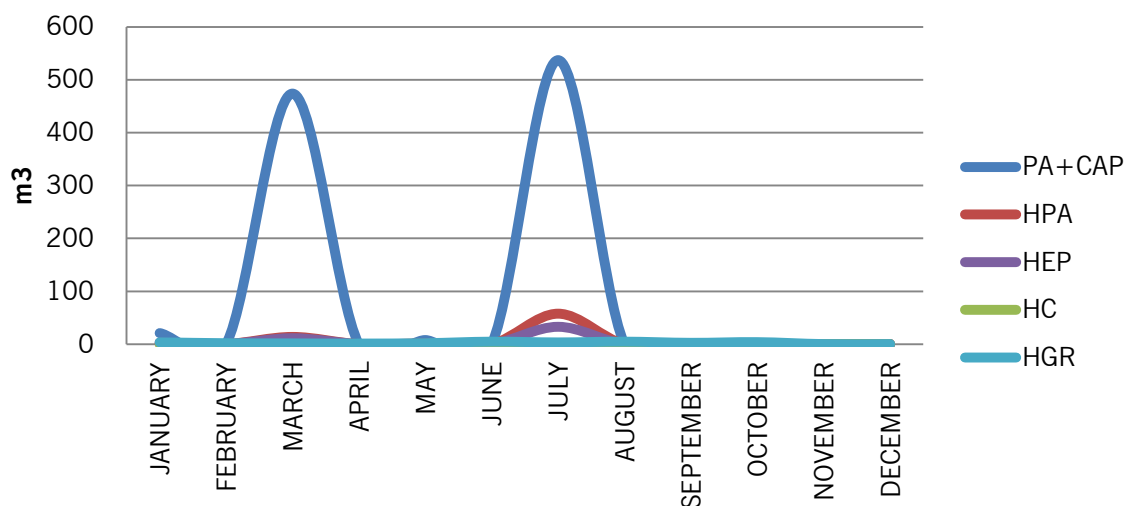
Reclaimed water for irrigation in m<sup>3</sup> per 1,000 m<sup>2</sup> landscaped area (2016)

	Reclaimed water for irrigation, m <sup>3</sup> (2016)	Landscaped area, m <sup>2</sup> (2016)
PortAventura Park	170,206	444,945
Caribe Aquatic Park		19,019
Hotel PortAventura	16,510	33,915
Hotel El Paso	16,527	21,038
Hotel Caribe	28,375	32,538
Hotel Gold River	14,637	46,712
Hotel Mansión de Lucy		5,542
Convention Centre	19,141	19,474



## OTHER WATER FOR IRRIGATION

Other water for irrigation. 2016



Other water for irrigation in m<sup>3</sup> per 1,000 m<sup>2</sup> landscaped area

	2014	2015	2016
PortAventura Park/Caribe Aquatic Park	1.00	3.98	2.24
Hotel PortAventura	0.47	9.79	2.18
Hotel El Paso	0.95	6.89	2.23
Hotel Gold River/Hotel Mansión de Lucy	0.49	5.30	0.63

Figures rounded to 2 decimal places. Hotel Caribe and the Convention Centre do not use this category of water.

## Reclaimed water for irrigation in m<sup>3</sup> per 1,000 m<sup>2</sup> landscaped area (2016)

	Reclaimed water for irrigation, m <sup>3</sup> (2016)	Landscaped area, m <sup>2</sup> (2016)
PortAventura Park	1,040	444,945
Caribe Aquatic Park		19,019
Hotel PortAventura	74	33,915
Hotel El Paso	47	21,038
Hotel Gold River	33	46,712
Hotel Mansión de Lucy		5,542



On occasion, the water coming from the WWTP is not suitable for watering parks and gardens, either due to microbiological contamination or salt concentration levels. In these situations, when the water cannot be used for irrigation, alternative sources must be found in order to ensure the survival of plant species.

This consumption and, subsequently, its indicators are totally conditioned by the quality of water sent by Vila-seca and Salou WWTP.

## WATER CATEGORISED BY DESTINATION

According to its final intended use, the water at PortAventura World can be classified as:

- Wastewater
- Storm water

The entire PortAventura World resort is built on a project of separate networks that makes it possible to direct the different types of water to the most appropriate end destination.

## WASTEWATER

All wastewater generated in the resort is conducted via a network of drains connected to the Wastewater Treatment Plant (WWTP) in Vila-seca and Salou where the water undergoes tertiary treatment in order to reclaim the water so that it can be used for irrigation within the resort, and even for some of Vila-seca's municipal parks and gardens.

Regular voluntary internal quality control checks are carried out on the wastewaters in the two sewers: Vila-seca and General (Salou). These provide us with a series of data that we can use to carry out any necessary improvements.



Below are the average values from the internal control analyses:

	Vila-seca sewer		
	2014	2015	2016
Suspended matter (mg/l)	125.7	144.3	343.8
IM (Equitox/ m <sup>3</sup> )	3.6	5.5	9.6
COD (not decanted) (mg O <sub>2</sub> /l)	248.7	504.0	832.3
COD (decanted 2h) (mg O <sub>2</sub> /l)	137.3	259.5	516.8
Conductivity at 25 °C (µs/cm)	1893.0	2203.8	2398.0
pH at 25 °C (u)	8.0	7.3	7.2
Chlorides (mg/l)	296.1	211.6	208.4
Kjeldahl Nitrogen (mg/l)	24.0	94.2	75.3
Total Phosphorus (mg/l)	5.1	9.6	13.7
Ammonium (mg/l)	15.0	95.4	62.9
Oils and fats (mg/l)	5.5	2.9	12.4

Figures rounded to 1 decimal place.

	General Sewer - Salou		
	2014	2015	2016
Suspended matter (mg/l)	322.7	149.0	150.3
IM (Equitox/ m <sup>3</sup> )	3.0	5.5	12.2
COD (not decanted) (mg O <sub>2</sub> /l)	488.0	398.0	589.5
COD (decanted 2h) (mg O <sub>2</sub> /l)	295.3	189.0	396.5
Conductivity at 25 °C (µs/cm)	3012.0	1902.0	2309.0
pH at 25 °C (u)	8.1	7.3	7.4
Chlorides (mg/l)	550.4	274.1	147.2
Kjeldahl Nitrogen (mg/l)	65.3	60.6	93.5
Total Phosphorus (mg/l)	9.6	7.1	12.4
Ammonium (mg/l)	42.6	54.5	112.0
Oils and fats (mg/l)	5.1	7.1	45.5

Figures rounded to 1 decimal place.





In Hotel El Paso and Hotel Caribe, voluntary internal controls on the quality of water discharged are carried out annually due to their opening dates.

	Hotel El Paso Sewer		
	2014	2015	2016
	August	September	September
Suspended matter (mg/l)	314.0	139.0	69
IM (Equitox/ m <sup>3</sup> )	5.2	5.8	6.4
COD (not decanted) (mg O <sub>2</sub> /l)	1340.0	508.0	661
COD (decanted 2h) (mg O <sub>2</sub> /l)	1020.0	196.0	254
Conductivity at 25 °C (μs/cm)	1950.0	3830.0	1768
pH at 25 °C (u)	5.7	6.4	7.1
Chlorides (mg/l)	219.1	674.6	868.5
Kjeldahl Nitrogen (mg/l)	19.4	32.4	57
Total Phosphorus (mg/l)	17.6	6.1	9.7
Ammonium (mg/l)	15.0	24.3	60.8
Oils and fats (mg/l)	45.6	9.5	7.2

Figures rounded to 1 decimal place.

	Hotel Caribe Sewer		
	2014	2015	2016
	August	September	September
Suspended matter (mg/l)	412.0	22.0	72
IM (Equitox/ m <sup>3</sup> )	22.7	3.0	11
COD (not decanted) (mg O <sub>2</sub> /l)	1350.0	210.0	764
COD (decanted 2h) (mg O <sub>2</sub> /l)	838.0	170.0	480
Conductivity at 25 °C (μs/cm)	2015.0	3320.0	1594
pH at 25 °C (u)	6.2	6.9	6.8
Chlorides (mg/l)	163.0	691.0	162.2
Kjeldahl Nitrogen (mg/l)	8.0	33.6	41.6
Total Phosphorus (mg/l)	19.6	4.6	6.1
Ammonium (mg/l)	7.5	24.3	48.8
Oils and fats (mg/l)	25.8	1.4	9.8

Figures rounded to 1 decimal place.



Our commitment to the environmental objective of reducing water consumption in our facilities has meant that, in certain periods, our wastewater exceeds the discharge limits for the parameter Kjeldahl Nitrogen and ammonium. Although in the 2017 internal check, the limits were not exceeded.

## STORM WATER

Typically, storm water represents a token gesture towards helping to manage water consumption given the heavy rain in the Mediterranean. However it should be highlighted that thanks to the water network within the resort that separates waste and storm water, we are able to benefit from some of the rain. PortAventura Park's main lake collects almost all of the rainfall in the park.

## 7.3 ENERGY MANAGEMENT

Electricity and gas, together with water, are the main natural resources consumed in PortAventura World.

### ELECTRICITY

PortAventura World is equipped with an energy management system that is controlled by a central computer. This computer centralises programmable automatons (PLCs) responsible for the control of the principle energy consumers distributed throughout the facilities of the park and hotels.

The facilities are also equipped with energy-saving resources, thereby reducing our carbon footprint. Some of the resources that we use are: energy-saving/LED bulbs, control of electricity consumptions devices via a computer system, etc. The hotels also include a connection key for electricity in the bedrooms, switch-off of the air conditioning when the window is opened, etc.

### SOURCE OF THE ELECTRICITY

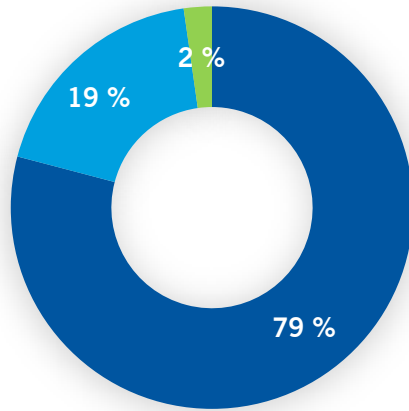
**100% of PortAventura World's electricity supply for 2016 comes exclusively from renewable energy sources without CO<sub>2</sub> emissions, Guarantee of Origin (GO).**

Electricity represents around 79% of PortAventura World's total energy consumption.



### % Energy consumption in PortAventura World in 2016

- Electricity
- Natural gas
- Others (fuels + propane gas)



## Asignación de Energía Verde y libre de Emisiones de CO2

Cepsa Gas y Electricidad S.A.U. notifica que durante el año 2016 ha redimido a favor de:

**PORT AVENTURA ENTERTAINMENT S.A.**  
36.211.472 Garantías de Origen

Equivalentes a 101.024.331 Kilovatios hora (KWh), que corresponden al 100% del suministro y proceden exclusivamente de fuentes de energía renovable sin emisiones de CO2.


Datos puntos suministro:

CUPs	Empresa	Consumo kWh
ES0031405880242001GR0F	PORT AVENTURA ENTERTAINMENT S.A.	30.688.412
ES0031405880242002GW0F	PORT AVENTURA ENTERTAINMENT S.A.	0
ES0031408019941001HP0F	PORT AVENTURA ENTERTAINMENT S.A.	3.238.127
ES0031408055646001RS0F	PORT AVENTURA ENTERTAINMENT S.A.	2.284.933
<b>TOTAL</b>		<b>36.211.472</b>

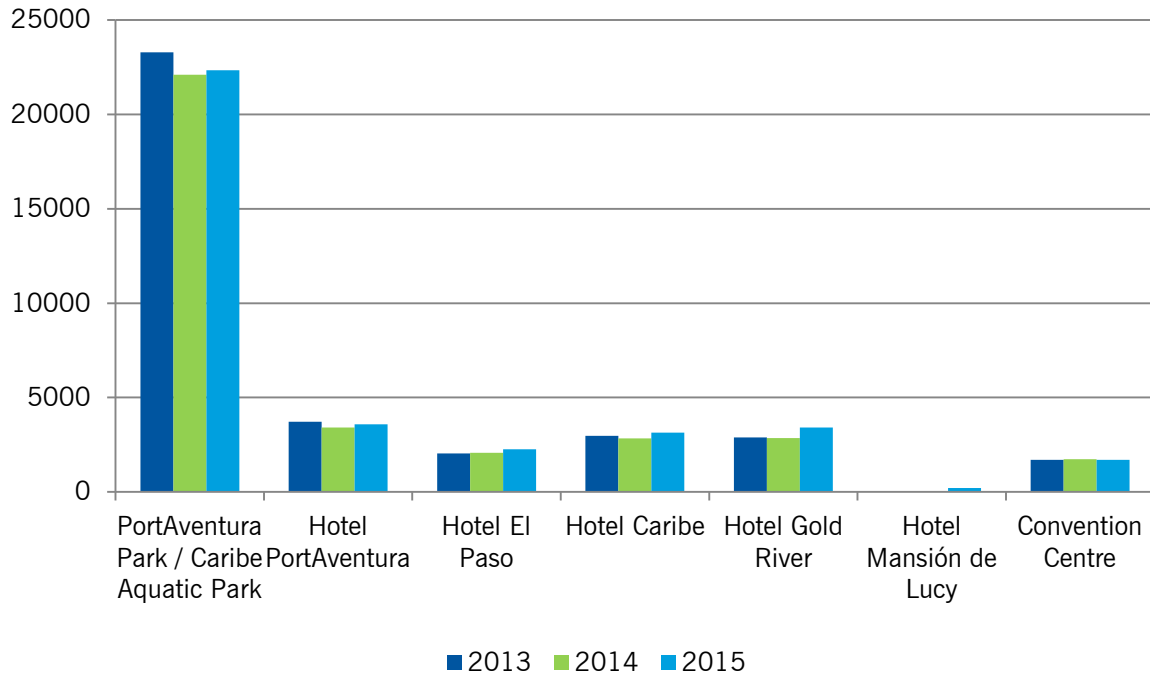
Si fuera de su interés puede acreditar la cantidad equivalente de energía renovable redimida por parte de Cepsa Gas y Electricidad S.A. a través de la página web de la CNMC, <http://gdo.cnm.es/CNF/resumenGdo.do?info=me-garantias-etiquetado-electricidad>.

D. Pablo Ronse Susena  
Director Comercializadora Electricidad

CEPSA GAS Y ELECTRICIDAD, S.A.U.  
C. G. E.  
A-28142552  
Pº de la Castellana, 259 A  
28046 MADRID




### Electricity consumption in MWh



### Electricity in MWh per 1,000 visits/room nights and year

	2014	2015	2016
<b>PortAventura Park/Caribe Aquatic Park</b>	5.95	5.67	5.70
<b>Hotel PortAventura</b>	11.23	11.83	10.90
<b>Hotel El Paso</b>	12.03	12.25	11.18
<b>Hotel Caribe</b>	13.73	14.43	14.51
<b>Hotel Gold River</b>	12.23	14.13	15.15
<b>Hotel Mansión de Lucy</b>	0	15.47	19.52
<b>Convention Centre</b>	26.97	20.99	19.39

Figures rounded to 2 decimal places.





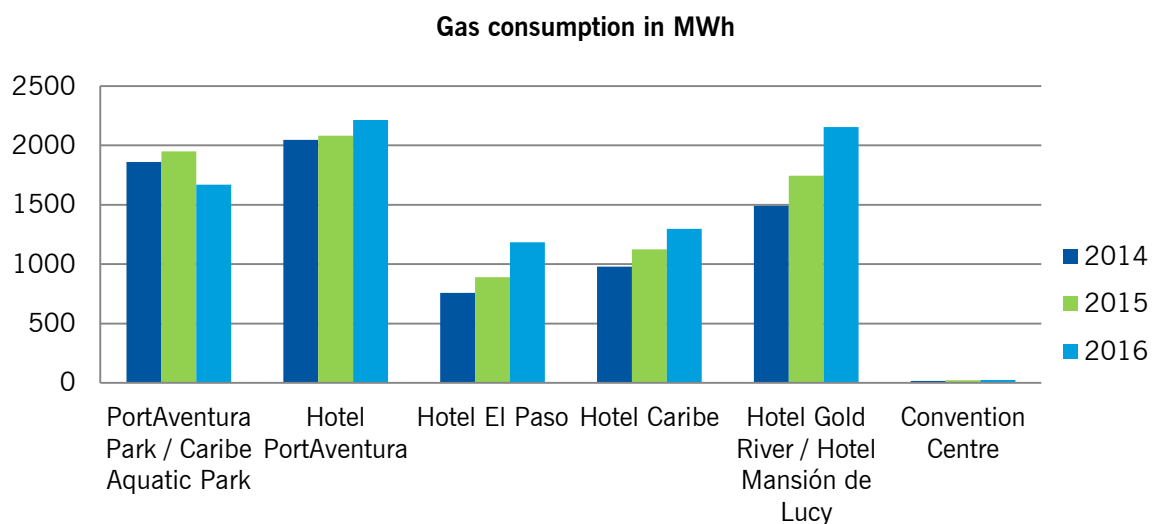
Electricity in MWh and visits/room nights (2016)

	Electricity, MWh (2016)	Visits/room nights (2016)
PortAventura Park	22,222.72	3,528,908
Caribe Aquatic Park		367,993
Hotel PortAventura	3,404.62	312,362
Hotel El Paso	2,284.93	204,362
Hotel Caribe	3,238.13	223,126
Hotel Gold River	3,379.21	223,005
Hotel Mansión de Lucy	276.66	14,172
Convention Centre	1,405.20	72,461



## NATURAL GAS

In our facilities, this type of energy is used mainly to heat water for personal hygiene and for use in the kitchens.



### Natural gas in MWh per 1,000 visits/room nights and year

	2014	2015	2016
<b>PortAventura Park/Caribe Aquatic Park</b>	0.50	0.49	0.43
<b>Hotel PortAventura</b>	6.71	6.86	7.09
<b>Hotel El Paso</b>	4.42	4.82	5.79
<b>Hotel Caribe</b>	4.74	5.16	5.81
<b>Hotel Gold River + Hotel Mansión de Lucy</b>	6.38	6.82	9.08
<b>Convention Centre</b>	0.26	0.28	0.33

Figures rounded to 2 decimal places.



### Natural gas in MWh and visits/room nights (2016)

	Natural gas, MWh (2016)	Visits/room nights (2016)
PortAventura Park	1,670.33	3,528,908
Caribe Aquatic Park		367,993
Hotel PortAventura	2,214.91	312,362
Hotel El Paso	1,183.27	204,362
Hotel Caribe	1,297.23	223,126
Hotel Gold River	2,153.96	223,005
Hotel Mansión de Lucy		14,172
Convention Centre	23.83	72,461

### OTHER ENERGIES

	2014	2015	2016
Fuels (MWh)	1,129	1,290	1,032
Propane gas (MWh)	148	64	84

The indicator for consumption per number of visits is not representative due to the high number of visits to the resort.



## 7.4 AIR EMISSIONS AND NOISE

Taking into consideration all of PortAventura's activities, air emissions are irrelevant and environmental impact is very low. However we do pay special attention to the control of this aspect.

The emission points are:

- Diesel steam train locomotives (two engines).
- Natural gas-powered central heating and/or hot water boilers.
- Carpentry and painting.
- Motor vehicles.
- Combustion of natural gas for Templo del Fuego and FiestAventura.

For the first three, measurements are taken of the emissions into the atmosphere every three years, the last measurement was taken in 2015, and the corresponding results are within legal limits.

The final two are considered to be diffuse emissions and are managed by controlling consumption. In regard to noise pollution, noise measurements have been taken every 3 years from the boundaries with the closest neighbours, the last measurement was taken in 2015.





## 7.5 CARBON FOOTPRINT / GREENHOUSE GAS EMISSIONS

Since 2008 PortAventura World has been working on calculating the carbon footprint of its activities and quantifying the emissions of greenhouse gases expressed as tonnes of CO<sub>2</sub>. Calculations are based on the current annual version of “*Guia pràctica per el càlcul d'emissions de gasos amb efecte hivernacle (GEH)*” [practical guide to calculating the emissions of greenhouse gases (GHG)] issued by the Catalan Office for Climate Change.

- This evaluation includes the following categories in accordance with international protocols:
- Scope 1. Direct emissions: emissions from the transport of own fleet and the combustion of fossil fuels (ACS/heating boilers), fugitive emissions of fluorinated gases from refrigeration equipment.
- Scope 2. Indirect emissions associated with electricity consumption.
- Scope 3. Other indirect emissions: treatment of municipal waste and consumption of drinking water.

	<sup>(2)</sup> 2014	2015	<sup>(3)</sup> 2016
<b>Total annual greenhouse gas emissions expressed as equivalent tonnes of CO<sub>2</sub></b>	<b>13,233</b>	<b>16,350</b>	<b>5,565</b>
<b>* Annual greenhouse gas emissions expressed as equivalent tonnes of CO<sub>2</sub> per 1000 room nights and year</b>	<b>2.82</b>	<b>3.28</b>	<b>1.13</b>

<sup>1</sup> Figures rounded to 2 decimal places.

<sup>2</sup> 2014 assessment does not include emissions from drinking water consumption.

<sup>3</sup> In 2016, indirect emissions associated with electricity consumption are 0 tonnes CO<sub>2</sub>/kWh because 100% of the supply comes exclusively from renewable sources without CO<sub>2</sub> emissions, Guarantee of Origin (GO).



## 7.6 BIODIVERSITY

m<sup>2</sup> constructed area:

	2014	2015	2016
PortAventura Park	262,453.72	262,692.84	262,702.07
PortAventura Caribe Aquatic Park	5,832.36	5,832.36	5,832.36
Hotel PortAventura	33,839.91	33,839.91	33,839.91
Hotel El Paso	26,827.69	26,827.69	26,827.69
Hotel Caribe	30,708.47	30,708.47	30,708.47
Hotel Gold River/Hotel Mansión de Lucy	32,521.97	36,851.04	36,851.04
Convention Centre	13,588.61	13,588.61	13,588.61

Figures rounded to 2 decimal places.





## 7.7 EFFICIENT CONSUMPTION OF CERTAIN MATERIALS

Materials	Environmental Aspect	2014	2015	2016
Chemical products for swimming pool and lake maintenance (t)	Consumption of chemical products	478.25	*770.68	*664.93
Lighting (units)	Light emissions into the atmosphere	16,915	17,534	19,441
Bags for sale of products in resort shops (Kg)	Use of natural resources	10,741	10,618	11,156
Cleaning products (l)	Consumption of chemical products	59,799	*94,695	*109,088
Oils and lubricants (l)	Chemical product consumption	9,705	9,831	**12,165

The indicator for these materials per number of visits is not representative due to the high number of visits to the resort.

\* From 2015, it is incorporated into the consumption of our service providers for chemicals used in the maintenance of swimming pools, lakes and cleaning products.

\*\* In 2016, the consumption of oils and lubricants in the Ferrari Land park was incorporated.





## 8 ENVIRONMENTAL LEGISLATION

PortAventura World has contracted the services of an external specialist company for the identification and evaluation of compliance with applicable legislation and other requisites that it has voluntarily subscribed to.

Computerised tools are used to identify the legislation applicable to the organisation on environmental and industrial safety matters on an international, European, national, regional and local scale, as well as all other requirements.

Experts carry out an annual review to verify legal compliance, in order to guarantee that the company is operating under the terms established by law.

The following table shows some of the legal requisites that must be strictly observed by PortAventura World:

Legislation	Legal requirements
<b>Law 20/2009, of 4<sup>th</sup> December, on prevention and environmental control of activities.</b>	Enacts the decision for PortAventura World's environmental authorisation of 31 <sup>st</sup> July 2013 and its subsequent resolutions of non-substantial changes, for example, Angkor (21/01/2014), expansion of Hotel Gold River (06/10/2014) and Hotel Mansión de Lucy (23/01/2015).
<b>Royal Legislative Decree 1/2001, of 20<sup>th</sup> July, which approves the Consolidated Water Act.</b>	Grants the Reclaimed Water Permit, granting permission to use treated water from Vila-seca and Salou WWTP for irrigation of green areas in the parks and hotels.
<b>Decree 130/2003, of 13<sup>th</sup> May, which approves Public Sanitation Service Regulations.</b>	Provides for 2013 environmental authorisation, including the permit for disposal of wastewaters.
<b>Decree 176/2009, of 10<sup>th</sup> November, which approves Regulation of Law 16/2002, of 28<sup>th</sup> June, on protection against sound pollution and brings in line its annexes.</b>	In 2015 noise measurements were taken from the boundaries with the closest neighbours.





Legislation	Legal requirements
<p><b>Technical instruction for the arrangement of emission sources to perform emission measurements (IT AT 2).</b></p>	<p>Arrangement of the emission sources to comply with this instruction was carried out in 2013. Control of emission sources was performed in 2015, although there is no legal obligation to perform this control.</p>
<p><b>Regulation (EU) 517/2014 of the European Parliament and Council, 16<sup>th</sup> April 2014 on fluorinated greenhouse gases and by which Regulation (EC) No 842/2006 is repealed.</b></p>	<p>Leak checks of equipment containing fluorinated gases are performed according to the frequency established in the Regulation on the basis of equivalent tonnes of CO<sub>2</sub>.</p>
<p><b>Decree 190/2015, of 25<sup>th</sup> August, development of Law 6/2001 of 31<sup>st</sup> May, environmental arrangement of lighting for the protection of the night environment.</b></p>	<p>Application for new lighting facilities and devices, and modifications and extensions of existing facilities. The facilities which require the necessary authorisations before the date of entry into force of this Order and which come into operation no later than twelve months after that date must meet the requirements of the regulations in force at the time of the request.</p>
<p><b>Law 22/2011, of 28<sup>th</sup> July, on contaminated soils and wastes.</b></p>	<p>Provides for management of waste and promotes measures to prevent its generation, as well as mitigating adverse impacts on human health and on the environment associated with generation and handling, prioritising waste-to-energy management.</p>
<p><b>Royal Decree 180/2015 of 13<sup>th</sup> March regulating transportation of wastes in Spain.</b></p>	<p>Contracts and prior notifications with the corresponding waste managers are available.</p>
<p><b>Royal Decree 56/2016, of 12<sup>th</sup> February, which transposes Directive 2012/27/EU of the European Parliament and of the Council, of 25<sup>th</sup> October 2012, on energy efficiency, with regard to energy audits, accreditation of energy service providers and auditors and the promotion of the efficiency of the power supply.</b></p>	<p>The corresponding energy efficiency audit has been carried out.</p>
<p><b>Resolution TES/1113/2016, of 19<sup>th</sup> April, establishing environmental criteria for awarding hotel operators the Environmental Quality Standard.</b></p>	<p>In February 2017 the Environmental Quality Standard was renewed for Hotel PortAventura, Hotel El Paso, Hotel Caribe and Hotel Gold River. Hotel Mansión de Lucy was awarded the standard for the first time in March 2016, and currently all 5 hotels in the resort hold this quality guarantee.</p>



Legislation	Legal requirements
<b>Royal Decree 235/2013, of 5<sup>th</sup> April, which approves the basic procedure for the certification of the energy efficiency of buildings.</b>	Applicable to new builds: Hotel Gold River, Chikitienda, Angkor, The Callaghan's. It does not currently apply to all the other buildings.
<b>Decree 30/2015, of 3<sup>rd</sup> March, which approves the catalogue of activities and centres obliged to adopt self-protection measures and establishes the content of these measures.</b>	Approved by Civil Protection on 8 <sup>th</sup> October 2013. On 18 <sup>th</sup> March 2016 the updated plans were registered to include The Callaghan's belonging to the Hotel Gold River and the expansion of parking for visits.
<b>Royal Decree 1942/1993, of 5<sup>th</sup> November, which approves Fire Protection Regulations.</b>	Maintenance of fire protection facilities and the quarterly, six-monthly and annual review of fire protection systems, as well as the review of fire hydrants every five years.
<b>Royal Decree 238/2013, of 5<sup>th</sup> April, amending certain articles and technical instructions for the Regulation of Thermal Installations in Buildings, approved by Royal Decree 1027/2007 of 20<sup>th</sup> July.</b>	Inspection of the energy efficiency of air conditioning units with output equal to or greater than 12 kW. Perform inspections of thermal facilities for heating and hot water systems with output equal to or greater than 20 kW.
<b>Royal Decree 138/2011, which approves Safety Regulation for refrigerator units and their supplementary technical instructions.</b>	Provides for legalisation of refrigeration systems and corresponding reviews.
<b>Royal Decree 337/2014, of 9<sup>th</sup> May, in approval of the Regulation on technical conditions and safety guarantees in high voltage electrical installations and Supplementary Technical Instructions ITC-RAT 01 to 23.</b>	Regulates legalisation of high voltage installations and associated inspections.
<b>Royal Decree 97/2014 of 14<sup>th</sup> February regulating road transport of hazardous goods in Spain.</b>	Orders the Security Adviser to deliver the annual report and annual technical visit with report to the competent body in the first quarter of the year.





## 9 VALIDATION

**Environmental declaration updated** in accordance with the requirements established in Annex IV. Regulation (EC) No. 1221/2009 of the EUROPEAN PARLIAMENT AND COUNCIL of 25<sup>th</sup> November 2009 on the voluntary participation by organisations in a community eco-management and audit scheme (EMAS), repealing Regulation (EC) No 761/2001 and Decisions 2001/681/EC and 2006/193/EC of the Commission.



**TÜV Rheinland Ibérica,**  
Inspection, Certification and Testing, S.A.  
Organisation no. ES-V-0010



**PortAventura®**  
**WORLD**

**PARKS & RESORT**

AV. ALCALDE PERE MOLAS, KM 2. 43480 VILA-SECA  
TEL. +34 977 77 90 00 | FAX +34 977 77 91 11



**WWW.PORTAVENTURAWORLD.COM**