



**CONFERENCE DESTINATION
1 HOUR FROM BARCELONA**

MEDITERRANEAN MEETINGS

www.portaventuraevents.com





Table of contents

- 1. PortAventura Business & Events**
- 2. The Business & Events Team**
- 3. Location**
- 4. Resort map**
- 5. Why PortAventura Business & Events?**
 - 5.1. Convention Centre
 - 5.2. Onsite catering
 - 5.3. Hotel facilities
 - 5.4. PortAventura Park: exclusive opening of areas
 - 5.5. Beach Club & Golf
 - 5.6. Teambuilding activities
 - 5.7. Cirque du Soleil: a spectacular complement to any event
 - 5.8. Ferrari Land
- 6. Additional services**
- 7. Our clients**
- 8. Corporate and Environmental Social Responsibility**
- 9. PortAventura Foundation**
- 10. PortAventura Business & Events in figures**



A space for all possibilities

PortAventura Convention Centre is a space that offers all the possibilities for organising and holding events, both large and small.

PortAventura Convention Centre is not only one of the best-equipped facilities in southern Europe, it is also a concept focused exclusively on hosting corporate events. With quick and easy access to its five hotels, there are multi-function rooms for every setup, nestled in the Costa Daurada, **only one hour south of Barcelona.**

PortAventura Convention Centre has ample, comfortable and versatile areas available for use. The structure is completely integrated into the Mediterranean setting and has been designed with particular attention to sustainability and respect for the environment. Natural light in all areas of the Centre creates a relaxed atmosphere with the focus on energy conservation.

The building is fully accessible to people with disabilities. Furthermore, all rooms have outside access, enabling visitors to enjoy unforgettable views of both the sea and the golf courses.

Everything a company needs to turn any event into a complete success is within your reach at PortAventura Business & Events:

A large convention centre covering an area of more than 13,000 m²- PortAventura Convention Centre is versatile, perfectly equipped with cutting-edge technology and has 18 multi-functional rooms with the capacity to hold up to 3000 people at the same time.

A unique concept for hosting corporate events

PortAventura B&E

Four 4-star hotels and one 5-star hotel (Mansión de Lucy) with a total of more than 2,100 rooms throughout the resort; High-quality onsite catering facilities, at over 30 restaurants; PortAventura Park, a leisure park with different theme areas that can be reserved exclusively for your enjoyment. Golf and Teambuilding activities and shows – all immersed in the charm of a Mediterranean setting; Excellent transport links and less than 1 hour from Barcelona Airport.



Your success is our success

A team of qualified professionals with experience in the events sector and access to the best tools to shape any project

PortAventura Convention Centre has a team of **professionals** available to companies for development of events. With a single point of contact that centralises all aspects of knowledge and management, our team of professionals handles each project to make it a reality.

We work to turn an event
into a memorable experience

PortAventura B&E

Creativity, imagination and innovative solutions are the key to managing each event. Extensive experience in the **events, conventions and incentives** industry allow us to meet any requirement, challenge or obstacle that may arise in the process of developing the project together with the client company.

Finding the perfect location, optimal use of the various rooms and spaces, layouts, catering, parallel activities... We take everything into account to make your event unique and a memorable experience. Because we know that the key is not to work for our clients, but to work with our clients.



The best of the Mediterranean

Located on the Costa Daurada, with an extraordinary climate and only one hour south of Barcelona

PortAventura World is located one hour from Barcelona, right next to the district capitals of Reus and Tarragona.

Nestled in **the heart of the Costa Daurada**, an area known throughout the world for its beaches, climate and cuisine.

It only takes a few minutes to hop over to Reus, an extraordinary commercial district featuring significant examples of Gaudí's exceptional architecture. Similarly, and also only a short distance away, Roman Tarragona is a prized addition to a visit through an ancient city.

The beaches and charm turn the small coastal villages that surround PortAventura into the perfect attraction to be enjoyed after a day spent at work or attending a conference, convention or business meeting. The year-round **Mediterranean climate** makes it possible to programme events making the most of the exceptional gardens and outdoor areas available.

The PortAventura World setting offers a wide range of possibilities

PortAventura B&E



PORTAVENTURA CONVENTION CENTRE

Decimals: 41.0980667, 1.153956055

Degrees: Latitude 41°05'53"N

Longitude: 01°09'14"E

GPS Coordinates:

UMT (X=344975,1205; Y=4551203,34)

PORTAVENTURA WORLD

PORTAVENTURA CONVENTION CENTRE

Decimals: 41.0980667, 1.153956055

Degrees: Latitude 41°05'53"N

Longitude: 01°09'14"E

GPS Coordinates:

UMT (X=344975,1205; Y=4551203,34)

PORTAVENTURA PARK

Decimals: 41.098056, 1.153889

Degrees: Latitude 41°05'53"N

Longitude: 1°09'14"E

HOTEL PORTAVENTURA

Decimals: 41.083039, 1.152331

Degrees: Latitude 41°4'58.9398"N

Longitude: 1°9'8.391"E

HOTEL EL PASO

Decimals: 41.086722, 1.147862

Degrees: Latitude 41°5'12.1992"N

Longitude: 1°8'52.3026"E

HOTEL CARIBE

Decimals: 41.082848, 1.146187

Degrees: Latitude 41°4'58.2522"N

Longitude: 1°8'46.2732"E

HOTEL GOLD RIVER Y MANSIÓN DE LUCY

Decimals: 41.082848, 1.146187

Decimals: 41.09184, 1.153994

Degrees: Latitude 41°5'30.6234"N

Longitude: 1°9'14.3778"E

FERRARI LAND

Decimals: 41.08622, 1.153139

Degrees: Latitude 41°5'10.3914

Longitude: 1°9'11.2998

GETTING HERE

By car

Toll motorway

- AP-7, desde Francia y la Jonquera o desde La Jonquera or the south of Spain. Exit 35 is direct to PortAventura.

- Via the C-32, from Barcelona or El Vendrell. Join with the AP-7.

- Via the AP-2, if you are coming from the Basque Country or Zaragoza. Join with the AP-7.

Country roads

- N-240 Tarragona-Lleida
- T-11 Tarragona-Teruel
- N-340 Barcelona-Valencia

By train

PortAventura has its own station with links to other main destinations.

By AVE train

The AVE Camp de Tarragona station is 20 minutes from PortAventura and operates a daily bus service.

By plane

Reus Airport. Only 15 minutes from Reus airport (Tarragona).

Barcelona Airport.

Only 1 hour from PortAventura.

Girona Airport.

PortAventura is 2 hours away by car.

By bus

The company Plana operates several daily bus services between PortAventura and surrounding areas (Cambrils, Salou, Vila-seca, La Pineda, Reus, Tarragona...), and also Barcelona.



Leisure and business

PortAventura Business & Events bring together in a single space all the services and facilities required for any type of event.



Tailor-made events in a Mediterranean setting

Modular and versatile meeting rooms equipped with cutting-edge technology and ideal for holding any type of event

.1. Convention Centre

PortAventura Convention Centre is a space covering an area of 13,000 m² for large and small events to accommodate from 10 to 3000 attendees. Everything is designed so that any company can develop its project in an easy, convenient and effective manner. Natural light in most of the rooms, a Mediterranean environment, spacious outdoor gardens and views overlooking the sea and golf courses. PortAventura Convention Centre has two floors with modular, versatile and fully multi-functional rooms. Each space brings its own characteristics to the event and can be customised depending on the project.

Principal characteristics

- Capacidad: de 10 a 3.000 personas.
- Capacity: from 10 to 3000 people.
- Natural light in all spaces.
- An exclusive Mediterranean setting with views overlooking the sea and the golf courses.
- Excellent links to the rest of the resort.
- Air-conditioned amphitheatre for 150 people.
- 13,000 m² over 2 floors with modular, versatile and fully multi-functional rooms.
- Retractable/mobile tiered seating with 1242 chairs.
- Rooms with projection, audio and video conferencing equipment.
- Technical ceilings able to withstand hanging heavy items.
- Content manager.
- LCD screens at the entrance to each room.
- Wi-Fi.
- Business & Events catering services.
- Direct loading bay.
- Private parking.



Exceptional spaces

Alexandria

Ground floor. At 2800 m2, the Alexandria room is the largest space that we have to offer and can be converted into an auditorium for 1200 people. There is direct loading access to the room in order to facilitate the entry of large structures. Modular and configurable.

Barcino

Ground floor. The Barcino room has a surface area of 312 m2 with a terrace leading directly outside and can be converted between different spaces. With maximum capacity for 378 attendees. Can be set up as a schoolroom, theatre and banquet, cocktail and cabaret areas.

Harvard

1st Floor. The Harvard room has a surface area of 250 m2 and has been designed as a fully-equipped auditorium. Accommodates up to 150 attendees.

Tarraco

1st Floor. The Tarraco room, with a surface area of 87 m2, is a Premium space. Ideal for boards of directors and executive meetings, smaller meetings and high-level and small group activities.

Damascus

1st Floor. The Damascus room has a surface area of 675 m2 with a terrace leading directly outside. With maximum capacity for 740 attendees. Can be set up as a schoolroom, theatre and banquet, cocktail and cabaret areas.

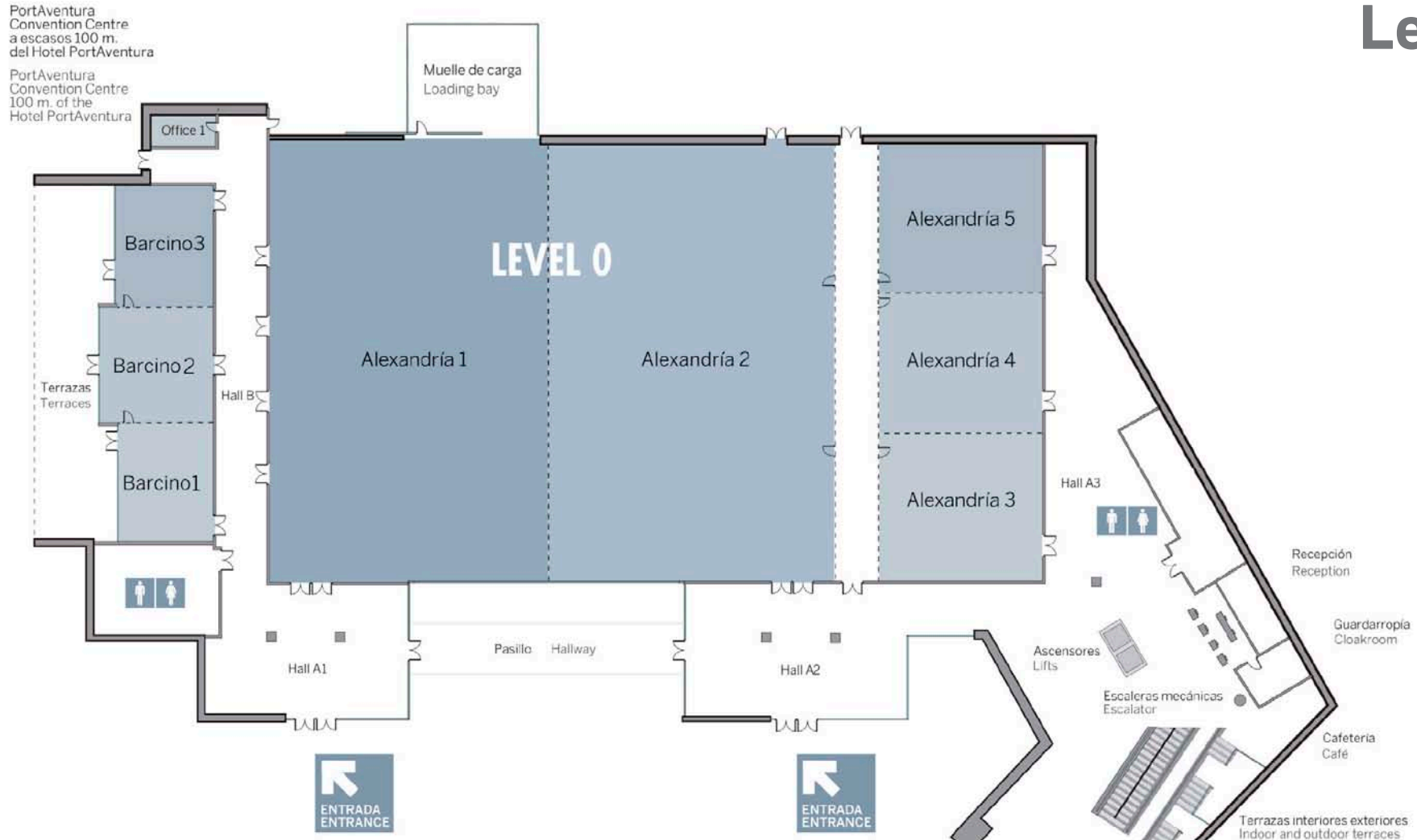
Cartago

1st Floor. The Cartago room has a surface area of 1870 m2 and can be converted into five different spaces. With maximum capacity for 1950 attendees. Can be set up as a schoolroom, theatre and banquet, cocktail and cabaret areas.

Versatile, modular
and multi-functional
spaces

PortAventura B&E

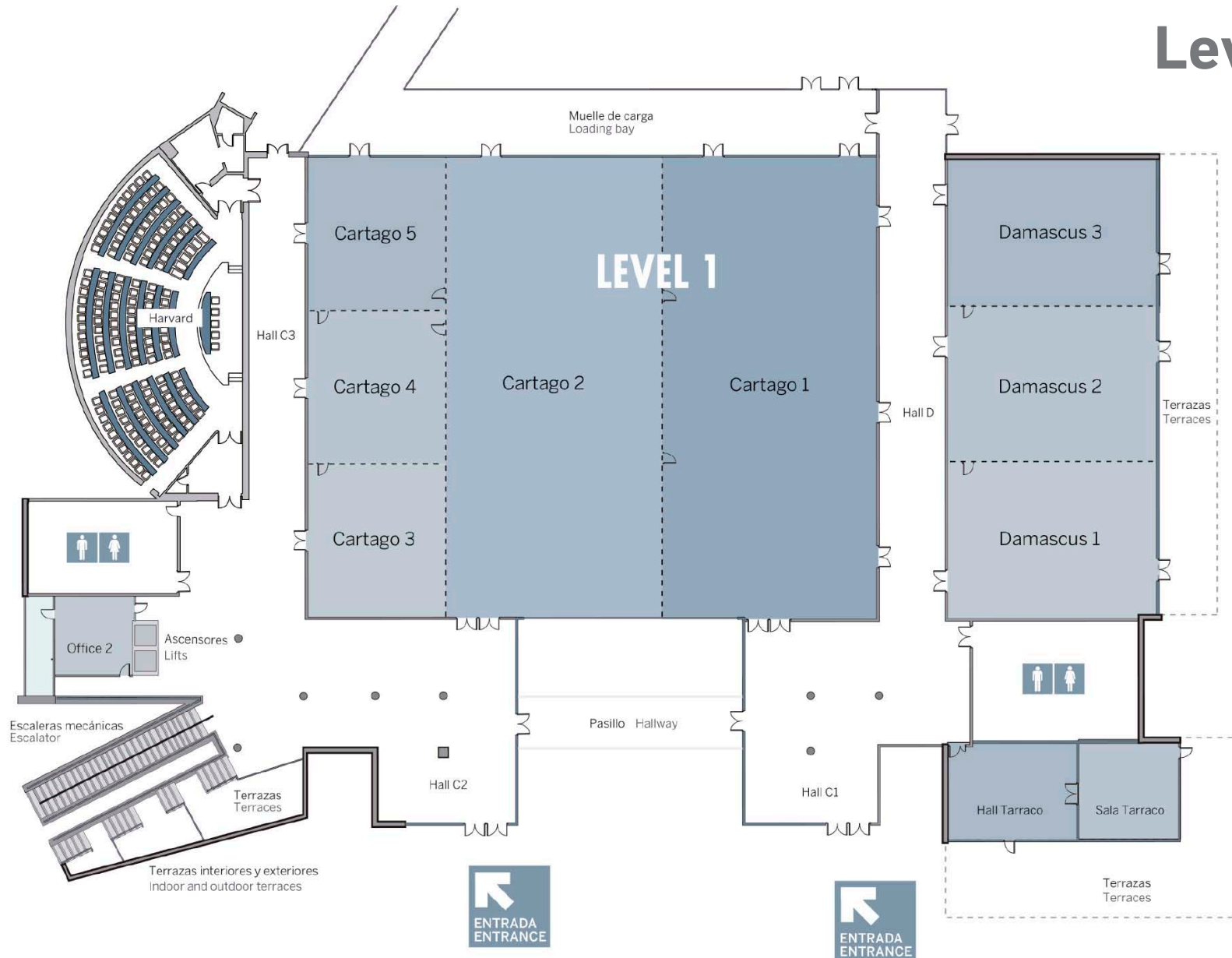
Level 0



	SURFACE m ² /sqm	Height m.	Theatre	School	U ⁻	Banquet	Cocktail	Cabaret
Alexandria 1	1.016	6.85	1200	740	-	690	820	400
Alexandria 2	1.038	6.85	1200	740	-	710	840	410
Alexandria 3	198	4.88	210	110	30	150	180	60
Alexandria 4	201	4.88	210	110	30	150	180	60
Alexandria 5	174	4.88	180	90	30	130	150	40
Additional meeting area**	132		-	-	-	-	-	-
TOTAL (con pasillo de servicio/with service hallway)	2.759		3.100	1.850	-	1.960	2.320	1.100
Alexandria 1 (gradería/tiered seating)	436		625					
Alexandria 2 (gradería/tiered seating)	436		625					
TOTAL	872		1.250					
Barcino 1	98	3.47	98	45	24	70	90	30
Barcino 2	116	3.47	98	45	24	80	100	36
Barcino 3	97	3.47	98	45	24	70	80	30
TOTAL	312		378	171	-	230	270	132
Office 1	18	3.30	8			(imperial/board)		

*Este espacio no se comercializa individualmente.
*This space is not marketed individually.

Level 1



	SURFACE m ² /sqm	Height m.	Theatre	School	"U"	Banquet	Cocktail	Cabaret
Cartago 1	685	4,27	720	440	42	500	590	300
Cartago 2	694	4,27	720	440	42	520	610	312
Cartago 3	148	4,27	162	72	24	110	130	54
Cartago 4	152	4,27	162	72	24	110	130	54
Cartago 5	148	4,27	162	72	24	110	130	54
TOTAL	1.870		1.950	1.200	-	1.360	1.600	800

	SURFACE m ² /sqm	Height m.	Theatre	School	"U"	Banquet	Cocktail	Cabaret
Damascus 1	221	4,27	170	110	30	150	200	90
Damascus 2	226	4,27	180	110	30	150	200	90
Damascus 3	228	4,27	180	110	30	150	200	90
TOTAL	675		740	450	-	500	600	280

Harvard	259	3,60	150 (anfiteatro / amphitheatre)					
Tarraco	70		14 (imperial / board)					
Office 2	48	3,80	12 (imperial / board)					

5.2. Onsite catering

PortAventura Business & Events offers an excellent and varied range of onsite catering services. Our catering services are perfectly suited to the different needs of clients: gala

menus, working menus, coffee breaks, buffets, aperitifs, finger buffets and Mediterranean cocktails. From the minimalist decor of the Lumine restaurant to the themed setting of the

Saloon, and from a cosy corner in La Cascada to the vast space of the rooms and terraces of the Convention Centre.

RESTAURANTS

	Banquet	Cocktail	Buffet	Cocktail terrace	Outdoor banquet
HOTEL **** PORTAVENTURA					
Pica-pica	70	100			
Port Regata	144				
Buffet del Port			350		
Buffet del Mar			280		
La Cascada	32				
Sala El Bosc	180	230			
HOTEL **** CARIBE					
El Tinglado	150	200			
Puerto Viejo	90	120			
El Bohio			406		
La Piazza	157				
HOTEL **** GOLD RIVER					
Buffet Gran Hall			405		
Grand Opera	180				
Old West Buffet (Hotel The Callaghan's)			186		
New Texas	220				
Saloon	100				
HOTEL ***** MANSIÓN DE LUCKY					
Lucy's Cuisine	60				

	Banquet	Cocktail	Buffet	Cocktail terrace	Outdoor banquet
PORTAVENTURA PARK					
The Iron House	110				
Emma's House	90				
La Hacienda	220			1000	100
Racó de Mar	150				
Vinosfera	100				
Saloon FW	600	150			
La Cantina	700	900	950		
	150				
Bora Bora	Mesa cuadrada				
	400	150			
The Old Steak House					
Jeremia's food	100		400		
Marco Polo				200	
LUMINE RESTAURANT					
Lumine	250				
	35	550			130
Lumine Reservado			60		
	Special Area				
LUMINE					
Lakes (Golf Norte)	110				
	80	250			
Hills (Golf Sur)			800		80
LUMINE BEACH					
Beach Club		1000			
Sole Mare		800			
Volcano		1450			



5.3. Hotel facilities

Tras una jornada o reunión de trabajo, After a workday or business meeting, team-building activity or product presentation, accommodation takes on an important role and comfort is paramount. PortAventura's hotel facilities include over 2000 rooms in its

5 hotels, 4* with one 5* hotel, located a few metres from the Convention Centre. What's more, to make your stay particularly special, Premium services are available at Club San Juan and Mansión de Lucy.

	HOTEL CAPACITIES				
	TOTAL	DOUBLES	TWIN	HANDICAPPED	SUITE
HOTEL PORTAVENTURA 500 ROOMS	483	198	276	8	1
THEME ROOMS WAF	17	8	9	0	0
HOTEL GOLD RIVER 549 ROOMS	423	128	285	10	0
CABAÑAS	48	24	24	0	0
CALLAGHAN'S	78	0	78	0	0
HOTEL MANSIÓN DE LUCY 31 ROOMS	31	16	13	0	2
HOTEL CARIBE 497 ROOMS	473	207	256	8	0
CLUB SAN JUAN	26	15	11	0	0
HOTEL EL PASO 501 ROOMS	503	345	148	8	0



SALA EL BOSCO

Meeting Rooms	m ²	Height	Dimensions	Cocktail Banquet	Theatre	School
El Bosc	258	4,7	21,5 x 12	180	230	150
El Bosc 1	84	4,7	7 x 12	60	60	40
El Bosc 2	174	4,7	14,5 x 12	120	190	105

MEETING ROOMS

SPACE	Surface	Banquet	Cocktail
Cartagena A	194	130	210
Puerto Príncipe B (B1+B2)	158	110	180
Puerto Príncipe B1	79	-	90
Puerto Príncipe B2	79	-	90
Kingston C (C1+C2)	166	110	180
Kingston C1	78	-	90
Kingston C2	88	-	90
Hall Kingston	52	-	45
A + B2	273	180	300
A + B	352	240	390
A + B + C1	430	240	480
B + C1	236	160	230
C + B1	245	160	230
B + C	324	220	360
La Habana (A + B + C)	518	350	570

Hotel Caribe****

A large white sand swimming pool and pleasant gardens are at the heart of this extraordinary hotel that recreates the charm and ambience of the Caribbean. From here it is possible to access the Convention Centre on foot in only a few minutes.

Hotel PortAventura****

Hotel PortAventura recreates life in a Mediterranean fishing village. Cottages surrounded by magnificent gardens with sweeping curves and a splendid lake to delight participants at the event. It has direct access to the Convention Centre.



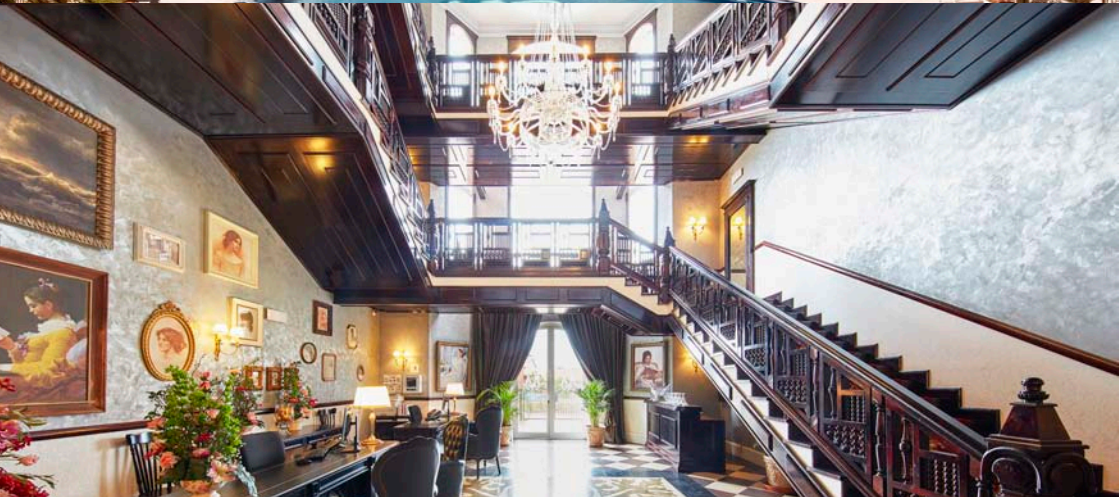


Hotel Gold River****

Only a few minutes from the Convention Centre. With 502 rooms and direct access to PortAventura Park. Its architecture is reminiscent of a typical Far West town following the Gold Rush that brought many Europeans to America in search of the precious metal and a better life. Its design and 3 swimming pools linked by rivers and lakes are a huge attraction for visitors.

Hotel El Paso****

For the event organiser who is looking for a hotel that bases its look on a traditional Mexican hacienda, Hotel El Paso is the obvious choice with spacious gardens and terraces faithfully replicating colonial Mexico.



Hotel Mansión de Lucy****

Located at the centre of Main Street, next to Hotel Gold River. Undoubtedly distinguished by its elegance, it houses 31 exclusive rooms that offer all kinds of high-end features. Discover the exclusivity of the most majestic and elegant of our hotels, with spacious rooms of high quality and all manner of extras that will make your stay a dream experience.

The Callaghan's****

PortAventura's 78 new Deluxe Callaghan rooms are located in a new annexe to the PortAventura Hotel Gold River, built in 2015, which has its own reception and offers the same services as the main Hotel Gold River (catering services, shop, pools ...) as well as a number of exclusive services.



5.4. PortAventura: exclusive opening of areas

The PortAventura Business & Events team has developed a unique initiative: **exclusive opening of PortAventura theme areas**.

This service provides attendees with unrepeatable experiences. Not only with the opportunity to access areas of the park made available to you, but also to feel the excitement of attractions, private shows and certain restaurants, in order to preserve the intimacy of the event and provide added value.

This service allows guests exclusive access on famous attractions such as Dragon Khan. The secret of the event's success lies in its differential value; in making sure that the attendees remember it thanks to all the unique moments experienced.

PortAventura Park covers 100 hectares divided into six theme areas: Mediterrània, Polynesia, China, Mèxico, Far West and SésamoAventura. There are 39 attractions and more than 100 daily show performances.

Mediterrània: this area welcomes visitors to the park is themed using original materials to recreate buildings typically found in Mediterranean villages.

Polynesia: authentically replicates the style of 19th century Polynesia to offer the enjoyment of one of the most exotic experiences of the park.

Mèxico: an encounter with the ancient Mayan culture and colonial Mexico. It has a lot of monuments, crafts and attractions inspired by Mexican culture.

China: in this area we can take a trip through the farming town of Ximpang. It hosts the most prominent and iconic attractions of the park such as Dragon Khan and Shambhala.

Far West: inspired by a real city of the old American West, this theme area offers a wide variety of options for both dining and leisure.

SésamoAventura: this area can be defined as the most family-oriented of PortAventura Park. Since opening in 2011, the area has been mainly aimed at children.

Opening of the Far West Area

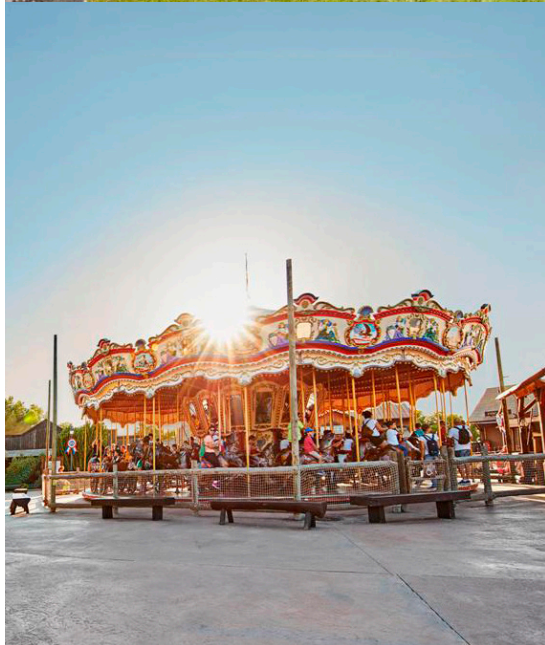
This area recreates in full detail an authentic Far West town. It hosts the attractions Carousel, Stampida, Wild Buffalos, Crazy Barrels, own restaurants, shows and drinks kiosks.

Opening of the Far West & China Areas

Possible combination between the Far West and China theme areas. From the American West to ancient China. It hosts the attractions Shambhala, Dragon Khan, El Diablo-Tren de la Mina, Carousel and Stampida, own restaurants, shows and drinks kiosks.

Opening of the Far West & México Areas

Possible combination between the Far West and México theme areas. From the American West to colonial Mexico and the Mayan culture. It hosts the attractions Carousel, Stampida, Serpiente Emplumada, El Diablo-Tren de la Mina and Hurakan Condor, own restaurants, shows and drinks kiosks.

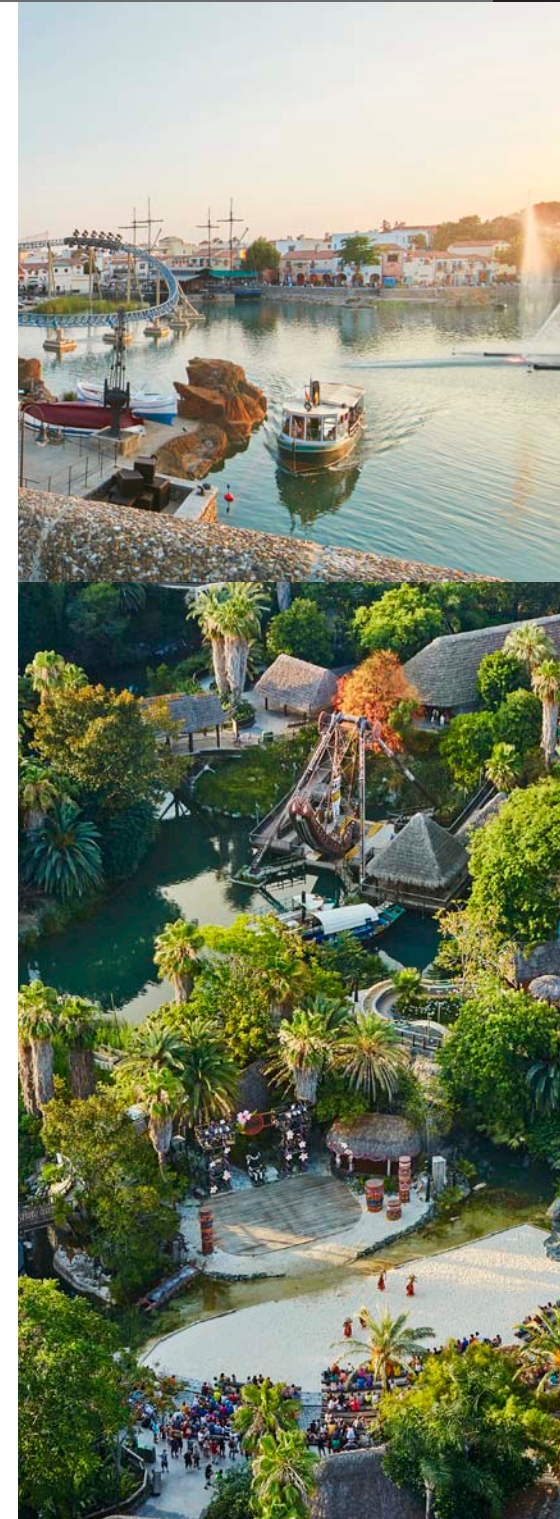


Opening of the Mediterrània Area

Recreation of a charming Mediterranean fishing village with the utmost attention to every detail with exact replicas and original features of picturesque towns on the Costa Brava and the Costa Daurada. It hosts the attraction Furius Baco, own restaurants, shows and drinks kiosks.

Opening of the México & China Areas

Possible combination between the México and China theme areas. From Mayan culture to ancient China. It hosts the attractions Shambhala, Serpiente Emplumada, El Diablo-Tren de la Mina, Hurakan Condor and Dragon Khan, own restaurants, shows and drinks kiosks.





5.5. Beach Club & Golf

The Beach Club offers a unique setting for each event. Facing the Mediterranean Sea, this facility has carefully landscaped surroundings and is a unique venue for any business meeting: indoor or outdoor spaces, 7 swimming pools and the exclusive Lumine restaurant.

Lumine Beach & Restaurante Lumine

The perfect spot for marvellous chill out parties or private functions with live music...and everything you could imagine situated in front of the Mediterranean Sea.

Lumine Beach will provide your event with an unbeatable setting where you can enjoy the utmost tranquillity and intimacy in authentic Mediterranean surroundings.

The facilities, with impeccable minimalist décor, quality materials and excellent Mediterranean ambience, offer incomparable and unique backdrops to your event with covered areas, rooms, terraces and open air spaces. You can enjoy fantastic swimming pools including one with a very special Infinity design where the edges turn into a horizon that becomes indistinguishable from the sea. There is another with sand and salt water, and also a heated pool. All of our swimming pools have been designed so that you can relax under the pine fronds of the Mediterranean.

Lumine Golf

LUMINE Golf is the perfect choice to organise events or activities in which golf plays the leading role. Equipped with 45 holes, its three golf courses -two of them designed by Greg Norman- provide the perfect balance between nature, challenge and fun. Whether you are a demanding expert or newcomer ... everyone can enjoy a unique golfing experience.



5.6. Teambuilding activities

PortAventura Business & Events offers the organisation of Teambuilding activities to encourage teamwork and promote leadership. Activities focus on the purpose of the event and can be customised with the company image in materials and contents, its products or its goals.

The main aims of this type of action is to:

- **Motivate** participants to successfully accomplish challenges and goals.
- **Strengthen** the feeling of belonging to the group in a playful, motivating and innovative environment.
- **Enjoy** the facilities of PortAventura World as intended by the organising company.

Activities have been developed with very different approaches such as gymkhanas (Mission Tarraco, photography, etc.), sports (company regattas, catamaran trips, company Olympics, etc.), themed (Live your own adventure or In search of Lost Treasure), group dynamics (The key to the Templo de Fuego, Chefs for a day or Ready for takeoff).

We also offer the opportunity for your activity to be presented or led by an elite ex-sportsperson or by an expert from the world of communications. Prestigious consultants to give lectures aimed at strengthening leadership, group dynamics, and teambuilding within the business environment whilst drawing on experience in the field of elite competitive sports.



5.7. Cirque du Soleil: a spectacular complement to any event

PortAventura Resort and Cirque du Soleil signed a 5-year partnership agreement, becoming the first European resort able to offer shows performed by the world's most successful theatre company.

This collaboration began with "Kooza" in 2014 and allowed PortAventura Resort to become the first resort in Europe to host a Cirque du Soleil show. More than 100,000 spectators were thrilled by "**Kooza**",

Amaluna. In 2015, to celebrate the 20th anniversary of the park, Cirque du Soleil premiered the show Amaluna.

Amaluna is a voyage to a mysterious island governed by goddesses and guided by the cycles of the moon. The show tells an epic, moving story of love that surrounds the audience with spectacular bursts of colour, music, lights, unique scenarios and characters.

Varekai, Tales of the Forest In 2017 after the great success of the last two shows, Cirque du Soleil presents the new show Varekai.

Deep within a forest, at the summit of a volcano, exists an extraordinary world - a world where something else is possible. A world called Varekai.

From the sky falls a solitary young man, and the story of Varekai begins. Parachuted into the shadows of a magical forest, a kaleidoscopic world populated by fantastical creatures, this young man sets off on an adventure both absurd and extraordinary. On this day at the edge of time, in this place of all possibilities, begins an inspired incantation to life rediscovered.



5.8. Ferrari Land, a new venue for special events

A new park located in the Resort, just minutes from the Convention Centre and our hotels.

This great addition allow us to offer more and better services which endow your events with an appeal which is exclusive and unique en Europe: open-air cocktails in the Via Italia

or a special dinner in an authentic Trattoria where you can taste the best dishes in Italian cuisine, as well as the possibility of enjoying an exclusive opening of the this park and organising teambuilding activities inside.

The spirit of Ferrari Land is a tribute to the excellence of Italian artistic heritage which has been embodied in its iconic buildings and, at the same time, it is a tribute to the genius Enzo Ferrari, who is represented in the iconic cars which are a symbol of speed, technology and innovation.

Ferrari Land has been designed to experience the genuine thrill of the Ferrari legend. The new park, with 70,000 square metres, offers 11 attractions and games with a large technological and adrenaline component. In addition, visitors are able to enjoy restaurants, shops and shows full of the spirit of Ferrari.



Everything you need

PortAventura Convention Centre brings together experience, knowledge and technology for the organisation of events at the highest level.

PortAventura Business & Events makes available to clients a series of technical, technological and event development solutions to create the event exactly how you imagined it to be. Highlights of these services include the Hostess Service, Technology (Cutting-edge technology and technical equipment), Floral decorations, Catering, Room Set-up, Stages, Branding and signage, Transfers, Wi-Fi and telecommunications, Resort services, Security, Photo and video, and anything else you can think of for any type of event.

Services

- Hostess service
- Technology: Cutting-edge technology and technical equipment
- Floral decorations
- Planning and creation of décor
- Branding and signage
- Transfers
- Wi-Fi and telecommunications
- Resort services
- Security
- Photo and video

Additional
services

PortAventura B&E



Large corporations appreciate quality and capacity

PortAventura B&E



Trusted by leading companies

To offer integral solutions for any event is the firm commitment undertaken by PortAventura Business & Events and one of the strategic pillars for positioning PortAventura World in the business tourism sector

Since its launch in October 2009, PortAventura Business and Events has hosted conventions, seminars, board meetings, sporting events and corporate incentives, on a national and international scale.

Over the years it has hosted events of various kinds, among which stands out for its international media coverage, the Rally RACC Catalunya-Costa Daurada 2, scoring round for the World Rally Championship that is held every year.

Major companies such as Torres, Hewlett Packard, Chupa Chups, Novartis, Unilever (Frigo), Privalia, Danone, Repsol, Black and Decker, Coca Cola, Orange, Lavazza, Numil Nutrición and Telefónica have selected PortAventura World to organise their business gatherings.

Not to mention other corporations and multi-nationals in various fields: Abbott Laboratories, BMW, Seat, Movitel Communications, Nespresso, Asisa, AUSAPE, Nestlé, Codorniu, Deloitte, Europcar, Opencor, Vodafone, Gas Natural, Adecco, Laboratorios Gebro, Eulen, Levi's, Basf, BBVA, Cadbury, Ericsson, Reckitt Benckiser, Price Waterhouse Cooper, Avenir Telecom, Citroën, HP and Dassault, among others.



L'ORÉAL



Deloitte.



SHARP

T·Systems



A commitment to social responsibility and the environment

Since its opening in 1995, PortAventura has developed a strong CSR strategy in the areas of human resources, environment and social programmes.

PortAventura World incorporates responsible and sustainable management based on our four corporate values: Commitment, Quality, Passion for the Customer and Team Spirit.

As a result of our **commitment to the natural environment that surrounds us**, PortAventura bases its activity on a management model that allows us to develop our business with maximum respect for the environment, above and beyond the requirements demanded by law.

Proof of this lies in the various environmental certifications of renowned prestige that we have been awarded, such as the European Certification EMAS, standard ISO 14001 and the Environmental Quality Management Standard. Indeed, in compliance with EMAS (Eco Management and Audit Scheme) -a Community eco-management and environmental audit system of voluntary application that allows companies to assess, improve and publicise their environmental responsibility - as well as design and lead the 'green' strategy,

PortAventura has, since 1997, been assisted by the Equip Verd Environmental Committee, a team of professionals working to help make the resort a benchmark for sustainable management.

PortAventura Convention Centre has prioritised and maximised, for the decoration of outdoor spaces, a wide variety of plants and flowers of native origin.

In PortAventura's hotels, among other socially responsible actions, stands out **energy-efficient lighting** throughout the premises, including more than 2000 rooms, minimisation of water consumption and waste generation.

Use of a centralised energy management system in the hotels, convention centre and park which optimises the use of lighting and air conditioning equipment.

Our F&B department prepares menus prioritising the use of **healthy and organic products**, as well as local and seasonal produce.

In the meeting rooms **recycled materials** - such as paper and pencils -, are used, as well as reusable items such as bottles and glasses. Recycling: Differentiation of wastes in all resort areas, which are then managed for recovery and treatment.

Port Aventura has spaces very close to each other within the resort, making it easy to transfer from one area to another on foot.

In this regard, we also recommend group transfers to reduce the number of vehicles used by attendees, and the consequent reduction of CO2 emissions into the atmosphere.

Economise on the use of printed material in favour of digital documents. Our Convention Centre has digital screens at the entrances

of each meeting room.

We encourage the delivery of materials on flash drives or sharing content via the web, avoiding mass printing of documents.

These measures together with raising the awareness of employees, customers, visitors and suppliers have led the PortAventura complex **to reduce waste generation by more than 6.5% in recent years.**

Our commitment to the environment



United Nations Global Compact

The UN Global Compact is an initiative that involves taking on an ethical commitment that integrates the 10 principles of conduct and action on Human Rights, Labour, Environment and Anti-Corruption into PortAventura's operations and strategies.



Environmental Quality Guarantee

In 2003, the Environmental Quality Management of the Environment and Housing Department of the Generalitat de Catalunya awarded PortAventura hotels the Environmental Quality Seal, a system for identifying products or services that meet certain eco-friendly specifications.



Environmental Policy

In PortAventura we take on our responsibility to the environment, as specified in our Environmental Policy.



Travelife Sustainability System

PortAventura has received recognition from the Travelife Sustainability System, a scheme that enables businesses to actively promote their environmental and overall sustainability efforts among the public.



EMAS (Eco Management and Audit Scheme)

In 2001 the EMAS (Eco Management and Audit Scheme), a Community eco-management and environmental audit system of voluntary application that allows companies to assess, improve and publicise their environmental responsibility was awarded.



Family Tourism Destination

This certification evaluates the commitment to quality and specialised care for families. This certificate also provides the added value of comfort and peace of mind so that customers feel at home and benefit from the quality entertainment and leisure on offer.



ISO 14001 Certification

In 2007, PortAventura was awarded ISO14001 certification, the reference standard for the implementation of a management system oriented to the continuous improvement of the company's environmental aspects.



In regard to the **catering services**, PortAventura attends to the needs of visitors with gluten intolerance are met and helps raise awareness about celiac disease.



A commitment to society

Within the PortAventura Foundation we work to make a difference to the lives of children and young people at risk of social exclusion.

We are a not-for-profit foundation that strives to achieve the integration into society of people belonging to groups at risk of social exclusion, especially children and young people. The PortAventura Foundation is the result of more than 15 years that PortAventura has dedicated to developing Corporate Social Responsibility in the areas of human resources, the environment and support for NGOs and hospitals.

Throughout its lifetime, PortAventura has strived to include disabled workers as part of its workforce. Furthermore, its concern for the environment has been constant, as reflected by

the impetus for the implementation of environmental management systems, landscape conservation and responsible management and exploitation of natural resources.

PortAventura is a brand associated with happiness and excitement and in keeping with this image has promoted various initiatives over the years to facilitate access to leisure for these groups: free entry for NGOs, support for blood donation campaigns, setting-up special services within its facilities for specific groups, or visits to hospitals by PortAventura's famous characters.

The objective of this initiative, as well as helping groups at risk of social exclusion, is to give professional status to the management of activities currently being developed and to implement, through the foundation, various projects within the surrounding region.

Responsible Events

To find, within a single space, an array of services of the highest level and that these qualities are combined with a **Corporate Responsibility policy**, has enabled PortAventura to gain the trust that many institutions and companies

have in our services for the organisation of their events of a socially responsible nature.

This is why AFANOC (Catalan Association of Family and Friends of Children affected by Cancer) chose PortAventura to hold an organised event for children and young people with cancer. This event, the Ill Down Catalunya, was fully organised onsite by the PortAventura Foundation and coordinated and managed by the PortAventura Business & Events team, under the patronage of the Invest for Children Foundation. In addition to this, TV3's Special Marathon Day was an event of particular interest as the proceeds from tickets sold went to fund research

into organ and tissue regeneration.

The first SHE Foundation charity day took place in 2013 in order to promote healthy lifestyles and raise funds for the "SI!" integral health programme. The SI! programme is taught in 98 schools in the country and aims to teach children and young people the skills and values necessary to act positively on their health throughout their lives. Attendees purchased special charity tickets for this day. The Children's Day was made possible with the collaboration of the PortAventura Foundation and Soñar Despierto Foundation with the aim of promoting coexistence among children, adolescents, foster families and volunteers, as well as

educating young people about the importance of volunteering, resulting in an unforgettable day of fun in the park.





Communications contact



Victoria Galván

victoria.galvan@portaventura.es

T. 977 77 92 06 - 660 05 78 72



www.portaventuraevents.com

